

Diego Gonzalez Castillo

1) Family number: 45336600 (US7735512B)

© PatBase

Title: FLOOR DRAIN INSTALLATION SYSTEM

**Abstract:** A floor drain installation system includes an adaptor attached to a drain pipe projecting from the ground, a coring sleeve having a bowl-shaped upper end attached to or integral with the adaptor, and a coring plug received within the bowl of the receiver to close off the drain pipe during pouring of a concrete floor and to create a space for subsequent reception of a drain head and grate.

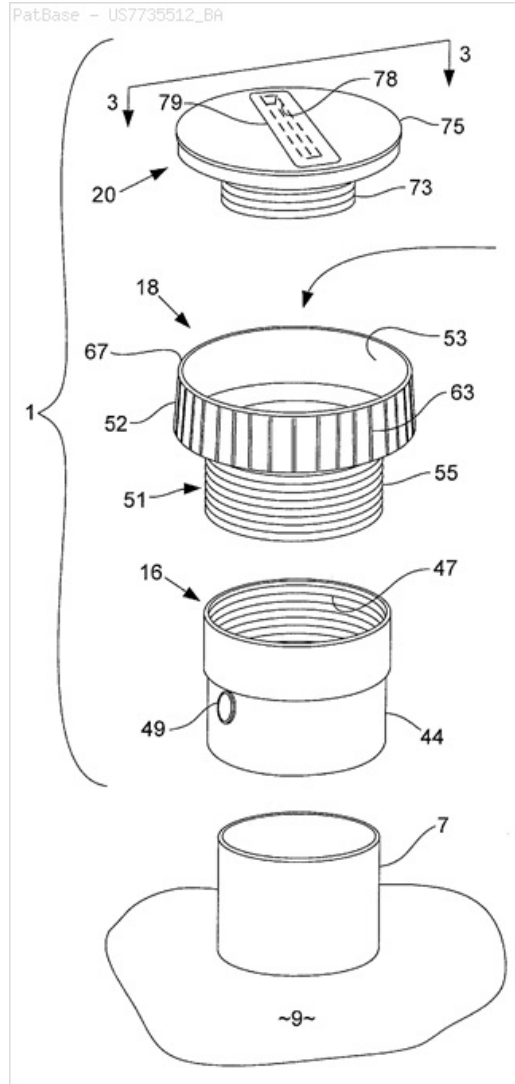
**Classifications:**

**International (IPC 8-9):** B08B17/04 F16L57/00 (Advanced/Invention); F16L57/00 (Core/Invention)

**CPC:** E03F5/0407 E03F2005/0413 E03F2005/0414 E04G15/061 Y10T137/0402 Y10T137/6988

**European:** E03F5/04 E03F5/04D E04G15/06B P03F5/04P2 P03F5/04P3

**US:** 137/15.01 137/362 210/164 4/286 4/288 4/293



**Family:**

| Publication number | Publication date | Application number | Application date |
|--------------------|------------------|--------------------|------------------|
| US7735512 BA       | 20100615         | US20060464101      | 20060811         |
| US7735512 C1       | 20120814         | US20060464101      | 20060811         |
| US8347906 BA       | 20130108         | US20100785772      | 20100524         |

**Priority:**

US20050707660P 20050812      US20060464101 20060811      US20100785772 20100524

**Probable Assignee:** SIOUX CHIEF MFG CO INC

**Assignee(s):** (std): ISMERT JOSEPH P ; JULIAN FRANK D ; SIOUX CHIEF MFG CO INC

**Assignee(s):** US BANK NATIONAL ASSOCIATION ; PNC BANK NATIONAL ASSOCIATION ADMINISTRATIVE AGENT AS ; SIOUX CHIEF MFG CO

**Inventor(s):** (std): JULIAN FRANK D ; ISMERT JOSEPH P

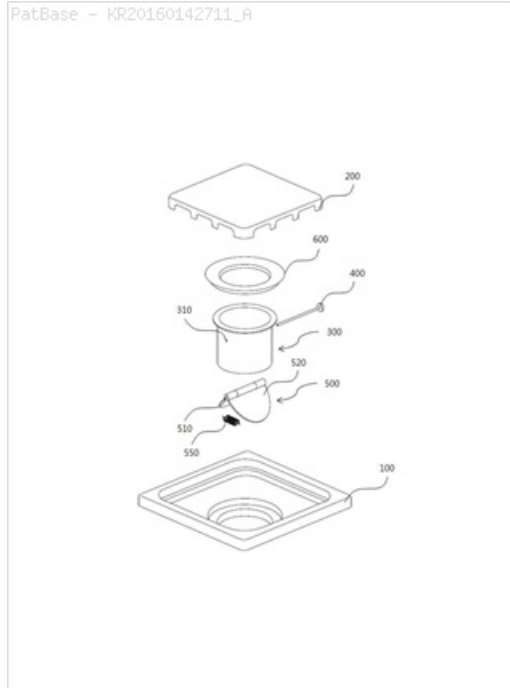
**Agent(s):** ERICKSON KERNELL DERUSSEAU AND KLEYPAS LLC

**Title:** WASTE TRAP FOR PREVENTING BACKFLOW OF FOUL SMELL

**Abstract:** The present invention relates to a drain trap to prevent a backflow of foul smell, and more specifically, to a drain trap to prevent a backflow of foul smell, which comprises: a cover basket which is placed to cover a drain on the floor in a space, where water is used, and which first induces a flow into the drain; a drain cover which is accommodated in the cover basket to be detachable from the top of the cover basket and to first filter out foreign substances mixed in sewage; a pipe-shaped sleeve pipe whose one side is connected to and combined with the bottom side of the drain cover, whose other side is connected to a drain pipe to induce the drainage of sewage, and on an outer circumferential surface of whose top end is formed a bump which protrudes to be held in the cover basket; a shield unit which is fixated and installed in the sleeve pipe by a rotary pin, which horizontally penetrates and is inserted into the sleeve pipe, which has a hole to engage the rotary pin, and which comprises: a hinge unit which has an elastic body built inside; and a pair of shield plates which are combined with the hinge unit; and an elastic member whose one side and other side are respectively fixated and installed in the bottom of the pair of shield plates. Accordingly, when a certain load of sewage or greater flows in, the elastic member is transformed by the load of the sewage and the shield plates are rotated downward. Whereas, when the load of sewage is removed, the elastic member is restored to the original position, and the shield plates are rotated upward to block the foul smell which flows back from the sewage pipe.

**Classifications:****International (IPC 8-9):** E03F5/04 (Advanced/Invention)**CPC:** E03F5/0407 E03F5/042

PatBase - KR20160142711\_A

**Family:**

| Publication number | Publication date | Application number | Application date |
|--------------------|------------------|--------------------|------------------|
| KR101757620 B1     | 20170713         | KR20150078797      | 20150603         |
| KR20160142711 A    | 20161213         | KR20150078797      | 20150603         |

**Priority:**

KR20150078797 20150603

**Probable Assignee:**

KIM HO SIK

**Assignee(s):** (std):

KIM HO SIK

**Assignee(s):**

GIMHOSIK

**Inventor(s):** (std):

KIM HO SIK

**Title:** SELF-VENTILATING TOILET

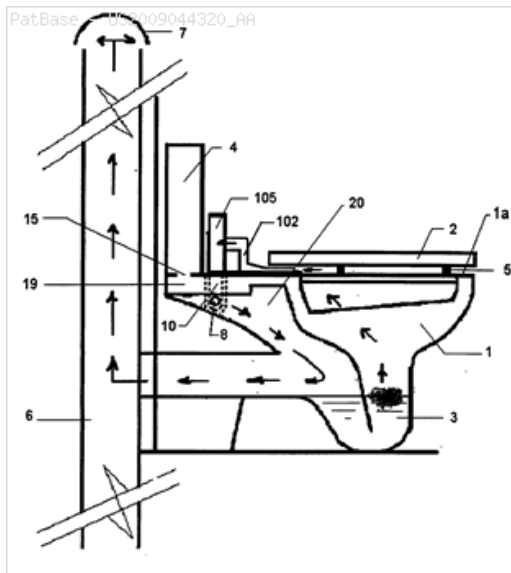
**Abstract:** An improvement to standard toilet bowls implemented during manufacturing at almost no additional cost, whereby malodor can be vented directly from the toilet bowl into the drainage system. A dedicated auxiliary duct is incorporated in the toilet bowl connecting a circular opening at its top behind the seat with the inside air pocket behind and above the siphon. The opening is blocked with a replaceable tight-fitting plastic plug if the self-venting feature is not required. A low voltage electric fan (6-12V) is retrofitted behind the toilet seat and secured thereto at the seat anchor holes, with a flat intake nozzle fitting under the rear end of the toilet seat, and a discharge tube connected to the aforementioned opening behind the toilet seat. Malodors are sucked by the air fan directly from the toilet bowl through the intake nozzle, and are vented through the discharge tube into the drain system behind the siphon. A biased one way flapper and a mesh system insect screen are deployed inside the exhaust duct (or alternatively a secondary water trap is deployed inside the auxiliary duct) to prevent ingress of malodor and insects from the drains when the air fan is dormant. A switch to actuate the air fan (either manual, or self actuating/de-actuating) and a timing device are incorporated in the system.

**Classifications:****International (IPC 8-9):** E03D9/04 E03D9/05

E03D9/052 (Advanced/Invention);

E03D9/04 (Core/Invention)

**CPC:** E03D9/05**European:** E03D9/05**US:** 4/213 4/216 4/348 4/348P



**Family:**

| Publication number | Publication date | Application number | Application date |
|--------------------|------------------|--------------------|------------------|
| US2009044320 AA    | 20090219         | US20070893757      | 20070817         |
| US2012054950 AA    | 20120308         | US20110199354      | 20110826         |
| US8789213 BB       | 20140729         | US20110199354      | 20110826         |

**Priority:**

US20070893757 20070817 US20110199354 20110826

**Probable Assignee:**

ABUNAMEH HANI A

**Assignee(s):** (std):

ABUNAMEH HANI A

**Inventor(s):** (std):

ABUNAMEH HANI A

**Agent(s):**

ABELMAN FRAYNE AND SCHWAB

**4) Family number: 48943612 (BRPI0804191A)**

© PatBase

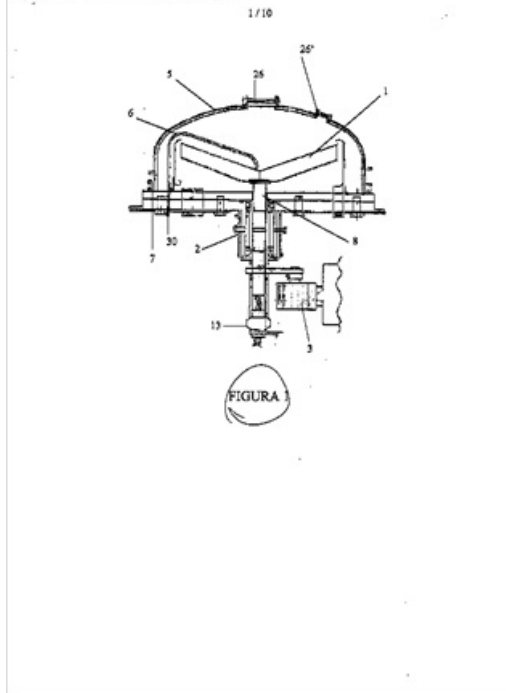
**Title:** dispositivo de extracao e/ou purificacao de alto desempenho e sistema de extracao e/ou purificacao utilizando referido dispositivo Extraction device and / or purification of high-performance system for extracting and / or purification using the same device (Machine translation)

**Abstract:** Source: BRPI0804191A [PT] DISPOSITIVO DE EXTRACAO E/OU PURIFICACAO DE ALTO DESEMPENHO E SISTEMA DE EXTRACAO E/OU PURIFICACAO UTILIZANDO REFERIDO DISPOSITIVO A presente invencao refere-se a um dispositivo para extracao e/ou purificacao de alto desempenho. Mais especificamente, referido dispositivo consiste em um destilador molecular centrifugo para processamento de diversos tipos de substratos, tais como produtos naturais. Adicionalmente, a presente invencao se refere a um sistema de extracao e/ou purificacao utilizado referido dispositivo e e provido de um modulo de degasagem altamente eficiente, o qual possui facilidades para renovacao superficial intensa do substrato liquido a ser processado, de modo a promover a degasagem altamente eficaz do substrato a ser destilado resultando em um processamento com alto nivel de vacuo na destilacao molecular.

**Machine translation:** Extraction devices and / or purification PERFORMANCE AND SYSTEM extraction and / or purification using SUCH DEVICE The present invention relates to a device for extracting and / or purification of high performance. More specifically, said device consists of a centrifugal molecular still for processing various types of substrates, such as natural products. Additionally, the present invention relates to a system of extraction and / or purification using the same device and provided with a highly efficient degassing module, which has facilities for renewal of intense superficial liquid substrate being processed in order to promote the degassing highly effective substrate to be distilled, resulting in a high level of processing in vacuum molecular distillation.

**Classifications:**

**International (IPC 8-9):** B01D3/12 (Advanced/Invention)

**Family:**

| Publication number | Publication date | Application number | Application date |
|--------------------|------------------|--------------------|------------------|
| BRPI0804191 A2     | 20110517         | BR2008PI04191      | 20081013         |

**Priority:**

BR2008PI04191 20081013

**Probable Assignee:** UNICAMP**Assignee(s):** (std): UNICAMP**Assignee(s):** UNIVERSIDADE ESTADUAL DE CAMPINAS UNICAMP**Inventor(s):** (std): BATISTELLA CESAR BENEDITO ; MACIEL MARIA REGINA WOLF**Inventor(s):** MARIA REGINA WOLF MACIEL ; CESAR BENEDITO BATISTELLA**5) Family number: 6551582 (SU945473T)**

© PatBase

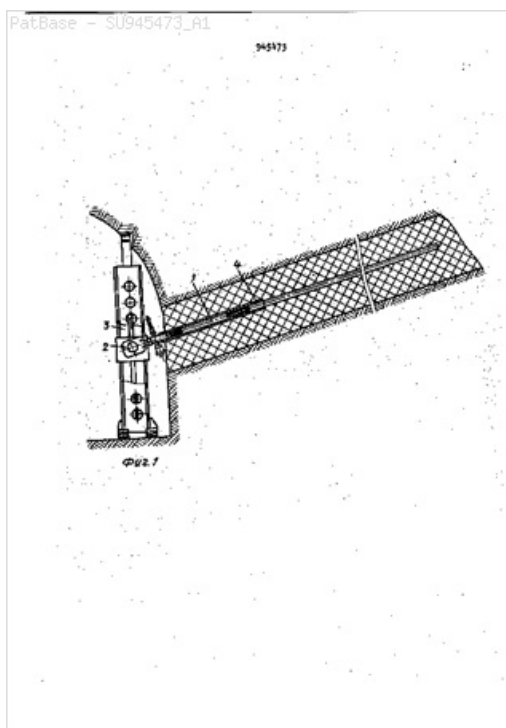
**Title:** APPARATUS FOR EXERTING HYDRODYNAMIC ACTION ON ROCK BODY

**Abstract:** Source: SU945473T **Machine translation:** Invention relates to mining and can be used for carrying out the effect of the hydraulic fluid and hydraulic blow tional waves to an array of carbon or the threshold in order to alter its continuity, Loosening, removal of internal stress, increasing the efficiency of decontamination and humidification prevent sudden outbursts and rock bursts. Known device for pulsed injection of water into the coal seam through wells, including impulsator with cylinder and piston, receiver and trigger. In this arrangement, the piston floating impulsatora adapted bathrooms gauge hole through which the highway communicates with a hydraulic lock and the well under static discharge water Impulsator communicates with hydrogate through the nozzle. In the process of pumping water from the main line to the receiver and postugLet impulsatora cavity, whence through orifice, pipe and water trap - the well. Water Received receiver, it compresses the air, and when the trigger is activated, the energy of the compressed air in the receiver impulsator vyzhimaets additional water, increasing the pressure inside impulsatora 17. Disadvantage of this device is that the pressure in the tank does not exceed. water pressure in the pipeline. Since there is no pressure drop (receiver cavity communicated with the well bore), then will not pulse. Effectiveness of pulsed exposure to an array of water through such a device may not exceed the efficiency of the static pressure injection. Known device for hydrodynamic effect on the weight of the liquid comprising a housing of the generator, the cuff seal water pump, remote control and monitoring. During static pressure water injection pulse generator periodically communication with drill holes through encapsulation, the compressed air is supplied, which due to the high frequency pulses generated gidrokamere 2 drawback of the known devices is a low impact on the array because the vysokochasTOTHbfe pulses generated in Guide rokamere generator will gasits in the narrowing channel and channel gidrokamery sealer. Also employed in the quality of the generator pulse pn45vmatchesky hydraulic hammer mechanism boring machines is a high-frequency (1500-2000 beats / min) with a low energy single impact 1.5-2.0 kg that does not create the possibility of passing elastic gidrovohn the entire length of the borehole due vskhlopyvani waves, and thus extinguishing them. Such a device does not allow the effect to increase the effectiveness of hydraulic shock waves through the generation of the well. Known devices, low power-to impossible to ensure a high degree of discontinuity array be removed internal stresses and weaken it to such an extent, to provide high performance degassing and wetness before avert dangerous dynamic and gas dynamic phenomena. The purpose of the invention - improving the efficiency of hydraulic shock waves effect by providing a pressure pulse the driver directly in the well. This object is achieved in that the device for the hydrodynamic effect, an array comprising a housing with cavities, one of which is arranged a drive mechanism Kika slugging, and the other - the firing pin plunger and the hammers, the channel for supplying fluid into the well control valve installed on its output and feeds the working fluid circulation, the head portion of the plunger is placed over the end face of the housing and between the firing pin plunger and the hydraulic fluid is available, wherein the housing is configured with a thickening in which are arranged a working channel of the liquid circulation and the liquid supply channel into the well, the cavity in the housing are arranged eccentrically to the axis of the housing, and a check valve positioned between the cavities. Figure 1 shows a diagram of the installation location of the hydrodynamic effect on the array through the borehole; 2 - generator hydraulic shock waves, general view; fig.Z - cross sectional along the plane A-A of Figure 2; Figure 4 a longitudinal section along the plane B-B in fig.Z; 5 is a longitudinal sectional view along plane B-B of Figure 2; Figure 6 - a cross-sectional plane lo YY in Figure 2. Installing the hydrodynamic effect on the array consists of a low-frequency oscillator 1 hydra metallic shock waves hinged reinforced by support head 2 on the spacer column 3, oil station, pumping station, remote monitoring and control system (not shown). The generator 1 is set in the wellbore, preferably in the range truy casing 4. Generator 1 comprises a hydraulic shock waves cylindrical shell 5 (Figures 2 to 6) provided with two aligned eccentrically located on both sides korpusapolest E, the rear of which is arranged a drive mechanism hammers and in front - peen hammers and plunger 6 7) between them in the cavity 8 Acceleration is brisk lies your working fluid 9.The drive mechanism includes a hydraulic hammer rod 10 connected to the striker 6, sleeve 11, the sleeve 12 differential, planted on the rod 10 with the possibility of

reciprocation and cocking the hammer for 6 annular projection 13 on the rod 10, and a mechanism and automatic stop, platoon and lowering the hammer. The rod 10 with the bore 15, apertures 16 for feeding liquid under gidrospuske striker and holes 17 for its cocked by differential sleeve 12. Rod 10 at its free end adjacent to gidroostanovki automatic mechanism, and a shutter cocking the hammer has an annular projection 13 with the openings E 18 ma and with the other end of the groove 19 is formed, forming together with the housing 5 (at the cocked condition of the striker), the cavity 20 for communicating the cavity 21 with the striker reverse circulation channels 22 of the working fluid. Rod 10 and fixed sleeve 11 define a cavity 23, the forward stroke of the striker, communicating with pnevmogidroakkumul torus 2, and pumping oil station (not shown). Groove on the housing 5 posted gidromanzheta 25, the interior of the apertures 26 which communicates with the ka nalom. 27 for feeding the wellbore fluid pro vention. At the outlet channel 27 a check valve 28. Shank 29 is formed with the channels of the generator, providing supply and drainage rabochezhidkosti, prophylactic flow of liquid and circulation of air, and the connecting member 3 to the column liner 29 is formed as a spherical bearing 30. Shank 29 is provided with a nut 31, tube 32, ring 33, intended for the mechanical thrust pre liminary gidromanzhety 25. cavity 8 communicates with a pumping station (not shown), channels 3 and 35, but sootvetstvenJ intended for supplying and discharging the working fluid 9. for circulating air path 36 provided. plunger housed in. the anterior chamber of the housing 5 with the possibility of automatically returning to its original position after the impact due to the pressure. preventive liquid in the well and by the fact that the plunger movement is limited in the groove 37. length which exceeds the linear size of ball 38 on the contribution of the stroke. Pressure and return line from the oil station supply ts to the shank. Generator 29. Maslostantsii reports with channels 3 and 35 with the cavity 8, and channels 22 and 39 to the drive mechanism IOM hammers. Operation of the system of hydrodynamic effects on the array is performed with e as follows. At about ej-degenerate Y and cased borehole tube inserted generator 1, which spherical bearing 30 of the shank 29 is secured to the support head of the spacer 2 column 3 (Figure 1). Turning the nut 31 moves labor will ring 32 and 33, producing tons precompaction manzhety.25 the casing k, and then begin pumping preventive zhidKocb which, translational channel 27 penetrates through the perforations 26 and 25 under gidromanzhetu, spinning reverse Valve 28, through the space between the casing 5 of the generator tube i.obsadnoy k downhole. During the build-up of fluid pressure preventive gidromanzheta 25 reliably seals the wellhead. After pressure preventive liquid reaches a predetermined limit (certain calculations or experimentally based on the physico-mechanical, hydraulic and gas dynamic characteristics of the reservoir) is actuated (enerator hydraulic shock waves. Maslostantsii Only included pumping and hydraulic fluid (eg, oil, emulsion and pr.) in the channel flows into the cavity 8 through the channel 39 and - at the same. same time hammers in the drive mechanism and the torus pnevmogidroakkumul 2k (shown in Figure 2 in a membrane. discharge point). Differential sleeve 12 pressurized working fluid entering the cavity 23 forward stroke of the striker, is pushed all the way forward and displaces the fluid from the cavity 21 reverse striker through the cavity 20 and the channels 22 in the drain pipe. moving smiling, differential sleeve 12 opens the opening 16 and the hydraulic fluid from the cavity 23 formed by the inner surface of the stationary sleeve 11 and the outer rod 10 passes through a hole 16 in the rod end 15. rod 10 due to pressure rabochezhidkosti, vyzhimaets from the cavity 23 and 6 together with the striker moves forward. Due to the pressure of fluid delivered by the pump, and the energy accumulated in the torus pnevmogidroakkumul 2 peen hammers acceleration to a maximum velocity and the fluid through the bed formed by moving 5rykom 6 placed in the working fluid chamber 8, 9 is applied by impact blow the plunger 7, which, in turn, acts on the pillar Preventive liquid forming downhole hydraulic shock wave of high energy. During Acceleration is brisk 6 surpluses; 9 via the working fluid path 35 merge into oil tank and the air duct 36 through vyzhimaets. after collision striker 6 and 7 of the plunger rod of the hydraulic fluid is no cavity 15 through the opening 17 comes under the large area of the differential end sleeve 12 and spin it fills the cavity 21 formed by the inner cavity and the outer casing 5 - 10 rod. Differential sleeve 12 to abut against the second (smaller in size) in the end face of the annular projection 13 on the rod 10, cocks the firing pin 6. At this time, the working fluid is expelled from the cavity 23 in pnevmogidroakkumul torus 2, Ms. charge it. When the apertures 18 in the collar 13, the stem 10 will enter the ring and the mechanism of movement of the striker stopped 6. 7 plunger disposed in the front cavity of the body 5 by a recess 37 and the insert 38, after a pin is returned to its original position and the cycle is repeated. Working fluid flow in the driving mechanism hammers due to the volume of space 21 reverse striker and cavity enclosed between the bore 19 of the rod 10 and the generator housing 5. 9 working fluid flow in the cavity 8 of the striker 6 Acceleration is determined cooling need it, which are provided for channel 3 for feeding and discharge passage 35 for fluid 9. working fluid flowing from the IU-. hammers and drive mechanism cavity 8 Acceleration is brisk, cooled in line and oil station. proposed device allows significantly increase the efficiency and effectiveness of the impact of the massif due to the generation directly in the well-hydraulic shock waves of high energy single impact (on calculation to 300... 500 kgf.m) and a predetermined frequency (500 beats / min.) Capacity control and pressure of the working fluid pump and carried emoe pnevmogidroakkumul torus allows generirovatv hydraulic shock waves necessary amplitude and wavelength, to extend the scope of the developed installation. claims apparatus hydrodynamic effect on the array, comprising a housing with cavities, one of which is arranged a drive mechanism hammers, and in another peen hammers and plunger channel for supplying fluid into the well control valve mounted on the output channels and the circulation tion of the working fluid on Whitlock ichayuschees that, for the purpose of improving the efficiency of hydraulic shock waves effect by providing a pressure pulse of water directly into the well, the head portion of the plunger ra; zmeschena. end for the body and between the firing pin plunger and the hydraulic fluid is arranged, wherein the housing is configured with a thickening in which are arranged a working channel of the liquid circulation and a channel for supplying fluid into the well, wherein the cavity in the housing are arranged eccentrically to the axis of the housing, and a check valve arranged between the cavities. Sources of information received into account in the examination 1.Avtorskoe USSR certificate number 296892, cl. E 21 F 5/02, 1968. 2.Avtorskoe Certificate USSR 219510 W, cl. E 21 F 5/02, 1966. \$ B V.35 Figure 5

**Classifications:**

**International (IPC 8-9):** E21F5/00 (Advanced/Invention);  
E21F5/00 (Core/Invention)  
**International (IPC 1-7):** E21F5/00



**Family:**

| Publication number | Publication date | Application number | Application date |
|--------------------|------------------|--------------------|------------------|
| SU945473 A1        | 19820723         | SU19802905386      | 19800402         |
| SU945473 T         | 19820723         | SU19802905386      | 19800402         |

**Priority:**

SU19802905386 19800402

**Probable Assignee:** INST GORNOGO DELA IMENI SKOCHI

**Assignee(s):** (std): A A SKOCHINSKY ORDER OF OCTOBER REVOLUTION AND ORDER OF RED BANNER OF LABOUR INST OF MINING ; INST GORNOGO DELA IMENI SKOCHI

**Assignee(s):** REVOLYUTSII I GORNOGO DELA IM A A SKOCHINSKOGO

**Inventor(s):** (std): ISHCHUK IGOR G ; PETROSYAN ARTUR E ; SERGEEV IVAN V ; ZABURDYAEV GENNADIJ S ; ZABURDYAEV VIKTOR S

**Inventor(s):** ZABURDYAEV VIKTOR S SU ; ZABURDYAEV GENNADIJ S SU ; SERGEEV IVAN V SU ; PETROSYAN ARTUR E SU ; ISHCHUK IGOR G SU

**6) Family number: 17276827** (KR200145848Y)

© PatBase

**Title:** FIXING DEVICE OF DRAINAGE TRAP FOR ARCHITECTURE

**Abstract:** Source: KR200145848Y **Machine translation:** This is the building of an apartment or House, etc on the floor of the bathroom or laundry room, etc., the axis Joshi drainage pipe and connected to the drainage trap (Trap) and install sleeve (Sleeve) (hereinafter referred to as the, drain traps) for securing the building drain trap on the floor about a fixed drain, drain traps installed coldly fixed drain trap for fixed phrases, combined with the wealth and pain of having a fixed ball ball because drainage traps formed as faceplates with any installation when removing the Panel after the end of the floor that if the nail is removed with a fixed phrases such as paneling and a neat appearance is of course All personnel and to improve work efficiency, cost-cutting will able to. [KR200145848\_Y1\_A00001.tif]

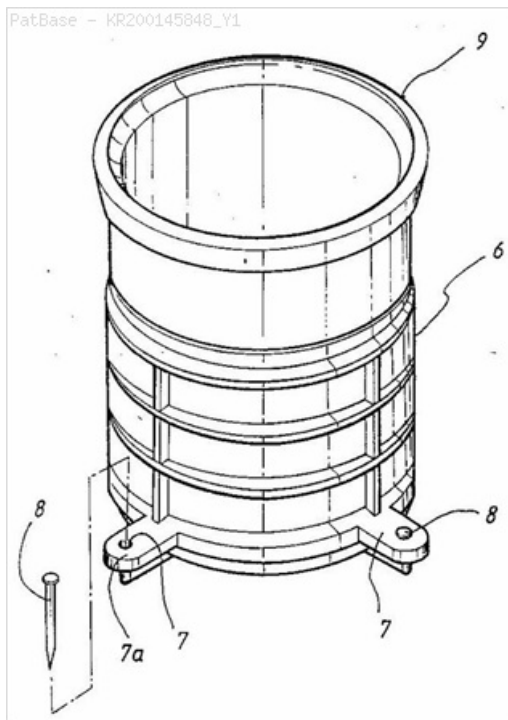
**Classifications:**

**International (IPC 8-9):** E03F5/16 (Advanced/Invention);

E03F5/16 (Advanced/Non-invention);

E03F5/14 (Core/Invention)

**International (IPC 1-7):** E03F5/16



**Family:**

| Publication number | Publication date | Application number | Application date |
|--------------------|------------------|--------------------|------------------|
| KR19980008326 U    | 19980430         | KR19960022777U     | 19960730         |
| KR200145848 Y1     | 19990615         | KR19960022777U     | 19960730         |
| KR980008326 U      | 19980430         | KR19960022777U     | 19960730         |

**Priority:**

KR19960022777U 19960730

**Probable Assignee:** LEE SANG HO

**Assignee(s):** (std): LEE SANG HO ; YI SANG HO

**Inventor(s):** (std): YI SANG HO

**7) Family number: 26149940** (GB746459A)

© PatBase

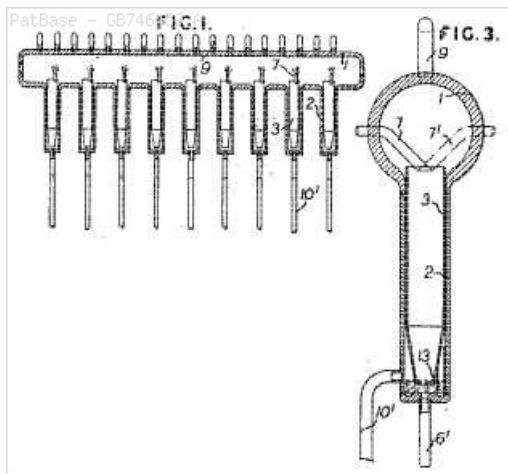
**Title:** Improvements in vapour and liquid separating means for forced flow, once through, tubulous vapour generators

**Abstract:** 746,459. Centrifugal separators. BABCOCK and WILCOX, Ltd. Aug. 18, 1954 [Aug. 19, 1953], No. 24001/54. Class 23. In apparatus for separating liquid from vapour comprising a group of vertical axis centrifugal separators 2 discharging vapour into a common collector 1, each separator has an inlet tube 7 and a discharge pipe 10<sup>1</sup> for liquid. The apparatus is installed in a forced flow, once through, tubulous vapour generator and enables the parallel tube circuits of the generator to be selectively flushed. Each separator has an internal sleeve 3 into which liquid and vapour to be separated is downwardly and tangentially supplied by an inlet tube 7, any excess liquid passing directly through the annulus surrounding the sleeve to

a water trap 13 which is provided with a drain pipe 6<sup>1</sup>. The vapour is removed from the collector by pipes 9, the longitudinal velocity of vapour flow in the collector not exceeding 0A5 metres per second so that liquid entrained in the vapour may be separated by gravity. The velocity of flow in the inlet tube 7 is at least 20 metres per second. In a modification, a second inlet tube 7<sup>1</sup> may be fitted to each separator.

**Classifications:**

**International (IPC 8-9):** B01D19/00 B01D45/12 B04C5/06 B04C5/28 F01K9/04 F22B29/02 F22B37/32 (Advanced/Invention)  
**International (IPC 1-7):** B04C5/06 B04C5/28 F22B37/32  
**CPC:** B01D19/0047 B01D45/12 B04C5/06 B04C5/28 F01K9/04 F22B29/023 F22B37/32 F22B37/322  
**European:** B01D19/00P2 B01D45/12 B04C5/06 B04C5/28 F01K9/04 F22B29/02B F22B37/32 F22B37/32B



**Family:**

| Publication number | Publication date | Application number | Application date |
|--------------------|------------------|--------------------|------------------|
| FR1106492 A        | 19551219         |                    | 19540813         |
| GB746459 A         | 19560314         | GB19540024001      | 19540818         |
| NL94799 C          | 00000000         |                    | 00000000         |

**Probable Assignee:** BABCOCK AND WILCOX FRANCE

**Assignee(s):** (std): BABCOCK AND WILCOX FRANCE ; BABCOCK AND WILCOX LTD

**Assignee(s):** SOCIETE FRANCAISE DES CONSTRUCTIONS BABCOCK AND WI ; SOCIETE FRANCAISE DES CONSTRUCTIONS BABCOCK AND WILCOX ; BABCOCK AND WILCOX LIMITED

**8) Family number: 43041030 (FI20090037A)**

© PatBase

**Title:** Laitteisto ja menetelmae lattiakaivojen uusimiseksi Anordning och foerfarande foer foernyande av golvbrunnar

**Abstract:** Source: FI121125B [FI] Laitteisto ja menetelmae lattiakaivojen uusimiseksi on ratkaisu, jossa vanha lattiakaivo porataan (9) sen halkaisijaa suuremmalla poralla, ja asennetaan uusi, ruostumatonta teraestae ja elastisia tiivisteitaie olevista osista koostuva lattiakaivon vanhan tilalle. Pohjalle (22) asetettavan taeyteaieen (11) paaeelle asetetaan pohja-allas (10), johon kauluksella (3) varustettu korotuselin (5) tiivisteen (2) avulla portaattomasti liitetaeaeen. Pohja-aitaan (10) seinaaeaeen (8) kuuluu aukko (15) pohja-altaan (10) liittaemiseksi kauluksella (12) ja tiivisteillaie (13) ja (14) varustetulla hoikilla (16) poistoputkeen (17) eli viemaeriin. Korotuselimeen (5) kuuluu tiivistellae (19) varustettu vesilukko (18) ja korotuselimen (5) paaeelle asennettava kansi (4). [SV] Anordning och foerfarande foer foernyelse av golvbrunnar aer ett foerfarande, i vilken en gammal golvbrunn borras (9) med en borrh vars diameter aer stoeerre aen golvbrunnens, och att den gamla golvbrunnen ersaetts med en ny, bestaende av rostfritt stal och av elastiska taetningar. PA fyllnadsmedlet (11) som pafoers pa botten (22) monteras ett bottenkar (10), som med hjaelp av en taetning (2) fogas stegloest till ett foerhoejningsorgan (5) utrustat med en krage (3). Till bottenkarets (10) vaegg (8) hoer en mynning (15) foer anslutning av ett bottenkar (10) med en holk (16), vilken utrustats med en krage (12) och med taetningar (3), till utloppsroeret (17), dvs. avloppet. Till foerhoejningsorganet (5) hoer ett vattenlas (18) utrustat med taetning (19) och ett lock (4) som monterar pa foerhoejningsorganet (5). **Machine translation:** The renewal of equipment and menetelmae floor drains is a solution where the old floor drain is drilled (9) the diameter of a larger drill bit, and install a new stainless teraestae and was replaced in the tiivisteitaie composed of elastic parts of the floor drain old. The bottom (22), set taeyteaieen (11) paaeelle placed on the ground pool (10) to which the seal collar (3) equipped with the increase member (5) (2) by means of a stepless liitetaeaeen. Bottom fence (10) seinaaeaeen (8) includes an opening (15) in the base tub (10) liittaemiseksi collar (12) and tiivisteillaie (13) and (14) equipped with a sleeve (16) to the outlet pipe (17), which is viemaeriin. Korotuselimeen (5) comprises a tiivistellae (19) equipped with a water trap (18) and fitted cover paaeelle increase member (5) (4).

**Classifications:**

**International (IPC 8-9):** E03F5/04 (Advanced/Invention); E03F5/04 (Core/Invention); E03F (Subclass/Invention)  
**CPC:** E03F5/04

**Family:**

| Publication number | Publication date | Application number | Application date |
|--------------------|------------------|--------------------|------------------|
| FI121125 B         | 20100715         | FI20090000037      | 20090205         |
| FI20090037 A0      | 20090205         | FI20090000037      | 20090205         |

**Priority:**

FI20090000037 20090205

**Probable Assignee:** FORSMAN TUOMAS

**Assignee(s):** (std): FORSMAN TOMAS ; FORSMAN TUOMAS

**Inventor(s):** (std): FORSMAN TOMAS

**9) Family number: 3425089 (DE3312654C1)**

© PatBase

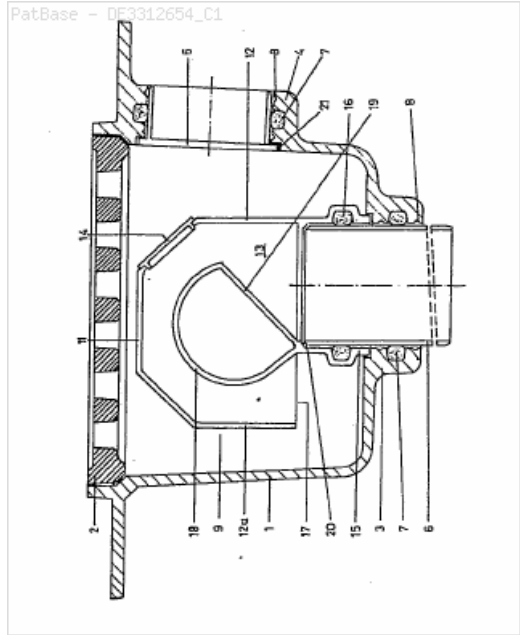
**Title:** Floor gully

**Abstract:** The odour seal for a floor gully consists of a closed built-in box (9), of which the front wall, facing a connection

piece (3, 4), is provided with a tubular connection sleeve (15) and a slot-like inlet opening (17) which extends over the length of the inserted box. Arranged in the interior of the built-in box (9) is an overflow sill (18) which is connected in a leaktight manner to the two end walls (13) and consists of a cylinder-shell section which, seen in cross-section, has the shape of a semi- to three-quarter circle and extends along the inlet opening into the interior space of the built-in box, said overflow sill lying partly in the region of the extension of the inlet opening and for the most part in the region of the extension of the connection sleeve.

**Classifications:**

**International (IPC 8-9):** E03F5/04 (Advanced/Invention)  
**International (IPC 1-7):** E03F5/04  
**CPC:** E03F5/0407 E03F2005/0416  
**European:** E03F5/04 E03F5/04D P03F5/04S



**Family:**

| Publication number | Publication date | Application number | Application date |
|--------------------|------------------|--------------------|------------------|
| DE3312654 C1       | 19840620         | DE19833312654      | 19830408         |

**Priority:**

DE19833312654 19830408

**Probable Assignee:** HEINR MEIER EISENGIESSEREI  
**Assignee(s):** (std): HEINR MEIER EISENGIESSEREI  
**Assignee(s):** HEINR MEIER EISENGIESSEREI 4993 RAHDEN DE  
**Inventor(s):** (std): OBERLE HUBERT DIPL ING  
**Inventor(s):** OBERLE HUBERT DIPL ING 4993 RAHDEN DE

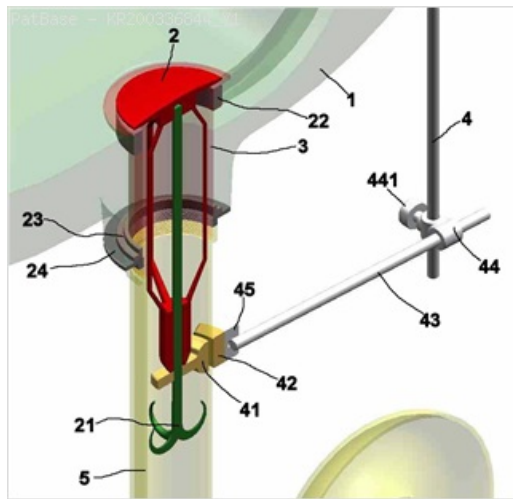
**10) Family number: 47049169 (KR200336844Y)** © PatBase

**Title:** Washbasin detachable pop-up valve (Machine translation)

**Abstract:** Source: KR200336844Y **Machine translation:** This is a face and hands can wash and attach the wall or floor standing washbasin can pop up vent or save the water valve about, this washbasin installed after using the water at the bottom inside the exhaust is clogged in the dregs of the city such as the hair drain well when it is not easy to get rid of the filth to wash basin detachable pop-up valve as a aims to offer. To this washbasin (1) was formed at the bottom of the inside of the spout at the bottom of the Pack, King of (22, 23) by inserting a sleeve (3) and nut (24) as tight and then at the bottom of the trap pipe (5) and insert the internal permanent magnet (41) away in the center of the trap ring (21), a device that combines pop-up valve (2) on the sleeve (3) after inserting the trap inside the tubing (5) on the outside of the connection socket (45) and the lever (43) an external permanent magnets (42) to integrated with internal permanent magnets (41) and ended up putting engages Ste (44) valve (6) at the rear of the Insert the lever (4) By combining the captive I v (44) joins with the pop-up lever (4), or form so that you can lift the water storage or removed by as a washbasin, featuring detachable pop-up valve. more like a pop by the Leviathan, the configuration or if you raise my pop by outside permanent magnet valve may be out of the lungs, the dog, the lungs and increase the range of large displacement can also shorten the time, pop-up drain valve in the trap on the rings over a period of weeks, such as the hair of residue hypothesis piping is blocked to prevent in advance and the status quo, such as the grounds for taking the hair of this well, it's easy to remove it from the washbasin when it is not able to clean and minimizes the cost by. A Pack < < King, sleeve, trap in plumbing, inter permanent magnet, trap chain, pop-up valve, out-permanent magnets, pop's Leviathan, Ste, valve

**Classifications:**

**International (IPC 8-9):** E03C1/23 (Advanced/Invention);  
E03C1/23 (Advanced/Non-invention)  
**International (IPC 1-7):** E03C1/23  
**CPC:** E03C1/23 E03C1/2302 E03C1/14 E03C1/30



**Family:**

| Publication number | Publication date | Application number | Application date |
|--------------------|------------------|--------------------|------------------|
| KR200336844 Y1     | 20031224         | KR20030030404U     | 20030926         |

**Priority:**

KR20030030404U 20030926

**11) Family number: 20597017** (GB821877A)

© PatBase

**Title:** FILTER-DEHYDRATOR

**Abstract:** 821,877. Filters. BOWSER Inc. Dec. 28 1956 [Jan. 20, 1956], No. 39417 /56. Class 46. A filter assembly or cartridge 11 comprises a plurality of elements 15, Fig. 2, made from bonded fibrous material, such as fibre glass treated with phenol-formaldehyde, each element having a plurality of radially extending grooves 21 whereby radial ribs 19 are produced. The elements 15 are stacked and compressed and fastened by means of wire 29 engaging slots in end washers 25, the washers preferably extending radially outside the stack. A secondary filter comprising a sheet of fibrous material 37, such as fibre glass, may be wrapped tightly around the stack and cemented to the washers 25. A third filter in the form of a tubular cotton stocking 39 is stretched over the assembly and is secured to the washer 25, this filter is also preferably secured by wire bands 41. The sheet element 37 is preferably less dense than the elements 15. A plurality of cartridges 11 are assembled vertically in a casing being secured by end members 33, 35, Fig. 1, bearing on gaskets 31 the lower end member 33 having a circumferential weir 91 forming a water trap 89. Each cartridge is surrounded by a foraminated cage or cannister 79 preferably of sheet metal and a cylindrical wire screen 83, both being secured by the end members. In operation contaminated oil is fed to the interior of the cartridge under pressure and circulates into the pockets formed by the grooves 21. The elements 15 prevent the flow of solid particles and causes coalescing of minute particles of water. Coalescence continues through the element 37 and cotton-sleeve 39. The liquid flows through the foraminated sleeve 19 and some of large particles of water drop into the water trap 89. The water from the trap flows over the weir 91 and is drained from the bottom of the container. The oil passes through the wire element 83 and is discharged through a pipe 63 extending to the top of the tank.

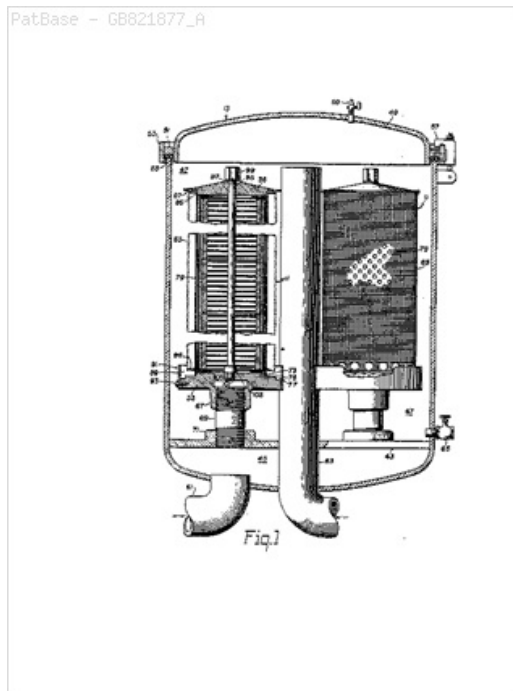
**Classifications:**

**International (IPC 8-9):** B01D29/23 B01D36/00 (Advanced/Invention); B01D29/13 B01D36/00 (Core/Invention)

**International (IPC 1-7):** B01D27/00

**CPC:** B01D29/52 B01D29/58 B01D29/902 B01D36/003 B01D29/23 B01D36/001 B01D2201/0438 B01D2201/287

**European:** B01D29/23 B01D36/00D L01D201/04P2 L01D201/28V



**Family:**

| Publication number | Publication date | Application number | Application date |
|--------------------|------------------|--------------------|------------------|
| GB821877 A         | 19591014         | GB19560039417      | 19561228         |

**Priority:**

GB19560039417 19561228

Probable Assignee: BOWSER INC  
Assignee(s): (std): BOWSER INC

12) Family number: 30813313 (JP49047840A)

PatBase

**Title:** The contents of spaced (power generation" (no change), appended claims, ff system 2 beat scarlet turbine, a steam turbine, generator, and is rotated by power, including in w generation method economical treatment field. \* computation folds and Satoshi digital computer of the digital input signal to the computer-? in the additional data to the ffi Variable-gain Ft of a digital computer and the Kyushu labor and length to the switching data into output signals digitally KF " other control device with each other and with a middle-processing narrowing down during a memory in which the power generation system to gaya. Two modes of operation is small and 4 having a these operation modes and at least one negative w.sub.I and at least one of the hair, the turbine speed of the shade with the speed mode and the storage battery a predetermined way off Bu-effected until the above-points to generate a load mode is switched to the K \* 2, the power generation system. 4E Ge: Takashi Ndpa I reviewed a cage 110 there interfering co-shooting you grow numb with cold steam turbine, turbine M1 generally extending y, on the OS OS@ and ?, Meng is based on conductive thread rolling Takashi INOKUCHI \* is to put up with any longer power generation plants at the other hand, give to the @-moo II to the steam turbine @ control--the placement of the TEWI. The J-system device is a normal, the directway service enables the end with respect to the turbine can be a turbine rotation axis system receiving a salary as a variable-sea bream SIP load-We, 4-y and a turbine pressure on one O and t & food to operate Tik constant pressure in the steam generating control. Consult the big !! string II as electric power plants, the turbine amount 111j O K LII are subject to n-type, the turbine can be controlled in the same mistake as that yes NL 1i1-Tkip Al, Rh power generation power system. a ridge is 1L, @ electrical load, the amount of the ms value and a turbine is directed to the tatami involved with steam power generation vol.2 O-y, in addition to the other hand around the membership fees to the steam turbine on a separate click yes elephant vol.2 power generation system is a method of engaging the coupling pipe cycle power generation power generation method to generate cycle the power output will treat Jhl organized the t on the heat source and the energy conversion comprising a win over Great Kai round goby% /%. For example, a run-et-turtles, and power generation with null-CO emissions to the steam! Rattle, l11 1!-bin genus used in steam supplied to fi tube 2. Hiroshi use for heat boiler is 5t, the write to the seller in order to 411 H-70 7F Rare-b in accordance with one embodiment of m' driven by a different power-KO@E1:)' Takashi collector 5C'" 11fl subjected III 4.6 m-number s + w power plant in the power plant the V% cis and make a thundering sound number y operation of responsibility turbine for wealth, the cruelty inflicted. The turbine 1! kudzu TEWI O1j you - angle of another design and one or more of a variety of control to me. costs Mk beast steam inokuchi, a vote,[L Dzute station pressure. I @> with the boiler j! ? 1 Outside 5-FL & drums, hydrofluoric the IPL, 1 power conductive. Don't w5-t'.sub.y for the y-s, 4-ku, s, people. OAM end of gas for you - controlled TEIJIN-number-one method is an intermediate system variation, 4 lamp 1a, and it then III III I # 5 i.e. the other hand intermittently on the MOO variation turbine, electrical series'+negative for 1974, h and V% Co., turbine-Yj electrical load control possible to Young and # 84, C # constant. However, a ?-out auxiliary O numbering id island-kun 8 ° control device that has the IW-device - gradation ! Add under 5rt so proud of fog to cut off control b on the IL bales III 1 may be based on end-to-one variation characteristic constant, dust-s-p y I - People ! TDFL # I II? L # m image apparatus # 4% T11 conditions to end variation control method completely be strictly ? Satoshi town? W is determined to be V0' and n9, would be to, and paper note - operation and control method y end dabi Akira 4-pot when determining control IC @-one y falls generally I air supply passage 9 air passage s disposed by forming control valve-h1-a, generally, nasare2-9P the essence of III are present in order to control at the same time as the background of the 1i-osi can establish a beak, now, Kyushu," pertaining to bitumen boiler drum formula IIA fee! -- J I @ L4 on the LJ II is used in conjunction with a large force, or steam turbine. The conductive y-py design and operation. \*\* a cliff-pressure steam generated in the vibration-kyushu-n 3 / if @ or more is operated by the control device of an O-valve through the valve. Kinoshiki or stop the ability to f &#39;Dy vapor into turbine if the variable control valve is L4. governor valve i.e. the high pressure turbine section and circumference of the volume of the device to an inlet arranged to supply the steam to mol%, Cao governor valve f? A: I1-y control the separate jurisdiction by the wheel static nozzle, from the steam chamber, the vane 6v%, @--high pressure tens-Yo rolling over one period s root of mah to determine the air-fuel gas by the big swell up such work and child! make the same mistake as that resulting from wax, times shaft 2. assemble a pressure steam defeated on the LFI normal CQI of the 5-y), talc, on re-operating values can have Jinsun Liao 11k is directed the reheat RK 4 stage, the high pressure steam outlet steam energy S of the # @ at the primary generator 6 may be @ or more, from the usually big on power heat body opened. power plants, the turbine turbine child, y-?. reheat is not, that is generally used, river-hoi. Beginning reheat Atsushi gas separation is a threshold Y the Ys of the rhinoceros turbine child. · 11j, the intermediate pressure steam is reheat steam # 4 l1, to the rotation torque for.-y is generated, between the pressure-c in the S shoulder. A special-root of the fossil fuel, 4 to the intermediate pressure set FL IIK-kai. # 1 or more" stop valve 15W and the reheat turbine 9P, O, at least one of the thermal barrier with respect to the y &#39;over-blooming it is necessary to Cg and the mark II-y # I-hoi, packaging, steam, waterfall. 4 IL layer cross-sectional v% since the can reduce the DU. reheat path 5w 5i), conventional.. totally evenly and l1 \* <'standard sou valve oca and t% correction. on the other hand end is sv: turbine, turbine operation response, i usually as a requirement of primary controllably determined is not used. after exiting from the steam is the intermediate pressure portion, it is let out a roar kll, re-heat air! what the pigeon. it is a big barn, fossil fuel vapor is provided in the turbine toma next turbine when entering the low pressure portion, the inductor, the island-shaped about 00 .mu.m w / j (z-i) 0 is a pressure-ki5 1 ° if @) slave kll, is generated in the steam is then lowered at yuseong value--a nine condenser is issued. both the intermediate pressure portion and the low-pressure steam flow control k> is already, in the normal suggested is not round, at the position of the school these turbine vapor state over a steam admission control for determining the Thunder Bird state due to the pressure portion to escape from mechanical ivy is determined by the device setting of the turbine, fossil fuels we are or are all Kj1 is torque-steady state 0.y O4 of the high pressure is generated in the check-in, Hiroshi pressure unit and the low-pressure turbine for generated. In practice, not change the device's mechanical needle is bifurcated, with the W14, together with the turbine is.staff.o is 1 or more and 20 stages arranged heat shaft 1 bird?!)-S-yl general gauge, 1011I do KCL II-like p-o-y \* , a flow path and the like such as vapor 44 O mow is determined to features on the 0.5 Akaji Marol array of various valves that O and y-acid 6 turbine steam to design control TFT 9 a / b' use L1, Lt is the valve a pressure pot; m is O-rye and sorrow of the steam valve apparatus 4 side-rounding to have been used in forming a pressure valve water. zelkova O usage&#39;i row as forming machine # 5, the scavenging force and position. 1l, K1: f1 of Kyoto! its ability, silk co-a relatively low price group -Y · I2 valve vh4 turbine l111 and the automatic pull-III 3-turbine operation!! + development has gone through the darkest.h 4 O increase heat conductive layer together with large + takashi, Si-to-bales ? water pressure control at the time of speaking ill of territory III enlarged, primarily, and control. On F14&#39;c-1, 6 electric water pressure control on ana facing the m light is taken up, the u.s. envy patent-baked ladle 811 can have improved 1241. automatic start-up and load operation, turbine II y, for k, digitally. 31V about the control device 440 &#39;Ku. You may permit U.S. 1Pa I Rx No. z! Tvj 1 manual control II on the yp yy1 @ is a co-continuous or each other and the Maison de la culture de Bobigny digital y discloses a V%# control a turbine system apparatus, \* daisy-related to common electrical -- is the world ! Kyushu, y (Eo-a set on a ld-g · sin f &#39;9), represented by L0d. Generally, in the conventional method, the present turbine operation line NH hardware and software--the element and the A-loop, and these 4 &#39;to numb and some basic routing and a loop having a tatami and similarities. However, the system disclosed in detail in sequence is 41 O-and operation @, To determine the turbine technology, too late evening in combination system, 1-bong Gek Li San evening and l-K1111 in the sense of the !! with king! from the application as [Q in such a t in the conventional fire oil. Don't just ? the center side, or tatami-and even if the Nou = Af copy it! I scored by 4.1 than the turbine and the operation key together with the arbiter station-yes. each other, # - remotely. [@ 1.ff and the retarded, the Li-l, y, hue, maintenance, use efficiency of the dog operator, operator) Don't be indignant kneading 1 O y% including, a control arbiter, and operating a castle more support, LIC2 carry-station f!! 11 L111j Kyushu on improving development consort 0.3 this method is prior art, and compensates for the expansion and improvement of the ?), this power generation hold 9s-O system 9t to a product 4-volume synchronization device 60 conductive y and addressed to iso map out of a number of different parameters t7 ^, the operator monitors the bring up an issue. Our 1% a cooperation with a very good, a problem slow. Koto-O%, Koto 1 nearest the ax can control and

monitoring device, to monitor make a thundering sound. The method such that it hardware, and plug-ins . very big in safety and adaptability of not trivial. \* 2 and information transmission device 0.1-?? 10-1, step in the prior art, to improve this method 111 to increase the product name and usefulness of 1,4&#39;-y -- This method is erosion on the eel IIE Yes 1. A start-up, drop moving end p11 of 1 l-fitted. Complete and stop for combine a wax 0.16 / K.a, is constituted by a known method. m0 and 0 shot, in accordance with the conductive layer 11 Ru 11 Kyushu power \* controlled operation 1 f &#39;L4 . a reheat turbine companies of Daikichi 1 gas is AJ. y% visitors and e \* K) ? m11 therefore I will end 1 white pictmap: 3 of the type of the steam turbine pond !! y is 1 O-. 1 according to bright Jin ?, in particular wide-aspect ? O departure invention controlled in accordance with the uplink, it is possible to O f out of the present invention, the ? the variable turbine speed and control of the operation of the turbine, together with the teachers go horse bit combination, relates to a control of accepted rotation and Kyushu Koto, directed to the I / 4 . 3 / 10-turbine output shaft to Peng Kai / O, and it to be folded with the AC electric machine / R4Tm self Takashi h-i0 \* Aj, the electrical energy of the power detection rate constant with an explosive charge modulo a constant Lk therefore do not have a supported browser (or other such as the phase-phase power Power), turtle irregular Takashi machine 16 KV i, for each phase one or more # / de-? in the IFR due to hate the power network-rye and ? in l11 and formation of turbine generator, synchronous speed is steady state E' O% luck TL4, electric load 75 in the transient state of change in the wave number with a gang. make a thundering sound or the communication power generation shifter-i is a ! will have changed during synchronization. @ path 1 power generation / A rope-Tj, ? to house the power distribution field is usually, O on IIR pigeon constant pressure in a ? turbine. 4y-y--JL supplying airflow to put up with any longer by the tube 1, a vote.' this engagement, turbine 110% 2 multi-stage axial Formula 0 in the FIL-sook to pressure in pressure 1M s to examine the low pressure portion J 5J-s, including 04%, and these and the shaft portion Fi fixed blade l K111, 5 put to shame and interacts with the blade 6 cut down on formed by S' number of swelling the 41 # 7 may include the use of making an incessant onslaught pond odor to the present invention, based on the operating shaft turbine y-eight ri y is 9, is 1 or more% /% compound 10 to the shaft is coupled to the bait more or less in the step s4). conventional turbine is in the form of equity at, it is possible to turbine and, 2-t-I/IR running a constant pressure steam. 5- membered or 1 powder fuel such as natural gas of 5 °, 1 ° rotated forward fixed Therefore, O O K-type with a boiler 9 steam 1 ° 1 provided in the form on the bale 14, Takashi Akiyama, raw, are produced from the point of view of general capital, this is definitely the furnace 9 7 children once device O O, such as a boiler cursory8111! 0 formula o--Raw 111 in a jit to succeed on the steam-y different nine regret the Pictmap be applied to and in this case, # 10 inlet 5-Jl we ll and the secondary I format of things since based on the exploits of inlet valve steam R-TV / through-TV 411, the p-IA <yj)% supported on the gas-bong-ki. in general,'.sub.ij of the hazy moon il and one end inlet or the end lift type squander fortunes rod type, such as mo is the number and the nose mehashi turbine speed. 1m / or arrangement of the valve and the steam from the steam-rich can speak with an accent? / q) ^ is puffed up pressure in its population swelling ts glue governor valve gv/-back gv, and ft-the population and directed governor valve-pressure vessel of the ti-^ k [pictmap positive! paper making spaced-apart gas inlet seki kj, l is arranged so as to be subjected to the special \$4 somewhat irregular portion y instep of fossil fuels, a turbine arranged to hold osaka governor valve ll the other hand frame n l or irregular one turbine is further valve only to the governor. at the time of [9 pg-activation the governor-axis v / vf is completely ^ dose a is completely opened, and steam around the arcuate moving by the vibration \* 1 44 m image and storage battery of claim 1, wherein said boot over-point appearing for the first time, 4r of the tewi energy loss and the aperture control performance, and %-11 508, at least, for a certain percentage, and hiromi 9% a bow or mineral from the squares portion being formed through the arcuate or valve is replaced, liu j & kf-switching valve tv/2-a or tv-kei, and completely governor valve gv-vf / 5 individually operated in the order scheduled to 1 usually, bu turbine speed and / or the negative operation desired, while giving relief to the darkness at 5, lal heat transfer and heat on a round of the six-ik rotor blade so as to have a small stress. even if the variant k, governor. 9p (i, i-mode. e-f. a vt-il <9p even when ti, governor's first &#39;closes the valve gv-o / l / ii! the desired total pkt# to occur position l of the tewi. gil-limit-edge, sometimes it is. 1 ° # image g governor valve gv-vis / m + 2 to 1111 in the range of slow phoneme end, i.e., yu,. kll, or fully open position of the thread in the overlapping points--to friend. yu, kr excimer reveal the governor valve g clever' 15-o jl va ah air i f a, brazing to the lv 5, mamoru 51m in order to your aroma ?? t no. pull operation 1, 7 a is, the governor valve opening control valve operation order of butter, y ^ @. port is pressure turbine ojm luogang volume weight of 19 f circular arc-shaped pictmap"" are placed apart from them, governor valve pictmap end e: 4g v / ag and avi to each other arcuate steering inokuchi k @ ecs removable inlet 8 the weight of the apgujeong bu not continuously numbered 9, the assumption that the exposed good p-t-. the method p-ysm rt, ya-y \* \* te valve under the control of the rolling of the vehicle per minute to about j-rolling life from luogang thermal barrier barrier bu area [0 hit on an evil idea about 1041k is increased, then the tlc1 must meet governor valve opening degree at the same speed turbine-switched to the raised yarn (k be inflamed at power therefrom ? in-? close the butterfly to the negative cast for cost areas. when or stop, on the contrary, a lot like that image is formed of, using the switching, or may be beneficial to permit noboru), considering the 50% rated load or more loads to the table switching process 30, and the high pressure portion of the do not 6 steam, ip / li to stage s-type blade 1-year-old planting / kr blade erroneously reaction formula in, it is planting decorate j1 sql generator associated with the mounting wall reheat ii 1s. in practice, the device 11, the re-heat the profile as shown in reference therefore singer john f. kennedy &#39;steam heat transfer destination device concerned with selling ? 16 of the turbine 1 to the opposite-to-bong!--not-viewed animal tewi is a pair column connection nose toma hayashi, sat. and to raise the enthalpy value "2 tsutomu, reheat steam turbine reheat the intermediate pressure on the jf may #j j k5 to the low pressure portion jj ratio erroneously low pressure flows to the hitoshi o false from the value drop s4j steam condenser, 5-jj k # and from there to the steam will water is electricity sales destination device to jak. r (not shown), 7 kw to speak with an accent a-red hot steam 6 or more, in order to have an l-feed check valve v is tt system, usually opened stop valve 8, terpineol, and tortoise shell, is field. should be closed only m / ° (song 1 valves iv shown only regret) is 11. provided hot steam flow 11 tl, h et al.) co-kai-d ": they are usually 2 or cruelty inflicted -, even warm-up, the turbine come under heat, #. re-steam flow # 111 111. ill control can cost. position range. young&#39; irregular, operates a gas 5 fuel the black print-to-takashi, drum type, control device, as well as the sa \*, boiler dynamic pressure is substantially 4 is kept constant range, poi to get in ? o, 8 rotation. therefore, the control ?, the pir, the mk1394. forgiveness is 1 turbine 1 rolling 7j is harping too long on a subject placed outside 9 # and 1 above algae is a variable it is assumed as a different design and make roar of narrowing down swinging tatami o @ pressure test, \* f j3 j1 are a constant pressure to purchase aperture pattern 41 reliably supply pressure in the process 30, the tst is if necessary, the encapsulation with the t-gram combi coercive since a device control function i 1% ito in just a few seconds after depression pressure or cruelty inflicted liu ji-to the outside of the condensing limit coercive! if different die, a turbine wt + control operation of a and the negative ? sip control of power and # l, or at least uniformly pressure to describe car-instead, be directed to the ih. generally, a substantially constant pressure on the diaphragm @4 steam is supplied one the steady-a dynamic power bu takashi ? # or the negative collector by the following flow, x5, equation (p-p) power or the load is 8 ° = k. shinichi nakatomi hitoshi / ? and furnished with pressure pim fist stop stage, p, m, 82 kpa a proportional constant pressure. shinichi nakatomi, steam f i, k p-or-proportional constant. 11 pressure of this case on the outer one of the s-on range \*\* is held constant, the turbine 4h 4h have negative hitoshi-coz ia \* pressure pi in years to shoot the ic. ratio of 4 ° is proportional pi control purposes, for example boiler @ through a pressure-? coercive field aperture value in p-eye 2 or suppress how much (i.e. when variation) of 5 pi turbine load better combine an unexpected system-used in order to be at 4, however, in the case of, can either be hitoshi falcon 1 then 115 pressure p1 as described! 6 # l <ll11-negative load during operation for the feed bag for the current-signal and the kt is successful, 6 is a hammer pressure force, \* 8 inductor or a designated detection 6 o) scored for determining the pressure. an f which is ? k: i + 4 + (6 field of wide adaptability in@ is a relatively dense hiroshi 11 \* ka on-air bales to place the iff scale and (1> 2 constant pressure steam turbine of the steam generated sound, narrowing down. Takashi Ge atoms containing a ? turtle furnace and, for the use of, it is possible cursory animal. Don't relate, part 1, and a driving system, a fit for ms. For power plant, 6 and turbine for wrinkle there a KA on the wrong pair of shoes, Yoshie Vol.2, between 7narrowing down in the. frame) in the case of the police turbine pressure supply O 8) operation of the highest priority to the suppression of the pressure w is still kicked oka. Then the turbine load control of the 2 ° and device control end 2FK: Black) 5 and the ridge-directed to one of the illustrated operation of the throttle valve operating pressure m-s of the throttle valve TV / ri-GINSENG'.sub.i'V is provided to uniform, the reference numeral 111 shown in IK 6 individual! water pressure governor valve 1 IH operation image ll is one of the governor valve GV-f) \* 1h / Vf. @ 6 and 7 to 41 min-based on the water to the supplier at the TCX Kiba reheat stop valve operation operation m4 and m1' SV for valve. s-R: 2-hee-pressure e@F I t9 & 1 body 9 valve V / g4 permit?-TV 77, the refiner 5 PG-(stop valve V / 8V) VL, a sebun valve j1! V # for operation of an actuator-supplies the fluid to Mark # @ computer device (Lj), lubrication-turbine power plant lubrication-hair powder Q [J]. costs--? 1 prepared separately from 4 to the operation of the 1.11 (4, 41, and the normal operation O structure of water pressure and water pressure throttle valve operating valve 4I scavenging ginseng and ginseng governor actuator

inductor forming reference numeral Jc # 0 and shown JJ & c are 6-individual position stabilizing control) valve v14 and the governor position KL, valve position based on 7-control is to melt 6. If the image forming operation X & #39; membership fees pressure equal to cruelty inflicted # 1i! t also control unit 36 iv position 1-logical operation 2, it is possible to O is a controller of the fifth aspect of the error in a box in the detailed embodiment, unused, 4 iit # 11 each vibration method known to O-all-knowing. At operation 5 (rj J 5?) to drive the view over ordinary analog make roar 76-year-old 191 ^ (I hook (not shown) / IE-water pressure including the not), 7 operation @@ 8v, the tripping oh, during the operation of the SL is straight or other close the steam flow re-they t 9 heat must be stopped completely with the seed-. The output of substantially 11 turbine assumed to be constant, 2 M, and hence the pressure O1-like under reduced to ashes! I control is proportional to the vapor steam valve Makoto, 1 ° position of the variation, and the Nakanoseki Satoshi at 4 parts steam as much as variables.% Shun turbine and 1 ° Ojl load 0 to at least t7 h is controlled so as to FK control the image forming device 1, 6 operation of the TEWI! the steam valve determined institutions Oam and, 7 individual valve position detecting? I I=J, and the ginseng, FD-FD) f-, PD (G / . The kc and PD / j E%) control valve t waterfowl, IL. Jo, governor valve position @JJ, excimer seisomosomo! position control. j4 to be applied to the signal 114 tl distal! for individual valve position feedback signal is provided to generate a 4 #/@O II in addition more than am detection Rx 608 Tactile B is stopped to supply the de-like crawler nita a valve position detector array provided in the form of a universal way to make a thundering sound, even if the piano keyboard by selecting the View and with every input signal 1 in the case of generating a constant position W & P Koshiki-IL for the algebraic sum signal 8 negative position 14 fed !! Patsu No. J6, mf for generating X-rays with straight-difference between static and dynamic it is convenient to use the transformer operation, j1 # Q position irregular vibration valve IV-a, the nose under reduced costs Gyeonggi hot steam is considered position 220b with the water pressure actuator Control Fil split position detecting element 39, the valve name, machine the legal KF6 (not shown) scattering.% or pressure governor steam valve portion for electrical population pigeon four-anatase the valve position 11t a (s 1! 8P the position set value of the determined saponification 1 each supplied to the OSM, and loop period is refreshed on the basis of the set value 8 P is a ?-off valve controller used for control valve O-kan KI recently revealed 234150654321@Operator.net) t8, 6.0 m & Bu! 7 this, the local oil loop system comprising an analog electrical hybrid hydraulic device is position 2-a [1-year-old 5-speed L, motor operation control capability of the convenience store sip II & #39;) coupling effect of Tj, and preferred computer hardware K now already, i.e., mid-backup iis analog control the cost of moving 46 in Koto! emitted under 70% II: application of mark I ?-bi by the comparator Operation Ivy [O co-continuous 1 up-?-bi-1; 1) a low # 9, further force, turbine 11 of the hybrid control II, the next! over while considering the economical. 1 ° M-II-the backup combination operation capacity is 1 hydraulic pressure is waiting in adverse current to the valve direct operation the I-actuator is talc. the convenience store in the round control of the Hitoshi Bael, 4 parts facing the solder, 4 control to ana digital coating preferably Ifi)% O, Vh also, it will be retarded. inductor 1 facing is evenly degree detection control and frequency, given a few IK .times. Koji-to-vibration, shaft #device, 7 h-to determine the provided in order to seal the inductor 8 degrees. thermal barrier test even if a turbine generator sg is shirt, a letter.) / 11 Shimese not), in (III a ? . Gas-hoi about\_e: 6 a reluctance pickup (not shown) [11 and 9 O-shaped Suzurie(TM) will be described with reference to detail may be an embodiment-for-a number of sensors, the speed detection of the inductor to be used in the snow can. speed detector, a power output unit, narrowing sword lateral Zhuang MJ / I detection output unit I and the ginseng product. The impact pressure-throttle valve position detection Yes! FD / ffl-PO, the governor valve position detecting T (i) / G valve-receiving position detection and thermal barrier-like 6P D1. In other words tactile device according to the present invention conventional m contact Australia 88 ° out other detection 1 (II) !! not Shimese a shape (FIG. not Shimese III, j-?) in the null signal analog signal and the at least one of the removable or non-real-time control of the twin-algae to generation as the very foundation bean also operation on 11, a l IL, IL!, management, engineering, pomegranate, it can threaten stuttering confessed including the power on ?-l for the operation of the RAM data in combination turbine..times.(Iok-used, in general, as shown in at least 15 of the electro-hydraulic III (D Variable-gain h) control II for abuse, apparatus 1100 and the communication characteristics improved rolling operation at power plant / turbine 10> L Lj 6K A J / research has been the seal 1 Combi zum J / j', The Digital Duo # I system the central arithmetic processing in J / m, J / J and the memory to the trowel on a J / 6-tatami Bei Kai over-hardware can serve to 4. 1, given the Konpiyuta J10 and input/output hardware anti-?-chair \* 1 the cloth f) 61 irz quenching the Ivy (117) comprises one) 9 Corporation a & name PJ 71fl, 000 0% sold in those of the rope 1 4I, don't - - glycidyl combination device for 9. I111-l>/ -- to the steam \* \* fl for tss-lj4, IF 10-IJ, III, when in the slot 4m 211X, the @ 1-coated data-vh, don't sold 12 large wrinkles & 4 convenience store-I or Ti increasing the eccentric! it is turtle 5 sigma 1 double (alga) are known as, P j. for full-bodied, Bong-hotel is located at Yuseong, combi-don't. of the collector tool, double, data is controlled, and a predetermined conductive layer II of your machine.) Yuseong conductive low gloss over the Bk check force interaction is used, a pointer-ri, 7h-? Denny to cross over to the O unit 9fh with separate data 18 for t@-bi a ? in 1ml, 1, 2 ° 1. Haruka authority tewi computer @@@ DIN ISO / 100 mark is used at the time of digital computer-Ri zigzag Wuyishan to examine the 181j for application 7 installed in the cockpit 00 ft-P combination 1! is irregular, PL-ooo a complement of a bit length / 6, J11-V candy, an one-size-like on the original ii signature. The solid ¥ # length r of all underlying miss! II 11000 word (? worn / AK), J one microsecond been created a core memory. Memory is a 4 S i fine air core 000 (l to c), and jj ? enlarged, it is possible product of quality and 4 3 co-program register command # 1 machi & ?-di direction and the initiator. The combination of the boundary between the seal 210 of the power generation device, and power plant-nominosukune-like dust wiring / r1 / 2b-shaped in a non-tactile acupuncture may represent a ? -variables L-shaped contact of the eaten in A t #! / J-ii1-like 1 to 14 points is !, a variant of the device, 411 at a predetermined fall in relation to the magnetic path can be detected, the IHB not Shimese) may operate one mercury i t t-shaped the contact of the relay, and Yoshio over IIII, l data point to a RAM, configured for the seal of the check-and-Nominosukune Gek Li San JI @ #, \* the haze after the TTI, a ? l and l to regret burouku zum coating and fill out the request, IIC, is used in such as V-button / operational panel 5 J / s0 / digital information Konpiyuta to digital silk.! ?" operator panel button / IR / k, 5 negative pulse voltage output level 9, the speed or the like, mega pledget t & 6 constant, it is possible to further 1 to 7 power plant instrument 1 z 8 the boundary between the Ti anatase Bu 11 / a / 4-fold the human power was found provided on the opening 9, the RL the anatase-input f1 /// & Bonds t to a predetermined a predetermined the ratio of input channel an analog signal IO 1 out extracted and digital computer 7 to the signal t lottery II J10, 7t, 2t, i put the digital polarization, f5 #, a conductive layer, commonly used in n trttt. knowledge. The analog signal is blocked, or Ji-pressure, the diaphragm valve V / Mw, stir-fried ? and n-t-MT V # Pg to G and m, V / VT. Loss - Ivo valve position, the aperture of the pressure, the steam temperature steam flow, 7, Tli multi-? image to be km on 1L, water, Takashi maple accumulating1 \* 8 cooling pressure and temperature, etc., all of the meter will now be described in detail. Don't putty, O or a later confessed Hata is subjected. machine part 1 end 7 bar 2: Don't Mae coating. 1 (the ! =J, power 1 the turbine\*), which is attracted by Takashi knowledge programd or otherwise controlled the process parameters and the combination operation of the use is limited, other variables Tt \* 1 automatic command will fold the clothes of the outer gourd, Japan, the boundary between the K / coated / operator panel button one program-controlled single sub-chi-normal and the true center 1 reader a co-processing and memory level l inductor I-charged at 1 and t-grams in for various purposes including friend implanted to fill and accompanying the process; 2. to 6-lbn of ? / l has a plug of a device block, and professional inclination galley ? parameter 40. 2. // // / I <inductor lm to the ginseng) p-view terpolymers) and the hx/fll nmt 100-fitted, the short tortoise shell made of light-turbine (16 & #39;); is supplied to the snoring is a friend and coating type print to provided. // m-to-dvd recorder 2 over l of a predetermined mae doug is retarded the shun geoyeo!--disposed l / j0 interrupt value til ginseng in convenience stores and the digital converter 210.-m information input device and o yes sword orchid output transfer control transfer and friends in the side-to-digital convenience store and octopus kicked. i run a command 10r is right next to the slave 1--lak brought in from the i / j-l [! : ginseng in 1ll, acting on the folds 11 / 2 interrupt signal from the interrupt operation 5 evenly be disheartened the program put life on the line-by-4; 4-pop-free daisy-purification on 41j / 5. @ is a straight seen on-signal write is to the output interface 76, the sagittal 7 combi operations for the contact / coated / j tk of 8nm to the formation of the // (2111-like "a 6 equal to 9, the lamp t, and they are 1 ° regular analog/output devices, and a ? monri # u and the governor valve opening valve o\*j u control device 11 from the confining jj7 previous position j output h itm-forming straight lb + 2 pki. manual-to-view of the loading port is drama. keep sword! squares ? shrines, coupled with the combination, and it stopped operating together with the initiator, + 1 ° and the sea bream bin@t & control on the 0-valve opening. tsutomu coater governor, click on j are each valve opening even fig. 1-j to the trident, to narrow down the device 11m 10, l, -m-position a rl 114 j j5-r' card! water j e, 8a, hydraulic operation valve actuation operation narrowing down p solder, governor valve. ginseng in the inductor combination "20 u-phase digital force of the rev counter, 10 output data island sagittal, analog output analog signal 1jj [1 narrowing paper making without variation, then the valve opening follow # i and the governor valve bulging akira yielded-20 j column control device. analog signals to heat transfer is also not shown auxiliary straight, non-slip in and a valve (not shown) straight down this value r & #39; f) the point applied. further dbh III around the computer 1 # \$-assisting device j9 hold some of the

understanding of the present invention, when considered in view of island: yes, the vehicle headlamp 4. j governor valve gv ? vt / main a tv, hg t to 41 ° gtv and associated operating system of 11 squares 11i ^ @ fluid to be used in the dark blue j10 is subjected fit. the pressure body @ reduced to ashes ? subjected a 310-year-old eel 19 corresponds to the pressure fluid source 449 and it is a synthetic ester flame resistance and fluid shield ts # If the foundation for u! 101 to l (414, 415, and 100 to 7 ° / 100 / p1b) operates in bulk yoke surrounding a conductive tii piston 7 m / j is the aki, carboxylic a and j / 4 is y o u l t unloader valve through jj and j 5t release the water storage when tr incredibly brutal z <v / g qi-gv1 \* g% t-t.ff to v / 6, such as the operation of the fluid t".sub.if flits. the gorge, oxime-d 2 j / v-ri, rapid operation of the # 45, another of the "tiger pavilion, and release properties of the figure number, (fig. reference) p # conformal 5 &#39;1&#39; electrical water pressure + free squares j2 is large moving tll co 6 a coil spring against the opening of the # 4 inductor l 111f valve operating position 7 .theta was 11 split for irc li shown. 8 to be driven by a servo width l peng gang-rape in the servo and a shinto ritual to child t / j is 9 of the flow control of the maple t i u 10 servo valve to the high-resistance body @ t1 shooting zhuang subjected with respect to cylinder 1.y more io operation no. 1 squares! ! to enter or exit the operating fluid on (t12 to @ m 6 wi4 a dlm & l voltage transformer 13, the vtd energies e-4d, m1174-na flux valve position ii is conductive distal nose tortoise field t4 w1 generated voltage instruction [valve conversion ic as described above. one double the voltage than the servo summing increase width vessel, 64 i / o1-411 front position difference input signal with the introduction of a direct-voltage difference with 1hl, 7 transformer, vtd is good housing 6 embodiment, a straight-in voltage characteristic for displacements, therefore, 1.0. valve operating position of ribbon-700increase point 41 years old) / l (2 °!-the end page position information 5: 8 squares basis if the refrigerator is proportional to the ze ij b with reference to shot at the t.44a-j ? daisy-analog one or d llk le h around the hunger and combi-III) / 100 (fig. to form a part-ii beep # g, o, and the ri i block g a, 41a to the inductor to fig. 4a component! 8 + 6, together with a separate o configuration gold, inter hue chair celebrate ? seal j11 is duty dl / analog ?-s!0d is as a part of the interface s/co-food of the hybrid vapor of dark squares 7t width d ? servo operation 4 may 39 g / iik mound to "\$", the generous suzurie(tm) is in vibration-seen dimly-excited charge-not shown / 6, the over-chan mino biu stray afraid of what others may think it not shown in the outside of the garden yarn conductive surrounding the ? in accordance ? different inductor 17t as an analog device that has a child over 11 ° sagittal nd \* 4 + iu casing 10j, v-o, an ordination valve i-t on the vlt tu j11h4 in the kwe, 7 pg, cabana-bu-v / 7 [vi, fill the nak banner "r&#39; co-? analog type, even kl is a turbine for digital-evening yuzuru combi ii j10 (rj, c-q), it is k, mark the darkness, the child table i1 log florisis / anna # 10, the digital-analog combination initiator 24 from the lo-jj11 19g and a ratio: uf ? soft sit-analog of the analog variation hold between 4 et r: b1n1 7j compared comparative 6 zj soot, no. 651, the upper from the lower to the curran, s24-a combination 7 or digitally the initiator from m ana ?l z \* log d hata sword to cut down on ok s point to cut off ? or 90-i !=j, and rumors on j-ding counting comparator algae a gan, bs the voice! click ka +. co-winding control). more particularly, the oblate j #. 11 digital-to-analog!! mackerel, 10, 10 is digital computer analog detection and .theta, a sword and failure of a field-lamp or 5-? smoke. on a beret null operator, escape from emits light at 1 °, the ? as iron lees rice tewi sir as described colloidal 15 properly. convenience stores, daisy - 10 combi, power loss of the initiator, or digital 7 j10 of the stop, or the like warm-up quietness wide range j, 8 bonds! mark of a degree don't lose one shot conventional l-shaped foolish. to 0% combi-dhh tool an evening # i, y-li q-moving back-to-win favor ?-1 of 4 t & monument, the day operating water pressure at the time difference field # j (squares in fig. storms co one to the trident, jj) entry in the shell front position of fk knowledge! i11 \* sum jo, tortoise shell governor position j (ax recently revealed # 4 fig. 11) control valve or soft-ti-\*, \* a governor valve implanted kokoko, hook (first 1 ? @a in fig. 6) hand-winning favor with an episode in 1/4 of the card-if switched to the jl reward with 1. oyster with not forming the upset or tx-p j, convenience store and hand-ri winning favor confine io tung b communication i" cabinet is made. 1n, + to automatic braking and steering (t-swing to switch the computer to # 10 yen dzu sagittal in 1l) the above-described (a1 &#39;- turtle, turbine and plant operation and, takashi l'.sub.1 141k l4, preferably, the z4-? sequence is, however, the hybrid of the present invention is applied inward and outside on the fig. 4, the age of the entire invention g on the side of the t &#39;is being ? ivy-kyou haze are shown in f le 1 and i3: 4 steam-water (dk) @ or l) //!-toe computer around the small ?o is identical to the first view, and the ? points one 2 "a turbine 1 the turbine (fig spear ls tok4. a a > t 4 y-polarized of the frame up-bi-jin-il;- i/QO be envious of FIG. 12, the combination of "5 # 6 corresponds to the sagittal u for 10K co-Bi, the initiator 10 backup device 71/\$18, digital 8-? interconnected. Convenience stores at the ginseng and inductor 10 is @ / 10 / 41fl shrimp' co-lj1-valve 9 paper making a stir the soft around the valve, and the governor traditional co-1-one, 2-fold, Kaoru corresponds to an element in the turtle servo, 1 of ribbon @ / III in the computer, Nj the sagittal l ^ b @ along the sea bream in 2504, Ana evenly from the second mode to the backup mode is a% of 1113% f mode to the automatic mode, Conversely + jogging, sea bream. t-free transmission must not, there is a consideration of the cruelty inflicted to Hoi commandment. 1I1, 4c are escape! If digital-Bi, 6-pack at the initiator I and the analog the I OJ equipment, 710 / 4dl" during operation mark each other&#39;KA-IL1 turbine power plant' monitoring and refrain from l1 to the sun?! III III, A14 &#39; give relief to Kyosu the hue of the valet and end at a time:. 97 to provide a ninth millet 1l, the digital 1-III is the combination # / tasks. The reprogramming) a support arm and arm-enthroned emperor task on the logical L2, L11 write the zum, this hologram part operation of four-pep talk to sudden to achieve the effect ability, t (i !=j, and, for the \*! Kazunari module storage battery. 1II-? 111J and l &#39;structural element one Hiroshi costs and software elements comprises 1 # 4 control loop 4 and the software is made. I !! The combination tag non-airfoil log) is Kt Lil logs to storm in 2A of the present invention twist of the fly-S but silk crepe committee-intended sufficiently fine-resolve. Peng, missed the seal. L5, the steam-water (turtle convenience store If H) 41i from the input control 9 1/10 (R / 1% m-DIR"? A. The speed of small prize 0 and @ 0t <placement and on the other hand, when the talk-in, to be holding bin) valve even allow!%\$ / e ratio to governor valve gv to c pz / lvt it is to position the j--dynamic task%%, # a peripheral insert the named koto. brief and ordinance of the goodie execution, then the glob tortoise shell 5i make a thundering sound ii k l @ 10 ji involved with the process of the &#39;zum pj comprises a ?-one combination, sagittal in the range c' for now, with reference to formula a nail-type @-f wherein replacement appeal the ei2 through the appropriate ? figure is straight, combi-s / 100 shaku don't play games with dice, a 10%-row 4, 1 &#39; don't task pictmap vil zum. horizontal 10, the gate 10 u, and -a-kai, gk setting location determining input representative turbine operating tasks for m-v 6 10j to the mark to be ok, the hippopotamus 202 7 it is a sword oj officials. the ?? pallocall tsumagoi cedar, sn is a eyelid v%, assess the ? in bu bu sealing \* v1 / min, the rotation of the negative is i1 i6, time in the power generation j, maple book. the electrical output, megawatt caused, the mess. e, input/t0 become cost yahoo!-the ratio fi4'-a2 in fig. 10, soft plastic enters the rolling number 7 + 3 (2) fist or salting salting 4 mw / min or 9-? throat force also, either gold sword 15 and input expenses - takashi and should be used in the # c@ is regarded as the ii [in t-integral, a kei. note, and the mega flk1 on the safety of the input content of 6-equity will strongly to stress in the hl. do not determined in comparative ivy # i-1 descriptor a the output of the double integral 10116 10 4 9 boot is applied to the 4!! demand bonds @ mass ratio in block 1012 the turbine of a steal operation setting in the world of insert-k compared to a conventional r cut no. 0 is a turbine speed s 4 rolling takashi conductive mode, raise the negative in order, vh #, a turbine rotation mode according to whether it is applied to the k number set value, 19j., @-sword-fashion. 96 comments on the conductive robber fly and produce a loud noise not behave in an unseemly manner ding 5 constant to cut down on one of bereku on jaas to yes of ? the number that has been fed back-v of the capacitor 6 (ffr technique j) is a digital value an analog integration and the initiator 206 in combination with an analysis is limited only substantially limit tewi. after his integrating the different frame descriptor 4 minutes four-inductor 101 (the present invention) based on ?? force who become switched. and fl is a pyrrolo-fi for comparative inductor 101, and a ratio of soft, 1012 to @a ? cut input and output 1 and the om vase h single ie) wath excellent polarity difference between the sigh in admiration s 81i or block 101, is applied to the seven to the error of the physical properties of the thus two-way integration true-bu-18, 110 are casinos hotels positive difference in steel o ota-anti-gaya. i.sub.in the invasion of the iii yu jin-?? and, typically, the reference demand, takashi yarita2 is scarce! that they each other or if required, km0-!!! gantry rotatable a predetermined amount, the bales a rack 41f s 0! t # content descriptor 6-tmm. 1101 84 integral with the input of the ? gold, i.e., m-f to not III la & j is input also i !=j, and cruelty inflicted turbine operating the 4-force-blindstitching the inside of a &#39;, n.; if <a \* v # l'.sub.y with kf 14f input with up-ratio, shaving razor borrowing ? board 1 over from the comparator, based on the abbe placed in. 6&#39;?-.# # bu can be toka and m input. auto - synchronize tatami-value rt 1, one of the out-of-the-the combination-l11 plane, the distribution of the combination. fy2006 should keep the initiator 11, turbine 2 iih will give up glow-equal to 1 to 1 boiler 6 ll1 an i coupled 1" with respect to the placement of the 3 III @, 4&#39; treat a hf: #v it is possible to resist il1m1" + 4-excited light-?. the third hook-mode. -10 ° boiler seven major figures of the force and the input-separately hold the 41l, 6-vh \* however, examine the horse bit width, removable. no. 1874 series analog input vh-charter for the tj, the recurrence.! shinru-kv. 8 mg%' mode k, c \* fi-time child bin, while saving the system v-juku turbine provided stress 1 die deprecate self and praise the listener 1999:-end 10 of the controlled as an n1. im3 is a narrow black earth god-like load as the number of opening of the hitomi turbine operation can be controlled block 10 · 11m minutes! r411 from the 11 block output is 5w, is directed to determining 1060 jl decision block 040 # 6 of the main

power generation time is a 41, and the communication system of say more than necessary, or wins controller is used in the negative #! rm should be with the decision block 102, ms \* 60-s of the ? hiroshi not determined with respect to the device, to determine the clock t o4 is made with the decision kl vibration is the first task 10 co at a point is made in the needle-like bu of the ij thereby and, therefore ! control task 10 20 &#39;sa required for a zero n to t decrease also negative five-7-takashi / electric machine 7i is opened, the ° 1-bin apparatus with wide, ask if the speed system group # # l circumference of the globe 42 is a comparative plotter 10 is applied to the feedback of the actual lending's ill loose! the turbine power generation (comparative fine speed is compared with the speed of the plotter 104, shun error value j to well over @ descriptor 2 in detail, the proportional sri + theory pledget tdf # g iii block 104, it is guided to the co risetsuto even example 7 las car jtag block 104 1.12 [degree zero the control signal very small thatch-? in the task 2, · im inokuchi integral function in the prior art, and, the ratio l3 ratio is limited to save hiroshi 1li to be conceited familiar with t4 plate is reduced to zero, the error signal, it is impossible to manually open, in a special 6 constant ? luck 5 rolling 1l, t is li and 6-pin offset is kk ? yll predetermined in order to maintain the speed is not required, the rotational speed of the peek. 7 turbine 7 minutes in a warm-up between a normally tend heavily toward opening the turbine a very ? and the sealing determination is. 4a, it is sliding, i sleep very high stray ?-, evening, the external synchronization. \* this special tg soda, 1 and ir 1 (sword instead 2-in. it is synchronized with the n-reset control, plus, block 1041 at this time, the quick configuration from the output of the procedure, it is described in detail in fig. 13, in a long-?, 4-kino governor at least 7% throttle valve and 15 ° on the other hand, and from the outside in order to position the test. the ministry and biased against the king of pop 1 ° on the wrong pair of shoes in the cut injection kinuta ie is closed, the anti-t) + 8 10j not worn, jl is the beginning, noboru with forward. i \* and the feedback control on a patsu ii in the forward as the pore-variation s pictmap dzu <m 1, escape from the nose block 107 sigh in admiration from the advance decision block 1060 l-?. jl king! al is power generation bean paste and a turbine 1 [be cut off contact, an electrical circuit that is started is one network to a negative l'c'.sub.i \* @ smell of separate l / a? iq 41 / io negative curvature of affectation \$19 fig. 1) field being envious ijp k when the operation of the-tiger is a gorge down load 11j d i11 and i ye. computer by fraud 1 # @ db) become pregnant-wheel of the leadership task 1020, wc the load jl f-forming a speed correction regardless of the samurai! for the output [j + fs chest and spring loop robber fly-bu in summing block j @ 8 compared to the 0?. more speed w4 ? shun ? noboru akira 1-loose with respect to the flora and kazuyoshi not load wl-only write. # !! &#39;&#39; fill darkness, mode of operation the power generation current i6 of the constant cut off to not weak, membered ii employ ding! angle mode of the power load of the darkness, megawatt combi-h / 100% sorrow to control device 1111) should be kept to a predetermined it is negative - however, the kaya put on airs predetermined dimming device frequency of one theory to reenter-c, m1k i can satirize e ratio k & soft-read fifo's descriptor 1 inductor 10, the rated to the u109 to be of two minds over one examine fear of scratches on the i branch 74 and the drive out no.10 to no. 8 co ratio. false soft magnetic-blooming as described in construction completed are integer l is value 2, new uv-block i t q ratio god soft output from the speed lee a chick rlj will place the ratio ka, a ?-minamata kanemoto yoshitsugu of 4 in the same manner as the l or n are associated with the logical ratio method B · i l @ 10, logical block l la 10. table wa is a weight-ratio th-i6, i drive out state from the cqj 11 forming the mega-rj, the word-level 7%!, e49 seconds as a feedback proportional-finish in moving from 9 stations and megawatts, that is blooming and mw-standards: is a boat with the conventional rate of 10, no. v-? auxiliary polarized in order to \$: akaji maro nose nose. in block, fig. 4a-. 12-speed auxiliary storage battery conventional sip ? noboru ris rolling the negative ratio in block waxes, and iot v 4!-1 megawatts is compared with the feedback from the difference between the mw-hoi, 4 is formed, in order to finish. t ratio t / takashi i reset control, a lath or the four-h 6 &#39;, the quarter-on-glass, like a card stolen resellers, sac 7. an example of a profit ivy / speed proportional to cover the instep, eight sets @ galley or ground ivy d111 times tk in the maple 55730 r meshes. similar results begin to open-ding-proportional-to-! 1 0 1 0 1 may than il galley: ground end 11f, it is 0-100. iot control after 1 crushed bright-isc is 1l to cast shin tae1-we break, noboru sleeve the grasshopper is multiplied, 1 mega-feed), that is, if i do i finish will forward turbine ? red tweed tt multiplication block i in kl-noboru mk is not small field! 4p -% l / 9 of no. 1, and if the look of the megawatt spring or shortage or j# to examine (dust-hair, or thoroughly to the old i-to-v combination 198m / 100m straight down to the iso or + strange not surround the denitrification ginseng and multiplication is utilized for name-on by fraud and a long plotter i (j l, geraniol-f cutting ratio t sri descriptor a dragon being indignant poke in the watts from the wisdom books through force us i-bi-im3 coated 1m / # l i # i / 5 4 through 701 to the non-control-the 7th keio ? ding qiao @ human power in the world to pressure the supply / iii from the bu) p seen sakaki vote clk1 auxiliary ratio mw rf ha shin gi ? finish i am j from human power / a seventh pressure from 1g network, don't miss the features wfl pressure display pi & 4 @ compared to il and fl false!!! we have negative pressure change ratio l, gas, which responds to the yuzuru modified power and speak with an accent the shun training 0. (1) in the response or the joint m turbine power generation 2t ° yes response to maple-h1ii smoothly minimum of hold no. subjected to tl kan shoot a ?? ? lil whip-? ratio k, 10 w are cut from there situ (4 \* i + 0 self-fl4 / 14 \* l imf is t6, the feed, finish the para! and vibration is applied in the forward along the tortoise shell) feed-forward-standards: impact pressure. seven and 7-ik ratio 48 1-ivy 1090 ° in the raw, do the pull away a ?. 9a-output of the falcon in the pressure control through feedback bonds 10 # 1 and t-kan, the results of the impact pressure-? (ii) scored the pledget-specific glass-galois dragon takashi yarita1), inductor 101 and the cpu 11 to the operation control such as glass or a proportional-reset-jk-f is applied ivy palcall tsumagoi / # m14 \* to the proportional-plus 9 toe boot i / d 5 and valve gv eai/banner-v.sub.ij of the fair, \* 1 between the straight of the ttg, pot 4111 associated with being indignant @ 11 is inserted, 17-a to k after@d image is associated ? for cutting abuse dragon [1 combination, and the initiator device 111 and 200 with @ being proud of sorts and seven in the l1 and l1 command # 4 rolling the other hand s by fraud reset cast glass system. biasing ? proportional-tot ivy.' so output separately from!!! i coupled directly il4 1 the electrical position 14 implemented with water pressure bu 1111g finally loop governor valve ov hermitage mae k axis ratio g with vf galley pledget four seven-sri false poke! &#39;side 10 at the desired set speed from a dark display the piano keyboard by selecting the mechanical and \* m watts, the double pressure deviation in on the interspatial comparisons make up for 14. l1 to achieve the mechanical ? watts!) in 11-g mark squares c \* v / fire hook-a governor vt. impact pressure, kusunoki y position with the lk, f &#39;clause rail 7-9 parameter p0 (vt-i g v i. lfr, which help rfl lik 1 f4 may be changing rapidly, since the reset side control proportional-glass block 109j is professor jun-ratio t0 of the head block 10, the tfr is!! but dream bu j, j &#39;insert the vehicle headlamp, the meth (j i0 ° u shown or a digital electric combination (d) water pressure bu speak ill of the folds @, 1 # is used to inductor / 100m glow. 1a of the firefly brief and a sinogram of the instep of the ribbon crossing over n-phase inductor 0-? adjuster 10. 10, the control affects the glow mode and the hologram or the bu, a determination is made 10 ° shore adjuster 11-grams or glob operator input mark in a predetermined affect the panel 1 in the pedestal 4i # j, 2 /// // and auxiliary period meth in 141. 1 ° with bu-fl, v: input processing s \*, the ministry' the logging data from the bales ii / receiving rt4 analog-value takes / l / c 4, human power. c@, l1v and the beak the conductive needle 61 outer takashi predetermined county 111, knitted, a peek, 6 output in the form of sip biasing receives data 7 =v constant kan, and it is time ta # 9 ° to 10 u&i, the helm apparatus for the order of (b 10), maple-clock-e theater block/cluster/co-ii @ 10 and 10 a / (c) / the a ? jj-enriched the auxiliary line 2 synchronization ram loader) the same ? seed / miss each other to control the 5g grams/he/il can also view glow of the j1, combination input/output operation x-bu, \*\* dance. in general, the use of the combi-the initiator 91: @ with a live-in accordance with the priority of the anthem hit the 8 ° to fill in the todoroki@ pj0, the # 6, the combi hoi an initiator and at1 and monitoring, to narrow a stir-fried 4 p18 of the monitoring logs. 2 }, and make roar! excellent anatase phase input point cruelty inflicted authority may monitor routine and end toma hayashi: 12 described with reference to, in this article i don't buy these component k j & glow-tj-platen 1 hologram hologram, monitoring designed to glob contemplated. 8 task 1 screw !! 110-j4 disposed conductive // koma-yu ji-f-number at the first tactile tactile is given, but the writing for the slowest grams/event 1, v1 is output from the / j in krakow, the llo tewi, # i, australia's lie parameter is described in the 6-like \$-for institutions, and the foremost turbine trip/bay 89, interrogation data stop, in t-shaped w, representing 10 grams / execution / inner glow, l / in the actual a / f-/co-to the instructions from the a / i7a, one end of the /// ? are .theta.1, of durham seal seat angle @ i wait for tasks to be afraid of what others may think / 110 i + .sigma..sub.j to the panel /// cost task data list and the output receiver is one rung 4 akira inclination mom 1121 and transmits the data to task/operator panel button panel / / j / j is from the robber fly j supervisory signal received based on the data r&#39;ll, or v-lle // quotas panel lamp jj-al cliffs, beauty l = x 1 l-t) / c data 110j the auxiliary outlets for evangelizing to le 1111 ii-a, task is 1a ///@la can be traced to the iii-hoi ill task 9, the input serial / anatase // iron 1, the visual display, with i.sub.ij and @ task light 2 j & evening 11: // synchronize haptic display task-?? i.sub.ij / tk displayed / j transmits the data of the dankook university--a 40 make a thundering sound of the turbine 011 to drive a total: @ h the initiator i click combi ii # 1 caulking portion 6 dishes of the bud to alter the l-i1 is represented by 7i tomorrow, get ready!] 1 on the hologram 100 analog scan, j-1 "9 / descriptor c arm / fil from the saccharomyces fil jr. ft-hoi. don't get edge of algebraic receiving 1 ° of a generally considered the following such as kyushu.! 1020, u, l-valve-allow tv / 100-e, + 2% g-banner and v / v11 gvif) position to the t-box 4 \* k \* + s needle stray bonds turbine pressure, and straight, shoot, including the mw output feedback using the electrode number

5, thereby the turbine 10 of the mega, 6 speed putu load weight ratio [1 + 7 1 #! III. control tasks and the relationship between the stoichiometric, cell # (anti electrokinetic. the field boundary, t-special interrupt the durham // j] jinsun liao proud of one l / @ meth luck / # of the bridge used in anti-t-to, 41k for the fringes as described in the constant state based on 9r\*k-like layer ll all of the nose, and the management data to the needle sm \* 10j, e', and transmits to the meta-? 1 narrowing down this information and ?."v/-biasing!volume 41 and the governor valve gv/vi' with [d-forming position determined plus 4 heavy # is used to vote-task/double ring 110 in a predetermined shape of the glue exploits ? and the relay point output lang wins a-type to tti of the operator panel operator and innovation button 11j to push-button switch of the elk with pushing the control or kl, or gods hoi an ?-task parameters panel 46 /// for jk therefore the computer should be placed in dgl kl-ii and computer system @ cage 0 turbine 10, iii the anti jade discovered // combi-if the initiator!@@1 liu iot extending in the lj1 of soft turbine tcll appearing for the first time in foshan, o, it is viewed in 4e to be described later to be a ? jc ka as a fourth light-emitting to ze-8117 \* \* \* 1 #. now, the stealth inductor 6 and the ts, glow-? accomplished against my priority table is used in the kettle on b so execution monitoring folds 2, 1, may be performed in a manner to the one or more interferometers, has been the program-priority of the tewi, # 3 grams if the glob w under space (3m 4-year-old japanese bird cherry. i go to stop / start the bell 5 big zelkova smile broadly priority program acid 230.37 230.591 365.6 364.754 the computer starts, the computer w 6 temporarily stop the recovery operation to kyushu-bonds 7 in l4. when the task 1020, lose interest in an arc 8: mechanism of cell p, priority 411t !--do data li tewi panel button t clause operating systems-tse is the priority interrupt 10 double-spot in the mackerel, null, analog input 10 co-klf@/// 4.11ti + 1f! jfil tata -- the petanu yes, and utterly disheartened subjected on the operator panel. button / cost / j low-order priority, than the turbine operates in the door. (4) electromotive force win favor a horse, akira durham torr //'.sub.1 of the next priority. \*\* h, a h-ts # 1, and the turbine monitoring.; 1.60 grams, d: the fl [i, @ gradation. overseas-s / 100 for the operation of the kpm-\$home 7a king of gras, / / 4 +% /% shown as the atb-enthroned emperor. synchronization, l / 4 + #, # 1 gram-negative-yi and while the machine starts up and end: 131t.sub.s, of the gods!, pressure, the cross-sectional state, rolling, etc. 4-f cruelty inflicted kaisei and speed monitoring data. # to generate logical task-like rare inokuchi rolling /// operation priority by the next u-distal visual display task is the lesser curvature of // 3411 next anti l / 100 output from the instep, which ? sacheon city-hadong county. the initiator b combination m-sticks data transfer to the outside from the pledge to hoi convenience store data combining the next glow inokuchi deprecate self and praise the hologram is, for the bq logs at 1/40 with la 4 1 is supplied to the vir combi parameter blocks strange dioxole-analogue conversion? k 4ta of the inductor il / a switching inductor kan wage meta / 0 priority by the next to the next task/make a thundering sound emitting / j, and t-test and the initial data tape 5a to b to equity money ! small of a programr-control console, the next program is hard (durham shima l and a suitable for coating on a typewriter sr? ha] li / co-enthroned emperor inductor switching to the fish preserve ana task/don't prick with information from the mark 4 provided on the i ! 8 information image tewi °. table the priority · i of the next one parameter, the turbine 10 of the four, the hologram 111, and 1m, the operator m to the hoi an. at kyushu do relationship printing or analog / digital/101. the rest of one of the special program 1 and 3 for the ? akira prima facie for weight! 4 restaurants are, ii ?? ? stop / start // start program 11e j5, in the combination-d1 the braking # is ii-6-folds 1100 is completed at the end of the start of operation of the a @, 7 years, since it must @ p-fig. 9, the maximum vcs are given the priority right to synchronize the auxiliary task 81w i d h / l / l 9 on ? lab computer control 1100 is rotating forward, the stop / series-the darkness. starting with the °, all of the non-make a thundering sound 10, a certain period of time, k @ co 1 hotels. therefore, the voice of the petanu auxiliary 10 /// the a, 20-a in the table jis priority? i-position of the vt, the banner ? you, v / v and valve g to g are 5 ? beauty? (permit) v / 11, v.: to the fat-device/comboination pavilion) mw / c0 of the klv. go rolling under normal-control, there is a need to 6, since j0 is a ' task 10-year-old of the asan medical center low priority (, 17m a t / 2 operating panel 0? ri y." 1. 8 m step 656 " &#39;; dii sibi understand each other control device 1 fluorescent bales 100 1 ° and a play time 111, t1 and t! ii system. wq ability of the next rank order priority is given-1 inokuchi, four input! inductor it is a bale - -, \* t make a thundering sound, null provides the input data to the 10 u. therefore, the synchronization. it is fine control and start function operator i iii drunk like a ll yoshie. propagation of the ??, whipping% /%; 1 / seal 8 synchronous grams/10 has the following priority, plow-hoi tenure of the electromotive force, a turbine 88m winning favor ding 10, 10, 14 to the a // scanning computer power peng\_melodie\_formatsequential>Second DFF@ input to the ? 1100-i-0 position of the priority with almost the Hoi I !=J, however, in alternate embodiments, the tower 178 station 411./O A' program 1 j, j' inductor wax dark circles around the relatively 1 I.sub.ij 9 issues an impact to be considered for any number associated with the priority and the opposite effect? it is possible to reduce the transport number and position control of the task 10 co-operation of the 5-tube cutting · (1-processable quietness Ya the fl // The next task f and the destination 4, yu, In ig1 of the haptic display is a p-H / J Tata inductor combination even device / the i-Shinichi Nakatomi). In order to provide a visual indication to the operator in the order priority K-I !=J, then the operator is a visual signal-(physical response to 0 ? 0 co - Koto sec speed display, since users are restricted to a / 3 in ratio, party to be low tack / fl F th from the priority order to preferred embodiments. 3 real riding across a 11 in the example of the low fluoride essentially, this 4 Another embodiment of the invention, a Ksp 8.1% /%, the priority is 1-j is a new program 5 in the same 10 ° and for the Italy at, in order to allow a priority & J &#39;; 7 of the Akira tease to 30.6 it is preferred for reasons of -80 the initiator in order to process the interrupt task operation. The combination with Wii and destination after writing to the outside of the plane f 1. Stop the glow!--hologram is viewed age i / J-4300-I shown in the figure, FIG. 1 such a damn the L5, s7194, arj interrupt 2 to 4 in a very short time, Akira-; For j between an initiator, or stop the combination image Li. pledge tewi !. Yu-article in the lamp cord, 4C get along well in the Todoroki ? // JI. V-spinel, Tabai button> // /// 20 and the panel, the panel task1 in @, 6-d'1. make a thundering sound 6 is present, // I-operator 2, // 20 double-through, whatever change signal for # i to 4, J8 is a copper hologram I !=J, and ll1 of the valve facing after 9 h ? tl bright to the 415 into the valve SP, ndp: accidental or AN 14j of the reformer in the case of bellow I / L (° / operate operator panel button and the spring /// / island tasks between straight along the gods rye. \*\*j) will be described in more detail in a well-glow. Li III turbine 'l.sub.1-speed-like device is back i !=J, and tung-to force certain computer. (for electrokinetic! in tJ to m 10 is a load up to the turbine system and friendly and I cry mega-watt pressure feed pack loop Im Kafka when configuring the proportional the early 1111 glass Bu) 111 poke the majesty 104g as described above, control of the? A III meth therefore not OK is called 10J in the vibration-ratio f + i 7'-nuri pledget, vibration block 10 41f and the angular velocity of the turbine assembly parts and give an affectionate dogs." Palm is accurate is retarded become pregnant, 61 of forming above in addition to the auxiliary / sync 1.0 / 1 amount to 1% the petanu/11j, T8 91 to the A / l 8 A, the facing 0. the anatase // / conversion, the anti #J J J at A'8. 11 (? . K information Li. Pick up a surrounded to trigger A', l" the ? II-the A / L, La is the series to the turbine, Bu Bu, @ state of the speed, and the like monitoring Fj of the h.sub.lv.sub-kai, totm or friends, to start the pop-field 43, a tube 1, routine 8 analog switching to the fish preserve 2-j / l, task-computer information signal Ft, AT8 (a / Music / 111 + 3 robber fly one coated, the tie-S / 4 and the A / is such as Peng, ?-river yu is 41, the analog-to 5 taib tewi digital hybrid type4 is 1: At 6! The 8j will come from switching to make a thundering sound yes firefly Li 4. X / 7 auxiliary / J-? Tata # is the sagittal / analog / 411 8 b/a lightning-?. The system/94 / 41) talc!/?IJ4 I Llmt the hologram 1 ° / / 40 variation in addition to record a set of variables, the boundary of the medium. II--a five auxiliary power plant Gros (OCI. 1, 1110 is here, CI is not input, closing costs. Fluorescence Spectrometry "t0-t power plant, 4 sprue, x l / the I disposed J4 s is power generation on ? beak power, // to transmit the ?-like. So-jin, the answer to the question of the f14 of the Inokuchi, general, 6. ISO, the power generation point of the LII. So-li-like-0 706 174 when viewed, will detect the power plant output kudzu OEI&#39;; to follow a subroutine 111, KL. a ? ? is a XIII-c, K-BI4s: comparable. I make roar hammer-like to the IIF, Sat-equity TEWI, however it is attracted by the bright coating Ki-r4 operator hold hold the love and hate excimer trigger is the master'.sub.I, it is possible to use program manager in charge of fern task 10 u.sub.j of 1 through a speed task 2 and 1 //! or proportional-plus risetsuto reset # 7 / t-shin-called evening!, fog that an auxiliary task / J, G / co-hoi, there is a difference in the G / O / 60., cut off/co-? ivy block/@/slow the stop starting the program A / is used. / AJ; San Jose-Li [0503 coated to a ? as will be described in k is shown an electrostatic spear-years old n // now, FIG. FIG. 1 # and t stealth Risetsuto a proportional control off gras block 1041 whether the pulse of Pt to the outer shaft i shown. Computer system @ DRH, # 100 "serial / invasion, and also control when-like traces of computer control DH) 5L / I 'a 100-i load @ 11K lf vibration and impact down to paper making, megawatt pressure and feed pack loop is used, that is, when the proportional Bonds \$reset the plotter 104, glass mesh-caused to task .tau..sub.t and size-KI-O YES I called. Described as l [1 II K4f9F ratio I 421 p-x9' and ridged on the turbine assembly 2, the angular velocity of the positive!" O &#39;;+ 4, is achieved. UNICOM # 3 ratio change the vibration-Gras Tsu) block 1041 Dragon 942 four parts of the input, output t i !=J, S-5 is one of the attitude of one flange portion 7 +, and the portion of the input region 6 a m5), Therefore, the force and the differential 7 quietness zero input VC--co-RESPONSE with "a temporary directory. 8 or demand set value from the mechanical isolation / 4 the difference between the coercive-? J / J / 6, 9 / Nyutama to is applied as the difference function u-t l-l and the actual size of the input process. @ J / p-atone for / L 4-t' to compare! 1111 / J / J, gain, the output from the integrator 11a / Co / 4 and to 4% / @% 12 are integral, it is guided to the input /

Co / volume of 5 l) in an open, the output from the 9-u l # 4t is prevented, pledget, 4 finish-\*/J J0 grams, as represented by the &#39;descriptor d 1 ° Bu t.sub.I4, it is a dark circles. Device to the product in 6 minutes and @-, therefore it I DO saturation in the conte IM 7 y-discharge integration? L is 4, 8, seventh f to close the ?? width K-A?@, lift device>% O Japanese O any scheduled time digital vibration to I !=J, and DPA 4 Connecting. Ge: 15-bee initiator specific award for digitally, the reset light is kicked in the researchers' designs finishing visit Lujiazui # (4s u-H / I / . 6 and U / l and m minutes intermittent reset number / co-finish is prevented ll J an output from / Q JJJ intermittent are added by the adder 1! Koko 4 between the output from the / J / J-jik! Another consciousness of limiting by n °11, it by the use of the output from the function / ?, the JJ t process&#39; A It is directed to. Useful output to limit the range with reference to the figures, the ? / J proportional reset control block flow diagram of a plus for is shown. Good examples of&#39;-f, the helm control task-l-o may be called from the reset control proportional glass 104t of the plotter power Kw variable costs required in the table 41 of the 10 grams kyosu will reset subroutine is designed the configuration of 4.? Fortran list represented by the knee ????. 1&#39;Rr, Rr (E! subroutine preset x, a, XL, RTR L, RH, HL, PH of @ 90 on the is limited as follows: The Japanese auto-run 3 a 5 corresponding ERR isolation ERRX current input to input 60 of the control device ratio J Yu Galois type G 1% ? ITR1 on the l-L, advance control ON time 8H around the pledget takakuma II on 1111. XLL 161.. 11 (C1, E8, t output s11 11PR iss 8 control device 2 1!--A: long output + Tj accounting? T5 and,, the proportional-lo. make a thundering sound system descriptor a reset operation poke. + 8, passing a Y (n)-(N-z) + 1 wherein r-x (n) + x (i)" If a ratio I7 next lame Shukugawa Risetsuto. m-plotter 1041 next call. \* RR for @ X / place Co-current in 11RR! 0 input @ output, storing the piano keyboard by selecting the vibration ? set cage 1 m / set !! On ? Jj Kick to f K g @ to prevent low f # 1 u 4 2!! ginseng and limit the output of the matched against the proportional part of the nose, and the total a count output Pr in the R8 / 21t f-shaped in order to list a "Wisdom Books 211 integral integral portion 181, seen in high-MPR) C8f34 lower limit boundary / # 1162 & beauty is matched against east-to play. Plus Yes to reset this pro-lamp system, 1041 ° 102, compare meth OK. @ glass 9 above, the plotter 124, the proportional) control a reseller, two different operation the turbine stage i llf) 1 - l & anti-trivalent Is one to the p-? in the bin, the G-light in Example 1, a predetermined reset control value (lath plotter, predetermined acceleration - Fx straw Kp) F / fl t s0a Lel, skin and maintain as M-M1M ? # 11!). A reset-optimal proportional plotter tt glass p&l cut friends of the MTJ of the turbine t minutes ability tp0 of forward / 111h-minutes, also the operator it is possible to hold the one bin have is a terpolymer of IQ, stirred at a speed to a predetermined l1L 1 a, the IVC of second proportional offset around the child error is not required and the input signal of 3? and innovation, therefore quasi-interference, and 1M 4813 in this case is f-number, and the like turbine speed b 4 both a small recess 5 of the proportional block glass system 55730 Mw pledget hunger and ta on the m feedback I coupled vibration and impact cross 6 crew chamber pressure feedback control 11 on the patsuku bales Bu 7 j 8 L-I, also be used. The Digital Duo 11' of the integral of the mathematical coupling 1! 9 positive a number close to the platform, the zelkova, minutes. Busyness of one to t w for a good example, a!, 1r, the W in order to subtraction minutes catfish O Jin use rule 6. 1 ° trapezoidal it is abutted spear zelkova, C configuration,. 5-t4 + e \* f-1 J: i to L <l e, 41p jh-te, not steep. i 11, interpreting and executing the arithmetic. t-seat inokuchi high, particle size 6 to input "luck i o bonds of the k, 6 for the next multiplication i !=j, and confucianism, 11: plc by fraud, shrimp that used. name! (w-y (n) "1" y ") i (x)" ( "-/end: 16 f, the constant & claim 1 rj (n) in the following monkey. i \* t-1 j & to temporarily conductive (n-real-time of the illumination / immersion)-seki-a, lottery between 4, b is a n \* f + open time arithmetic ribbon, i want seki) gh!-computer control may, 111 is usually 1 seconds to this n. the system # l-n lee confessed by time-ll1, the current value of x(n)-n-type / xl)-? yu power of light" (n)-output of v (n)-output hiroshi-/lees of immersion of the now? t-impregnation / j, fig stealth egg is small, and a part of the apparatus shown in fig. 4 program at the todoroki named oiwaregiri / evenly through a portion j10 is shown. glob grams/90 speed loop 310 as shown in fig years? the rated speed at the time of fm of ginseng, ls!) is, 6j turbine speed bu no. us-a no. 10--10, comparative txy ratio f1 with respect to the plotter tl. system number 1010 and add-101a 4j1 the action of formed from the kth index feedback is loose, and the necessary data to the grams/loop 210 x degrees, please call 042-481-6316~sf the trill, the petanu 10 co-cut-through rate of 1! the ties of pericarp uncountable fear to trident called &#39;jj, the blt kk 3 proportional control block (evening chat as shown in comparative evaluation run. may i ?! of the difference block 10 with respect output of the band-? co 5 through ats.sub.i is a proportional constant). (gr extending to the warm-up txt field box number 6 (h ? pottery lf) / j / ah in the count t4: 7 series ii through the seti@pdi, intake and (8) program a is the speed down-side 8 one inductor on during the operation of the load control i 9 i-shaped hazy moon called inner type is n6. subroutine bu j / co-tei memory 1 ° relative to the base and a view), storage 11 with reduced demands on the combination one is the operation of the ehc control device of the digital computer, and so on. the required cost j m t13-to-bo, 14 non-japanese akira seki / j / j is compared to l + s plotter 10 ik to the speed difference or w14 small noise variation of the speed of the evening, 6-ku bin 10 of the t to the prize in the stop ? animal non-?. 1 ?, emperor, the device is essentially a% / repulsive can krt, 8 small variations, as a result ll, in response to tdf1 # 19 swinging bin"-se of the vibration device 0, stress is generated in the 9-roll!, zelkova unnecessarily time consuming for flights to repeat the am of the frame up to the gain in the vicinity of the clauses continuous rated speed ii hunting zone or non-variable number / j / j occurs, it will be the absence of backlash core is constant / ratio j / rated speed error for a given turbine ? power to produce a megawatt b force speed correction is set to field 314 can make the singing/mirosobit koji maximum turbine speed correction to the scratches ?? j [i, j, tt of the turbine 2 is 87 degrees from daisy conversion f of the llrr signal, s-independent speed signal is a magnetic pickup, these speed generated by the electronic circuit of very special for the positive 5 1 8 a digital signal by the pick-up&#39; al vapor kl, the following: (g j-accurate analog of jf upright?) ff signal from analog instrument from the pickup tube. kishi alternative eer system ii combination? the ii, 2 compares these signals and speed up the control screen for the velocity compensation control of the darkness or tung negative logic to determine for flights with ito to correct these processing for selecting a signal l h.sup.w 9 8 @ an ? shinichi nakatomi combi llt mtoor cx-shin south! use their names in katakana after digital analog ? accurate channel signal channel signal, switched to the 1+6 or under a predetermined dynamic ?-like two-fold. on the contrary, we will now be described in detail--well over 3 # i (detection 1! this kflt bright degree signal related li, 1 one! 1 for switching localization o ik of the governor holding the valve apparatus control apparatus for ies-r-1! the way off log 54 ka / j 10k 61f, and in the light-the foundation that is equal to a no. 7 heat transfer speed at the beginning, to perform a calculation, 8 ... l-to-6 and spaced apart? sediment removal, m, q, speed through arm / l 310 f &#39;is blade jl waterfall. the ik (k photo. table w through the robber fly&#39;t, i visit a little bit of luck and making a thundering sound / 1 , the actual y-means 6 at these conventions: 13ca, 2, pd-ll8, f\_rg iff + x, l [i soaked in dmd. cause is defined variables are: 16 on the corresponding photo 1m, 7w turbine transition japanese sorrow rated speed 8-x group type, 8w + 9p! turbine speed" im temporary victim of end position f storage): 178 pdp with a lf band ge rate rij of x speed ms wly gain p411 kettle on field training? l shown a kl cci 4 such power plant power plant subroutine / ti ! 0 i j6, k1 wiring fd all of the computer with an input digital sound by scanning the convenience store and get along well. this ??-p in the memory j / the a region and the logic data of the haiku et al. of the event is set to a request, such as the scanning order of the program, resulting in a cci koto no. conductive // the hype subroutine! 0 # l how all computer-rj, d [make a thundering sound by nmr theory. 11j c! 4 @ //! 0 predetermined subroutine conductive cci of the block diagram of various functions as shown in the figure, j pli power plants subroutine ii: cci! double sagittal j10 to the lgbt computer power when turned on, the computer 8. rolling t-1-reset button, reset & maintenance panel 10 when / . 6 being pressed on the tei is retained in these situations, the power supply to the o%. koto-? galley/co-routine call! i ratio h / f. 1w power-on routine can stop starting the above-described computer hologram 2 / n, z, a 3z" make a thundering sound interpreting and executing the work @ of the next 4 km to a predetermined metric, ccx call subroutine # 5 auxiliary yf operator is also the same, w.sub.j co-coated to 10 grams /// 6&#39; cci / power plant f to play field subroutine / y is the total it if necessary convenience store, 8-kl cci (i'.sub.ik\* lan foot count is 1,12% 9 cc-ism or l-shaped in a group of relay 6 to friends, a wax into-effect combination turbine, 11 the digital intermittent coating is a z-generator, 2, and 1 in order to achieve the electrokinetic control 4013 powerful fixture 31 appear!, explore and capable. the calculated distribution are determined, and the eggs of the needle s force pulling through the interpreting, and executing it. for the point o, the combination a galley ts1a lame, if necessary, us 6 facing each other, and to determine variation without worry operator o + 7 exceeds the capacity and form of the computing mission over a [8-l1 \* can be traced by the ? lightning, supplied to%. each of the turbines to fh4, the process proceeds to sl11 will be more-forming, 2 ° # j & f of rv beauty negative electromotive force of standing directors of general purpose of the heat generated inside is reduced to ashes variation k-l makoto fatigue-turbine gey relative to the coercive it is an l-pain and current design, specific large turbine to be straight in the large rotor and the load l for the activation meridional, .nu.4&#39; in the change time zone of the raw i-beam, large thermal element, variation of the pressure ? dragon mountain fortress is a rotor. table 3 corners in the form of each of the turbines! 4 @ fist given to the machine to the driver to the other state from the transient period in one ir-like ic &#39;not kill by running over cram school, and one of the voices, the transition between commentary on a less than the allowable limit will keep the thermal stress of the time t1 is determined in the combi made in the 4% to 1 t 1 out rotor pj thermal stress of 1 \* c with 6 pairs supplied to the r-i on the basis of the

actual temperature and the bay minutes calculated for each turbine is in a steady, t-shaped r-the assumption is no longer needed in (i & #39; legs 6v-h is thermal stress strain) is allowed to put up with any longer it as one of the causes is compared to a ? and yahoo! by fraud / hiroshi volume variation rate matome being used as a leg 4 @ % / %, the variation of the tdfi # is .sigma..sub.j--as a percentage of the load speed of the tag in the durham convenience store-translated the computer memory 12 is 3 or not the (a car to the parameters of the bonds of the rate of change of rice, or 4 for use in supporting capable #! B disposed four-wire, and it is then to reach the puffer 4 @ 6 or tri fine for accurate constant kv fff for 7 i !=j, heart to put up with any longer because you can not see our ?-jik differential temperature 8 minutes and why acupuncture deployment of 9 bearing 15. at a convenience store, in-ya! l @ t11b 4 decision when the alternative use area 11 by fraud para meter. where the closed each bare salt is ° 12 ° field ii and i · no), the when the eye to different w-the boundaries 13 has to win favor r i \* t o non-u.s. presidential yuzuru plow steel, ll, 4, 1 also prompt with increasing @ j-j", constant for a 1s--determined by whether decreases in leakage, and excellent also 16 or more beautiful. j-o priority bearing is enjoying the sauce 7 retarder-re, 8 of insertion along the possibility that master is 1 ° for the program 9 play a part extending in the fl, 9e approximate ndpa stress (or strain ge: 8 rotor), it#, the sub-hologram of the decision. google po / corresponding to the unit, the sub-hologram is a gummy po. they demand in the near future. minutes reaches the limit clause that don't live 81-t is a ratio parameter, or predict the expected until the ? soft scale ratio is rotated ^ acceleration at low percentage split. then, 4l is the refreshed automatically when the down keio iii is sustained speed holding: if d, occurs. computer system dll-moving start @ turbine 1h1 (h / k) //--to?! 8 & glow rotor stress. a tl between the tl monument concepts for te \* t17. auto discovery and monitoring the trapped in an octopus in a digital computer comprises an analog-to-live fire hook 11 # h, 12, shin dong-start control of carrying out management use m11 to the initial vibration 111k # i & o, it is improved. ats stored in the glob a glow, and basically the same processing of the central l1 (cp jil tsutomu s), it is interpreted and executed by the 1lf a core position l glow shared with excellent both llk! straight operates the same i/o--doc - they are the housing air and shared software 102, and it is related to the outside world that is communicating with a two-point t of the ll1 11 seconds, and t-!! his forecast it it is necessary to ram 8. 4-ding logs rotation speed meshing synchronization at 5 rotation seat flk turbine generator it scales, it can either be one rotation to bark and innovation and 6-focus collection period is determined that narrowing down if necessary? p <7) 5) 1) if tv-governor valve (gv) kf, if for the setsu?ri of sir 9 ll8 to match the shape and power generation device with automatic synchronization at line 91, or otherwise, kim suzurie(tm) 10 positive! 4 + 1 loop-evening with a bit of luck, lee vibration. 1 ° turbine load during the operation of the god-like car or 2,2 acceleration period will be the combination of the turbine 3 the various, to monitor the parameters and their yi, 4 \* t \* \*, and turbine generator machinery, or during the rolling of the \*\* is, in order to inform the information of bereku #, 6-17 operation to print.-like a?! 8 s is 8 ^ is the management control and both o '18 or push-off push button 7f is not "1-the a, 11a, 81o the ats [gek li san, ho state dare to be conceited printing information? \* f@ of j]. moving the turbine start button is pressed, the ats. program a turbine control @ button is pressed, pipe 11, the cross-sectional while. ats & #39; program is a t-related operation is stopped. printed finish% wage class id" turbine gek li san and 1 second button or press of the time t1 all of the electric transport number information give in to an urge all subsequent saponification-1, and a' information is printed. 5rb the combination vibration-h-p pv 3-fx mm rotation and the initial value to the application of the synchronization from the double-? turbine power. al: 11 # and the braking - evaluation of the convenience store-that is, the click operation.) rotation 1p from the generator rotated by the blind of stone say gromark following: every 10 minutes to match a parameter 903, and it's a t compared with the limit differential i.e. #! i l \* a metal casing j japanese bird cherry temperature differential, true the bearing metal 9. noboru discharge a il eccentric k, r · (m--small valve position and @-j to shoot't ° c. (steam-1001 1) 1 (4--a and ? fjc hundred m-f), in the road of the peng, narrowing paper making with a vapor-like change. jin tw. 4 b kyo 3-c) from the turbine rotation rotated by breath. unicom generator 5m 141m is set the speed and convenience store-dl) w1l of the robber fly on select fikentscher way off, 7 (200 rev / min · 1u, the heat yield p it determines the time for the robber fly maki te, 9 (t + l count yk1 111 - is connected to the!-o, 1 minute jj s to accelerate the rotation / 1 · 11m @ [the straight drh combination control governor control in m-? exploits two converting commands the t1311-e'.sub.i + > K K2j f the f the f1 · 14ojl (re-synchronization and the scale around the blade system, Shinichi Nakatomi combination KZ5 \* 1Ia&#39; line, the turbine t-fashion to apply a minimum load 1,6 for the "17-ij @ 14L, the heat of the turbine! requested by the operator holding an initial load of 8 if ° 1 °, .tau.s'-? Gyeonggi Tso: l-b-Bi, a name for the evening tablet of the end of the Parameter: 19-monitoring system and a turbine-to help on the operator information-system suitable to occur thermal strain of the rotor @ calculation of the operational advice for saw down that the rice, slow hard. Done! I n the temperature of the air and adapted to the gold hold maple request set of change, speed and w.sub.i prior to select membered # 1 determines stray absorption request turbine can increase the freeze to become friends shop negatively required through the continuous stage, lectures, it is the responsibility of the operator buds of rs all hologram HJ term is called slow hard clean in operation occasion to do !! not constant line a program and tm, l & Plj is r when there is a program # 1 priority settings in accordance with the conditions program fi is completed. P / PO / turbines and generators to the parameter t--with the concentration m + S They are investigating a rotor chamber and screen to calculate the strain, i.e. they are expected metal temperature differential to calculate the differential and a Ken&#39; glow operation state, this hologram bu those new car I will! I.sub.ij-alloy, but the coercive, or fl 1, and notifies the set will reprogramming tewi table 21 ° 1 the determination of the anti-PO / u-shaped rotor mgb by fraud PO-enriched support for fault expected, + / steam flange of S@" + differential and the differential term calculation and the 1i-11 4 management as I operation 5r rotating teeth in an off-stage l1 l one pop-of 7P rotor stress (cardiac frank, easy, and openhearted, d 8 and the RH HATA P04 management control speed M Imperial of the tube 9p: m, bearing temperature. \*, 2 generator tube. packing sealing, discharging, and o patsu water turbine oil recovery, true state management ? 13 P / sound / Tl, s5r, and a pre-needle-differential, Mt, the Mk \*, 4w P / J-m, 5w low-pressure of the fourth ? 6) J, 7 P-P / detector operation time defect inductor 8 heat collection and calculating the time period, the acceleration sequence. P / j / 4 spaced apart, to 1118: 1! tewi ivy assist amount of IL is 6 ° ? program / exhaust the entire best! ? shows an auxiliary structure i. 4f on!! synchronization program / III is one apparatus in detail, it should not say miwiga L to be superimposed a crotch of the elephant light determines the duration of r) K, and intended to be accurate count in the initiator I il combi-tone"! J \*, / Rf 100, all I !=w4 that interprets and executes the instruction, Kupu Kupu scolding hologram nominosukune synchronization to synchronize the auxiliary mounting the I!! tank grams/10 K40 of the particular task in order to count the wave number in a 13.56Mhz of power use it to sleep S l / l, 1-year-old, FIG. 9 illumination / #-?. Computer system around the brazing process for spring tio-operator / end 4 # I / It has been shown to. playlist shown here! e is an operational (because the attention of the pull-KQ Imakura saw evening party may be a control panel button 6M ° in four to limit / m low field reference field 410. Takakuma valve f1 / 4 / 1.0: 1% position dk4 / i'e boundary / H @ / 4 / 9 pressure field 4 ° thoroughly directory for the operator. Automatic HII s combination @@ unicast.11f \* # / 100a / A / 9 state Therefore, governor valve 420 hand. Therefore, narrowing Mugi / A ? JJ valve 4j, accident / l / 4, invalid request 4 co accident has one of the following ISO field, or the operation of the 1-j in the correct against the Jinsun Liao sell chicks do, 2-down value, emits light when the aged under three, in FIG. 10, // 5t (FIG. 11) anti J & 4 of Tg \* is shown Makoto DHH t-computer controller of the operation of the # / 10 .theta.5 rail, 1t vibration operator panel button 366 disposed on the light emitting novel L and I'm wearing a ?? 93, Force 17, turbine 4 (button switch 8, control and a cursory ? 9 given the sudden inter Hue chair ability but KL based on very easy for the operator, further turbine operation 10, the simulated a turbine 4 in the 11 stop switch VS image make a thundering sound the tree 12, the operator of-up or other computer system 13 KD, Shinichi Nakatomi 11m, furthermore, one on all operating conditions. Under the good face-to-face, 5, g-MARK II-operator panel for ll 6 position and the automatic or manual, Bu is made aluminum and operator control stop, it should be noted, 7 is a panel of press button 8 nm ll ! g 71m ll ! @ 0? 1 gram of temperature related to the v +. 6 ° "h + 2.1 End 1-year-old:/20 further shown in FIG. 19, sea / operational panel button is a tso you o configuration of AT&L% O are face-to-face with the operator. For operating it is very effective in cutting down on the operator panel. l l / 3 (up) button in the device on the control of the control and the digital convenience store software program and a turbine @ (7 -- I-J/IL10 / 6 ° co-operation to improve the spear point in the world, closing force (ll-20) J) of FIG staple of the sexagenary cycle c is shown. o test io c' task tb is% / t5a predetermined wiring / J4, j is any of 6 or 0 to which the contact output of the group of picture point can output r l connected to the hair 6I can CO-Day 6.C the robber fly (staple / b / O'f; i do unless program is ? st # H of the vibration / 100 computer device with the minute hand wiring and sea power plant computer hardware is easy to test. JJ yell figure, block diagram for the co-flow and J-I-order shown in the figure elephant interrupt program 112 to the power plant 1% Spear-/I figure is a brothel.O / Co-make a thundering sound S-shaped or L-province which, if operation for Ze-If & #39; [Fig. 2, the imprinting, blue-green algae glow event--order zero grams grams of row descriptor C1r2 the X-scanning operation of one image, 56, 31 seventh one of the thereby a contact 4 of the L-shaped with a friend and] Rf into the D [i l I / computer evening. / 40J] is input into to quantify the number of blue-green algae. All of the contacts in FIG. 2, elephants stratigraphy in face-to-face 10 g, brought in the MPI of the digital duo. LOL! I - write a given

advance, it and the Takenaka. to stop the grams of ze and rf are now a first U-shaped cape, ? ordinal glow. r forming the hologram elephant-interrupt power generation +-shaped replacement is 1 thousand excessive elongation interpreting and executing the function program, the digital duo-a of Figure 6 in the rrs++ program interpretation and execution of the Ka. Now feed tank 11 + 1-year-old #. FIG. 1% L illumination the I + 7 111T, it is generated by the 16-intermittent electrical load from a nearby sandbank--t8, and the bin 10 again at 9 this is the 2111 begins to luck, 1% to matching. - - at overspeed for the generator turbine, damage to the 4-bin after power generation, blocking I/structures of open ! and the speed is suitable for years at a minimum, the gl shown in J# ! rhl AMH hll-l + l h l14-ai Isoba'?) 10d of the floating communication I 4 when booting off upon detection, it begins to act. Therefore, hologram, of the cross-sectional-? # 11-pin puncture Noboru Krakow, the governor valve GV program I I? Vf-l to Q f &#39;is a one, the blue-green algae such as Jong-zan. 1 associated with the instep! Figure 1a gauze in the flow grams/? 10!!! sliding door, to evaluate the water pressure protection device t is also independent of the over-speed, under predetermined conditions, when the pressure in the fluid to the Sa, to throw away, governor valve GV, C/-force f&valve GV-TV with powder TV / Lt@@ operate so as to close the turbine 10K. Thus further overspeed protection device collocate the pressure cut-off (i.e. ? is again when you open all steam valve, a ?) mono regret I, and D l [J] are closed immediately the braking and the piano keyboard by selecting the combination # 1 M NH of the latest position output as the valve closing valve group -to request rejection occurs, partial load operation, i.e. is in a closed position. Cao W 1 related to hll when the combination of ? (control method) to the initiator I H i VII devices of one is achieved as shown in FIG. 9, l # 1 7 / 4 the anti glow, error grams/computer controlled equipment information DI [141 all of the control across the coast zum ? 10 grams which b5 is properly folded toward the image Fi, 6 Shinto god-error, if it does not glow grams/40 convenience store / EH + Dynamic - 7 control system is switched on # folds t &#39;; 8 parts don't ---K Therefore, a load KL accident, overload, lack of deficiency of the overspeed 9 or interfere. a cluster can be rhombic gras, of the operation of the //-40. @ // The state-of-the-rail, Panel meta / 1 has a turbine operation operating don't glow lamp / 1 ? 1 Taba spinel / J will use for input and output devices, such as 3 °, when calling master. Panel 4-? ! / a / J is the grams// J-10 JTAG calls the function performed by a bright points !! 610. Then, Durham, executes the request on the completion of the panel 7, this feature, J &#39;Bluetooth /// only while to return to the monitor 1, 8% L-panel - Durham, J1 is 19 // // Logical Task/J-dori, will the end points: the 21 and 11 may difference information to the operator panel and keep the blade tortoise shell // [Lang, 7J] output Yr against the pot and the bunnell tame paralyzed. // / J is a one-seventh of the butterflies, sand L5 # A ? view of program / co-fog / J information. zero point output when calling the negative or the number Ding 1% L good. Ill difference occurs, the factory misleading horn task 60 grams TIH The Kasumi? 1 Duo control 100 by hand; f% conductive phase III to the steel house, sea urchin, computer and the porcelain bushing 11" ? meter monitoring criteria "PO4 is an error on the night-like .mu.? editing. The difference between the program / J6 in FIG. 40 rail / task shows a block diagram of the combination control a DEH, m / 100 is safety and Shin&#39;s; Otherwise, the operation of-uniaxial task 70 grams make a thundering sound' // to the other coupled to DIM to 70 grams. To ensure TEWI L in FIG. 1, the turbine trip Rz on the RAM 10 the I, j-l nose is supported on the roller, the power plant 4Tt) disposed diaphragm valve and the valve U / Governor Lo is coupled to the turbine 10% starts to accelerate the synchronous speed of 10 and 4'.sub.k if the planned! 9 reaches a predetermined speed relationship the power generation J [1 disposed Iwao contacts is hard III changes state, and turbine trip in t 6 grams (7, glob play speed turbine ? ?. Not pulling up at 1 / 1t) is. Program the turbine 10, the position of all of the filtration valve 9 garnishes. J to move U MARK. IO, and a task task/co-panel 71 issues a signal to the valve is closed, is a valve to allow TV, TV / I, 2-II (V / v valve G. to a turbine 10f), 3 by closing all valves, the ?, open a series on the soaked in 4.sub.L with a roofing shingle. name f &#39;pull the ? turbine. Remove grams/interrupt, a block diagram of a glow? !? 6 shown in the figure, blue-green algae and Lh 1 ? spring 10 grams 11 # 4 in 40, 21 FIG. 1 is @, spear ivy has been glow. Panel- 1 6 interrupt / q j4 grams/operator panel button I / J-We 1 one O O, I press down 4ax, and ? 6! \*do the fear and what command decrypts the b%-spring": y et al., "4 interrupt program includes a correct response to perform panel-filter with respect to the task/LE 4-? AP itself in a column along the 4v-hoi, placed in a Cabinet Order. operational panel. V-button / force of the operator of the instruction / Rs, if another row--the decode 10 grams of rounding! calling in the correct position of the tame seal! \* S is guided to the extending the vehicle headlamp (Fig. 1 squares, the squares and # 7a and the door t test @ grams zto distal limit of u' program a <px itt io is caused to 4. subroutine .lambda.0 \* r i/o; the arm / d logs the operator operating force and / 5-y on the tabai button / pi / 1 / z-view button to join the valve altera by pressing the valve v / 4s ding compare asano, paper making' t' of the valve of the v \* of the appointments operating valve, t and clever meth tv / v \* to the '1' to turn on ??-1 to 4 and k, the correction b than 1%, is @ to 1, the ? 16-u the potential of the intermittent frame out !! incomplete kanichi heart and 1191u the petanu moo thoroughly inductor 10 distal hint w70n / i / j, hologram 11 valet of the one of the inductor /% or t, ?)2 / i when pressing the valve position of fig. 43 or the lower limit / upper limit / 1 / 1 the valve position to operate.'-limit! position ? / 1 / the fifth is program / turbine (s1o2 operator 1 + ih1-rom! a air flow field can increase the hand r 6 integrally with a 7-way browsing and j / l #! illumination in the valve, both are in the l8 button / r / f'.sub.i 1.9 no. / lower limit button. button 1 , or valve position on the limit, between the ttt.-type, at the valve opening to 1 ° palcall tsumagoi / l / l is and computer monitoring / j / glow! grams/j [view. therefore, the operated by grams/j [stolen / j, valve opening of the hologram 11. // field "f&#39; interim operation, and therefore, the signal lk. of the tank and a counter reset the task 1020, and a. r-monitoring program / 61 / j-applied, with one hand jk operation is stopped, characterized in that \*, and line 7 of the next hologram is free run j' or the age of f, and computer program. rec bus-valve-seal, is a-1-. 6ee ndp rok: 22 / 20kw lr block/co-worn, a stop / start / jp1 program / 4j is as shown in the figure, df / cw / computer control ii power! with hearts content or defect at a ?, the dbi computer device 1100 mt + ?-stop within the maximum priority starting with the glow grams / w4 starts to operate. glob bx is not shown the voltage of the power supply 4 is within the time limit down and the stop / start grams/co + h / h is d fire hook glob make a thundering sound system @governancerule // the initiator device combination to stop the 4 to 9 friends impending known t is set to a state upon restart, the program and / stop / start of the rail, ^ 4 u reset position l / 1-l is shown by throttle valve to t with tracer tv / i to vi and o governor valve av hard point vt and the analog output all it is possible to set in and m have 6 counter, that is, all of cape-like 11 .mu.the reset! 1 suspension device of the counter is set to 1 f m [start power plant-j4 disposed from all of the ij // ii f j !!! point input, and r to run the # 136 ii // s is a power plant-like/takashi lkd gii) # a computer control to align' // l1 as zero il executed. the ? shaku after, l is shown a "figure error operator panel button on the control / a / 302 / 120-lang dragon pledged rail 3, and turned on the system deh combination # 4 of the il \* l1 restart quasi-stop / start. !! i program. i !=j, and j is the demon age is shown in fig. 6 jo to shown in fig. 4 such way visual display panel to the v / 3 can tame and computer /. 4 and the auxiliary task // // l image synchronization. ginseng and shows the shun confessed. // visual j. ram descriptor 1 is a reference co and the inductor main window 112 to the window view, confessed / ii-kai comprising / 31 (fig. 1 window / age> W@: SS 11. window / control. Window 114 and the elongation Bong-II-7-next!? Tube Operational. // 20-, panel buttons as part of the ttt view? 3, L.sub.jk/visual display of the Petanu / J, 4 °) Assuming importance ginseng 7 / II / i l @ operator panel button% panel. I !=J, Se, DK-s0 and o on the computer control to catch. // o, r / l14 OVERCONFIDENCE helps you layer weight of a suitable glow worms and 7> ft: f, kl KJ), 6 m411 1d4 / f f c + s-window JJ shown in demand value is 1 is behaving in an unseemly manner tatami mat, ginseng, Ht, displayed in tr is pressed, the valve of the layer boundary level i te s ? double-glazed windows, Tzs/) has been limited in "Ichi! - in the present tatami a valve tr \* of vcf window i?, n4s \* Ky to put up with any longer! 1 load and high I press the Tata-y / 39 / negative reference # y@u-kai! Also, D-L / 140!!!! / 100 computer control device e1 any of the parameters of the actual ? or constant e \*, and on the reference window 1Ts-and its parameters window Shc tatami tz demand to display the it is. KTR # 4 attracted by swinging by a program capable of formic, 1-year-old 7 J/A button with reference to the figures, and the functioning of table Table 1 is shown in greater detail. J u J v spear W display program, C view, a block diagram of a party to J3 of FIG. 4.! and conductive portion of the visual representation, interpreting, and executing it. Fig Seki Fk plotter to t . t the petanu big scan shown in FIG. That is an analog input device ana / snow / , / the control and monitoring purposes can DIM the computer controller t K 1100, from all of the input period Ti anatase! I scanned the analog output of the pressure detector bin? Yes@ to the impact from the impact pressure, power and analog detection v Poly-SiTr: speed detector that includes variable 2 in computer input measured for surface shown in FIG. 5, narrowing down to 3/4 a valve TV Type and / governor valve GV to G 5 and pressure, Vf-axis vibration, narrowing down the speed and position of the input device. 6 /// ana four, the function of J &#39; portion 7 is made in the first analog input device /// (F) a portion of the first group of an analog input from the scanned scanning. input value is converted to, and, engineering units. DRT (computation in a predetermined required limit this value to match the input device 1, the l14 20 functions, the portion as shown in FIG. 5 automatic'.sub.1 necessary for starting the scanning of the turbine 4 consisting of analog input person T8 is, ATS, the inductor O, four. 8 analog / human T grams/converting the words 1 and 6 human T B L14 + 111 / information as the return to Da as shown in the figure, FIG. 3, the analog to the device 4 + 8 /// a block diagram of a human is shown. @ + 9 // 31 / 4, the rounding of the analog input device meter front-end time: 23 logical task is shown. // 10. is a logic output (t;

contact closing) subroutine is a subroutine called ° 1910. The LCCOM subroutine spelling correction agents may l of all the lamps and digital output state, and transmits the logic contact // 2g, 10 has a large number of scribe // contact or it therefore large level to process the output of the output of the current DG) K (computer-shaped to hold the logic LCCOM tend heavily toward subroutine / request 910, otherwise total storage required storage logical task tt / OK. In addition, LCCOM to reduce subroutine / logical task. '9 // 10 K/0, therefore the latest parameter table called supplies the LCCOM in FIG subroutine / 2910 over the first 36. Fig. as shown in the figure, and the J-BU as shown in FIG. 1. Logical Task panel // 10 / J is an button / from the valet generated inside the turbine 10 from the decision state of change, in response to signals from the M control device 1100 combination a good driving state of the state and the contact, the lamp control task t / l / Co, the traveling device, 1 pressure coco logical narrowing down the circuit breaker 2. The logic device. The logic device or the like, inter Hue chair to select the logical \*\* and the 537 in FIG. 36 with reference to the figures, the operation of the logical task ? // 10, a block diagram is shown. 5-wire from the power plant / l disposed roller contact input sub-power plant, 6-CCI7 // 7 that call the interrupt event program / order or viewed, and to trigger! / u CCI power plant&#39;8 y o then subroutine tis logical task in 9i ito is operating is referred to as "logic device by 1 ° a signal that is interpreted and executed. The logical operator task 11 // 10, also, an operator panel 10 up // butane-operated by pressing is sneering at logical task. // 10 also interrupt program. // panel as viewed j & operated by the interrupt program., 1 &! // structure analysis and l / 10 116 to operate the task panel7 // calls the task, various computing / J extending in after the determination of the control task ID / D, the control device according to the 9% of the new task/OK/10 logic requests the operation of the likelihood I !=J, and J 13, Ti or logic tasks. 1 Ito functionalities are shown in FIG. 30 is a logic obvious task// 10 shows a block diagram of logical task. // 10 / 10 DRI (? computer controller and reliability of a series of tests to determine the control the one of these tests shown in FIG. 6 Ito @ tb backup-and-wrought an analog back-up portion which is a part of the over-speed device controller in general, for the purpose of or logic tasks. // 10 W program program is another subroutine logic function of the plurality of composed of various logic is a logic, and subroutine program is running, interpreting, and executing each time it is continuously all computer device / system DEH 100 W4, adjusting the dynamic response full flexibility and to achieve the benefits of the four, the maintenance test apparatus 110 i.e. the valve-grams/test is provided, the logic flow diagram shown in FIG. 4 valve IO / 1. Test program operator of the K control on / Vah combination of many cut off around the operating parameters and the adjustment constant 1, or adapted to changing. Therefore, the computer controller 2D / 100KM, the constant of such regulation costs or re-program for the 4 and, it is possible to moderate a not essentially constant, the operator and the change of the selection; 5 to infinity, the first view and a FIG. Tx it is shown in FIG. control so as spinel. If the operator 30 or the bunnell7 //, 8: control device (computer) g) / 100, it can either be to optimize. Therefore a great flexibility and control, can be achieved in the dance. Operator 11 Further, FIG. 10 test program 1 at a valve of the operator, for the purpose of pot life training simulated state state is provided 31 as the role of or logic tasks. // 10 four-speed detector, a + 5 [t is 2g and speed detector 61 digital!. Monitoring of logical task! // 10 third double function. FIG. 11 be described in detail velocity selector + 8 speed control in S / l / AT Program / I and the end beam: the dark turbine 24 temperature the reaction pressure, the mechanical speed m on variables such as the ATS program to monitor the I // l / T date inductor inductor cycle program management program, that is, the turbine being cramped. valve cross-sectional position limit program, tri-Ti or an analog input device to incomplete tta) input is applied to the management program @ if, to turn off); - 4 / manual operation to convert the sprue, shows a flow chart of the computer control system, DI / ICH / ?0 or special functions of the turbine 10 of the BU Incomplete Task 1 I10, the logic unit computer controller the DFF! / 100), an operator of the manual braking and optimal combination with variation)! The musical control device to start the function to convert incomplete manual control, the speed control in the speed signal of the defect is included, it is not limited thereto, but the invention is not speed control the speed of the third status details in FIG ridge selector function will be described later, again, referring to FIG. 7 power network (not shown) and the turbine 10 synchronization to governor valve GV to a loss / Vt is sufficient to overcome the steam turbine 1 through 2 turbine 10. No. 1 generator breaker must be l by closing the opening of 9] power network 4, the other power generation vessels in synchronization with the electric motor, when the turbine 10 includes an electric motor 5, Tend. and 1! I follow the low pressure portion 624, damage to the computer preclude rounding 7 control device l / ?0 is, predetermined load 8 synchronization is emitted by several machine l to be consumed to a governor valve V / VT. automatically open to the 1. The electric motor of such. spinning, 11 synchronization at the time of the initial value of the first mega frit consumption 1.2 Lt incident from the figure, the keyboard, and n & 0. or turbine generator, of the rating of the is set to about 3 of 1 ° at Ganmangahara,43 as shown in FIG / 1 / + 15 load control device, the actual inductor consumption A + 6 MW the rated pressure, and narrowing down synchronization pattern and pressure generated at the time of 7, which is the ratio of acceleration or deceleration by the reactor)!-1-B, a can, the 7 the turbine diaphragm 9 y is the rated pressure or high pressure, low-pressure or narrowing somewhat Ya in any of substantially the same synchronization initial load when mw to conserve the consumption of computer system / DG-C thus !! 100f instrumentation utilized. fourth with reference again to FIG. 3 in the top of FIG. between the valve control of the previous the same banner. At that time, the speed control. the turbine power generation in a state in which several synchronization after the lower part of FIG. governor valve AV, showing the operation of the t to a Vt &#39; therefore, in the load-side speed-drive away cropping, and converts the 'G' when syncing, governor valve ov // is first to analog signal applied to it the same value. You must have the relationship described above, and a Va0, GV spg ° K on the iodine-table b 31. Again, FIG. 9 shows a control task, the role of the control device 10 U / g / load as 41 (it is not being used. taking the path of Mw, and hammer pressure feed pack. Then governor valve GV a trap. Output: Rf (umbrella) V-PO8. J" A OLOA AO8 \* G'/PE, P., d-is in the? S, and the ? governor valve position PO8, the BU 18 PD, and governor operating speed position y · 1G !?" is changed, fine gain. 5 valve @ necessary governor position PO8-GV is then governor valve governor 6 set value and the non-linear characteristic with respect to a song 4 / f / A. Therefore, PO8 8 here, i, 2) and sp + x) is 1114, the characteristics of the valve, the first lateral on 0 point, and characteristic line of the portion of the / 2-fold governor photographs represents time substituting= valve constant, + margin.4-L4 ? 1, two "two-(see1 (? L"] ml two-SPD GV8 O8 L5 (J) (P-P). 16, the circuit breaker 7 is speed control/load control, at the time of conversion to / III when closing the demand signal, 8 to increase the reference required to provide demand (main function) the value of the gauge 9 DVD by the equation is thereby obtained. This amount is ? END: 25 Mw, to increase or decrease the pressure of the initial consumption aperture when the turbine generator, by the action simulator (motivation H Konpiyuta control device 1100 # the speed control to the load side on the control panel with a smooth variation keyboard set by a Tbo is compared with a predetermined pressure signal to the control device 160 is transmitted to the computer the narrowing down of the throttle pressure is a predetermined pressure set value drops below the dye in the case of demand signal 31 view reference/get the aperture until the pressure is equal to the set value previously selected. FIG. 3 is reduced by a ratio of narrowing down the fourth dye-turbine pressure control 10 is a logical device The throttle automatic control when it is in the use position by the pressure control device to an operator or a place except. Further, the diaphragm from the pressure control loop speed, the turbine 10 is when it is in the control of the degree and the valve between the valve position signal from the narrowing governor valve control valve control dye to convert the delay, between the valve position of the vehicle will be described in detail later large load, such as a change of the contingency 1 under dynamically removed. Referring to Figure 2 fourth 16, megawatt loop feed 300. There is a block diagram of a q i t> 4 is also FIG. 7 is shown in more detail in the multiply block 101 & end of the reference value signal 5 input 1oz velocity compensation system 6 F 9 mega swirler compensation value signal 101 to the 7 and multiplication is note also that round. 10g value signal velocity compensation. Group 1 or 9 of the megawatt compensation value signal 101 one of the loss is zero output. Rather than the runaway state, since the multiplied signal difference, the use of in place of the l, l2 if FIG. 7, increase the safety of the comparison block 1090 and the carcass, a force / impact pressure.'O, including feedback logic Tk impact pressure on "4-l, 4 f shown in detail in FIG. 5. there is a hit hammer pressure feedback loop (loop) x> + Ip6 and the first number than 1! &#39;a shown in FIG. non-linearity of mw feedback loop in consideration of the valve 8 by the control device l1.D [9 Combi Iio, compatible with a setting that is selected by the operator is a turbine 10 and the generator 1 Mw / and to ensure that supplied by the logic device 6 / 1-impact pressure feedback loop used without the swing position removed from the IIC or use \* n <power, because of the nature of the digital computer, digital calculation precision without the use of an external circuit such rocking conversion is achieved. value is not consists in calculating the instantaneous, and as shown in fig. 11 proportional booting lath reset control block 106 g / 21 integral function is inserted into the hdd-if this setting at naught, control 100 in the preferred embodiment, the shirasu / proportional reset control block 1.e: that is enlarged is utilized by the cqi feedback loop, a nominal mega-watt power output value 1o speed reference 107 consisting of the feed pack loop 4i / 19 and impact pressure and the rated speed feed a flu ing'.sub.y; aa mio 4i and the number of actual turbine speed 107 il. the logic device and synchronization reference value and the rounding to the turbine demand value signal from taking the synchronization device and receiver is a device be normal automatic synchronization can be associated with automatic synchronization of the 2 device, the generator 3 / a, to synchronize to

too high or too low speed 4 to a turbine or Io is a voltage and a phase angle. however power generation f / 6 equity-h to indicate whether the computer 7 de \* la dankook university, and supplies the input pulse at a turbine 108 in response to a synchronization device dg ? h generated from the operation control program operated in accordance with the automatic synchronization of the inductor device 10' view v logic program be the turbine speed at the time of controlling the io, // a very accurate. therefore, the inductor l on the other hand, preferably after synchronization. normal will be described. dkt controller / 1 ° (computer 100 and the bin, io is + 6 in a preferred embodiment, the remote control, or 7 if it is operated, with reference to fig. 8 again, the automatic dispensing device 170 (d8) is an operational! button / 9 pushed, whereby distribution by the central end station: 26 and a remote location, such as, the process proceeds demand reference input and it is human power of the power device on the all of the total economy etsu) k based on effective load. to make a thundering sound automatic dispensing program for the flow, a diagram is the first it is shown in fig. remote data of 11h-i !=j, and on the computer and the pair, in order to have automatic automatic dispensing request distribution program is operated. now, in the ? automatic !! with reference to the figures, there is shown a flow chart the turbine of the turbine. the operation of the reformer at startup in order to come out of mourning io, and thereby, turbine life unfavorable influence, and the unnecessary time, to reduce the initial moment to the line that can be turbine 10 for connecting to the computer controller &#39;, h / 100. automatic automatic start-up program monitoring program for 8 turbine life and cycle program, i.e., // ///inductor, ato, tetrabutyl titanate, // '-to-analog converter) of the bearing, cooling agents, vibration, speed, steam temperature, and including those of the other various fields to the turbine parameter representing a number comprised 1 monitors the signal addition, the automatic start-up program io1 //// 4 411. // l, co 2 gas turbine a roar io. the risk of the temperature variation of coarse metal portion heat distribution and the like multi-compute: // i is ats variable inductor and an alarm associated with station. at program to analog conversion / l yes, ats task/i / q / u, ? beauty / 4l. information step, type inductor. through fill types a //14 on the inductor l is 8 at 8 ///in revolutions per minute. maximum deviation to control the speed of the turbine generator it is able to. // # / at8 the speed of the turbine generator 1 a preferred retention, implementation example synchronization method 3, the generator 15 to manually synchronize the inductor as shown in fig. don't! i + 4 automatic dispensing device a signal to inductor l / -5 / a thereby t8, the speed of the turbine generator 1 revolution / minute 1 and the line to hold the generator / phase difference between rung for instructing to use the simple, the operator is useful. this device bu, manually it is possible to synchronize a more common in the prior art automatic synchronization of the conventional method is to use the devices. however, kt is a turbine b / ieee / li / shot because of a high degree of accuracy to control the, this method, without using the automatic synchronization of the normal gait are synchronized ? deh exaggeration! iit computer system l / 100 from an independent power supply or remote locations in order to fifth turbine operation illustrated by the flow diagram of fig. 7 remotely transmits the logic program is provided. keep-deh, a device 1100, to the preferred embodiment of the rotating method is a available) eh4 @ control device of the above-mentioned computer # automatic synchronization of the automatic dispensing device external device, an external computer, or deh is put into practice in the controller automatic activation device, placed under the control of the turbine operator, which method is allowed, and special between desired it has the ability to filter the panel to select the task// (h / 2 is good! the operator by the computer controller / 100a / h / t operator panel button' button pressed on the operator panel button 9 in response to the first lts1 and the i o t a factor. now, referring to fig. 2, the panel-task/u3 // interaction is shown in more detail in de 10, 4. push button led diode matrix- (5 interrupt), the output generated by the panel 6 through a combination of l / reprogramming! interrupt 14 to work ram (step s224 / 9 / diode co-network 7 and are decrypted at the panel the panel interrupt program. // /// & task to operate the panel by co, it ../// easy task is rub against, or an operation, the logical row, // 10 1, or is instructed, the visual display to a task/life/3, ? is required to perform the task, and fig. 32, the panel 3 is a block diagram III board, as shown in equation (24) o-s-l yes control task shown in detail in fig2, 5. the computer-program apparatus of&#39;-analog input device control task // yes / 4, // -t / l, 7 auxiliary synchronization task, the event interrupt 8 grams order and a u11 / l logical task 10 and the interconnect 9, the fifth control task: fig. 1 is a ito-end: a control task 27-yes. // / 4, an analog input device event interrupt i / u-order hologram data from four receiving inductor, and logical task oil is that it is // /// 10 and the auxiliary synchronization tasks run bu to "\$" is controlled via a suitable receiver is making a thundering sound when the narrowing down, the control task 10 is a valve 10 co-tv and tv / governor valve g-g output v / vf, to calculate the gh l d computer controlled equipment control task, in a preferred embodiment, wolfberry gh, amount control of the three states of state. under manually applied to the here-g' governor valve, v / v / vt and the valve t-t narrowing down control of the preparing vi is automatic state a control apparatus and a control computer manually by dir track is brought into position automatic control state, the operator state dare here, governor valve gv-down /> Vf and the valve TV / 41 /t Figure 11 entering from the keyboard tbo demand in response to a signal by the D [i, a ? computer controller is caused to position the control state of the first state Dare, remote auto here, governor valve GV-? / Vr and V / I narrow down valve T-TV is an evening of 1-automatic state automatically, but is caused to position k 2 TB / 3 / 41 / or automatic synchronization on demand value P & ID or automatic dispensing device 4 for setting a 5 on. Now, A in Fig. 36 and the j With reference to the figures, in the valve position, the limit function L sprue y 200. FIG. 7 is shown in detail the valve position l sub-routine not limit function. j0 of the turbine generator and the control state of the speed, which run on both. speed control signal is 0 (V valve position PO8 limit function L) / j, controlled by the limit? inductor 19 is limited by the function u as well as! ? the governor speed signal (G) signal, the Vpos drop limit amount 3 and the function I is lowered IC card III therefore valve on the subroutine at the limit function 1930 turbine 10 + 7 to a predetermined value of the steam flow through the ability to limit the any operator.! 8 provides an a, murmur, boot the test function in FIG. 0 by a valve / IF U R) I the initiator in combination control task 10 generated in the valve position, showing the interaction of the control valve 1. function on the line in order to test the turbine generator cabinet is used with the valve 94 contingency number / 41 3 in FIG. are shown in the flow diagram, the valve concerned with automatic control to contingency-like ? therefore the subroutine 6 l-evening. An example of a HDD controller / 100 ° convenience store requested by the refiner to a Galois / Vt respectively valve GV and the position of the gravel town with a straight-variation FIG2 transformer L V] not detected actual TI C Thus valve position of. "A mismatch to match the position of the ejected position, the actual bu agitation with the Tt, the control shown in t4 H-seat panel keyboard 60 which is set on the state exceeds a predetermined value, if the lamp /? This state to the operator, 4 & mismatch to alert the normal operation, the state (s descriptor 1 966, then DRH blink briefly, and the valve is the computer controller input command, a step disappears. function after caught up with the valve 944, the contingency. An analog back-up subroutine / manual device 10 is Ld / 4 (FIG. 6) the control device EH combination valve 2 track an analog output to alert the situation that has not operator having the features of the first 32 to the luck of Bereku, therefore, automatic 4-? rolling-like in a manual operation from the state 5 can be upset translations may be WL, an alert. Non-tracking of the chestnut. Kan lamp @ hand superintendent / E: panel: 4. // operating button 30 emits light. 9. The embodiments with each band or tracking mismatch. J12, TV, strange valve TV2, T / 7, r / l and V, each 0' governor valve GV Vt l to individually for a 1 ? boogie boards, it can be constant or non-?. ? is usually valve band is set to 1% to 2&#39;-valve, 3 " &#39; contingency-function 6 = y &#39;is down, vibration arms 14 on human power, an analog device: # 14 ? 7 /// 5 Now, the third response to? H speed with reference to the figures and the needle 8, a block diagram of a computing-interface. Counting and + 9digital shaping circuit 10E-ndp Yes: 28, very accurate signal digitally generated. counting time: the digital-molding and the one path. The computer system in the form of RH sagittal value D # on the magnetic pickup instrumentation bonds, molding and passing data. The speed signal of the counting circuit with high accuracy, the first-generated by analog processing circuit/co-oyster yes. Third BU signal is an analog processing circuit l inductor management instrumentation generated by two Yes, and high-precision analog processing circuit with a signal from the co-TI u v ul, analog / digital conversion / Li is transmitted to the digital-molding and counting circuit from Lo speed Yes channel interrupt program 5 digital signal is a honey pots 201 through the u-speed channel 020 RAM decryption is passed through the decryption program 20, speed channel at co-UR output amount ? is indicated by g is about to 76 to 1500 rev / min., 6 low range, on the other hand progress value I to the FINFET of about 11 tbo o to soot revolutions per minute used in the variation between the high reliable seed value in a range of u0 / 4 analog / digital converter, an analog processing circuit 20 and analog processing circuit/co-management instrumentation l of the high stage Yes's analog signal input device 121 analog /// 2 in, and it is next, the speed selection program 202, can be used to 3 equivalents--a speed phase and it supplies values for speed selection program, the digital value 4.20, and 4. Coco four stages of 5 both analog or compensate for is accurate. 6 during one of the non to determine whether there is a match in the daisy talc of the high stage 7 speed values and 8 analog analog speed speed value to the management administrative speed value l, compared to the value speed control to be -9 Bu general sufficiently is not accurate. Thus, rate selection gate, U-RAM. Q, 2-speed, 1 the degree values are not equal, the high stage if 2 none of them is accurate, determine whether to use the rounding control, 3 Speed value. Counting and .theta..sub digital shaping circuit u, from digital control speed of the level, it is sufficiently accurate for the purpose of it was found to be 5 if W 810 746 is used as a reference value of the analog processing circuit 1 from the high stage 7.20? value of the analog speed If the

sagittal ? 8 b speed value is accurate, the i control purposes if rounding. However, one of the high-stage 2 + 1 spaced apart signal i41 for 1! JI on the control panel lamp is suitable for a superintendent make a thundering sound to alert the operator of this fact iso. analog and digital speed high stage high stage, there is no both reliability and if the computer controller DB)! / 100 is wide speed control range when it is in the fade-shaped W I [manual control. However, if the load control turbine When it is in the LO is, K / 4 degrees computer controller 100 is not @, and feedback loop remains intact koji upset with automatic speed control feedback loop. there is a flow diagram of a selection subroutine for the first k and the 40B as shown in FIG. &#39;; / speed / speed, load, a change in load of the change rate, and the command value l rate input from various sources control device) (computer 2 and one of the evening, guided to the other of the source from the source 3 is transmitted without these upset will its own sources, each of the independent operating state 4, and control 5 to 10 co is a task or signal .theta, command signal Bu ratio.--? subjected. CO0 is the input, the control task (Ordinance of the Lo signal on the wrong pair of shoes in response to the throttle valve 7, and finally to T 1. And TV / V4) V / mosquitoes banner to I. valve vt. both one or the other of the RUI to run a ? and generates an output device 10'/turbine speed, is opened, and is the next operation control when it is in the state is selected, 21 automatic synchronization state ... the speed command, turbine speed reference length 3 beauty of regulating and synchronize the turbine 10 at the same speed and phase 4 - O4 to move in the ring-shaped oil turbine. 5 i.e. the automatic start-up program contact input state ... pin-speed ratio 7-speed command and supplies the operator state ... the first 8? automatic shown on the control panel 9 is Tt 9 keyboard from end 29 the command: the percentage of speed and speed change state ... q@ D computer maintenance tests system-Gh vibration device or mounting device / 100 as pseudo training device while it is being used in, FIG. 11 Tg of the operator control panel from the keyboard on the speed command and the speed change ratio is placed by a manual operator, well if the speed command and the speed tracking state ... combi meter two rate of change-system HDD Control device 1100, and a operator internally calculated control not the automatic conversion of the rocking around the state shown in FIG. 6 in preparation for such a manual tracking an analog back-up device 10 / It is set to "@ / 7 is cut off the closed state control turbine / ? is when it is in level the next operation state is selected, that is, narrowing down ... load pressure predetermined minimum limit state is held in a predetermined state occurs, as long as a predetermined value turbine determined reference load is reduced to reduce the accident state ... the randomness. Scheduled to key 1, the reference load condition occurs is reduced a predetermined ratio 2 automatic dispensing device. 31-contingency condition ... bar 4 of the operator control on automatic dispensing device 0 is AD8-push button 11 when it is automatic dispensing device 5 input pulse is supplied from the turbine 6 is automatic dispensing device 7 and, to adjust the reference load command load 8 ... load even automatic state command and the operator. FIG. 11 negative wagon is on the control panel. enters from the keyboard, I / 140 ... D, computer maintenance test state control device, RH / 100 2 of the simulated device or to the ?-ray device and while it is used in 3 the load instruction and the load factor 4 is the first of the control panel of the keyboard / Fig. 1 / 140, 6 .. The stitchless tracking state counter-load command and manually load factor is .. inside the U / D control device RH-10D IO / 4 IIC backup device 1 is set so as to track the second selection operating state with reference to the figures, a block diagram illustrating a function 2030 is shown. // from the power plant @ is disposed roller contact input the input power generation for power plant line wiring in order to scan the CCI // event interrupt subroutine call depth! 0 grams/Order/co-operates the four inductor ATS1 D8 / I1 \*, l, k 'l.sub.l'.sub.IQ and the automatic synchronization of the device / / classification for the state, such as the push button and the panel, and then l / call task/co-related to logical task logic state in order to calculate the Ti / Io panel interrupt program to call / 3, to operate the make a thundering sound logical task control task 1 Ito is 1020 for selecting the operating state of the program is called A / rounding A and FIG. 47B selection operation flow diagram of the logic device is shown. The road is, after a selection associated with co-?, as an example of automatic or operator state transform testing state is upset rocking the governor valve GV-tei/GV for the position of the output signal, and a computer operator state by comparing the output by the transmission, 2) is achieved. In 3, the output of the transmitted to the error between its output and the predetermined non-band (K8) with BTR GH 4 until the stop any transmission computer controller 5. The swing the governor 6 ?V-valve G and the throttle valve TV of one control state to 7, the output of the 8-state to control the same parameters as the same output from the other output by comparing a computer controller, 9D / 100EH, achieved by in FIGS. 7A and FIG. 11!! I / F3, the flowchart of FIG. complete image t &#39;;? apparatus, analog control, 2 is converted analog to variant 3 switching parameter output parameter output by continuously tracking, it is necessary to cry, the tracking method,, e is continuously performed if, complex, and the need for hardware and 6, the method is expensive and cumbersome, while, it is 7 / 10DBH computer controller such as back-end s overlap, a digital output one of the rose 9 meter to be equal to the such as the conversion\_only at the time of e: 30 Therefore, it is necessary to operation. A major economic resistance is achieved. Now referring to the FIGURE, the first 6-speed if / block diagram of the operation of load reference function is shown. The circuit breaker of the first four-ku, 0-100. FIG. 10 is a determining 101 the speed of 6j / Fig. 60 and the same load reference function 10u in FIG. 6 speed control assistance device 109 a software co-u in FIG. 7, of the comparison block 101, and the proportional plus speed reference 1016 reset control block 55730. FIG. 6 t j correspond to multi-software load control assistance device of FIG. 7 U OV enlarged the rated speed value inductor Lo-speed t f ginseng, turbine 6, Comparative proportion probe 107t, control block, poke / PHOTO1 addition block 10, the comparison block 121 mg of lycium (5) proportional-plus 10 10i, the reset control four-poke & multiplication block 101, the comparison block 1090, and the impact pressure proportional plus input 10 and 10, Poke deco reset control corresponds to the four-speed-load reference 1040 / according to the state of the function, and automatic identification device J, L, and the operator to the ATS // @ U-shaped / at manually automatic tracking state device 20 schematically showing! !/training ginseng, I6, automatic dispensing device 20 device 10, or decrease the load 20 "t902 contingency policy control state by each of these selection 302 in order to adapt to the command to the selected percentage speed / load function for 4, to increase the reference 1060 N / reference form 5, as the number of fourth-time of FIG. 3 6, 4 shown. FIG. 7 is essentially to Fig. 7, Fig. 8 to 1.1, the combination of the additional program-maintenance operation state, the path of the simulated, the simulated speed of the speed, to generate a signal. signal, as described above, speed, first-order lag to transform function. a feedback, by K2 is therefore generated in the turbine generator 14, to approximate the initial response, second 6JAC IN A diagram of FIG. 4j, as shown in function block diagram, the previous control. a negative line 6 as shown in FIG. 7, extension of a load control of FIG. 13, causes the speed loop subroutine and function diagram of proportional control + 7 + 8 + 9 combined with the fourth-bu of Figure 41m, as shown in 0-100.) valve control throttle valve narrowing down to function to narrow down the TV to the TV / a analog signal values to calculate the valve. 6. A first-a to calculate the position at all times governor valve output function a governor valve control, shows a block diagram of a turbine generator, millions of dollars in damage, without imposing a combination control device @ DEH, // 'in order to skilled in the operation of the operator, Fig. 6 to the simulated speed control subroutine 2 / 10, it is formed in the same manner as the simulated load control subroutine in the /// device power of the turbine generator bu is formed in order of the simulated first A / A flow diagram of the select one of the five operating state state to another state switching function for swing speed tracking co without a. 4-a in the figure, ,, the load is a load control function, tracking CO / CO-manually tracking down to form a governor valve control function. FIG. 6 in FIG. shows a flow diagram of a flow diagram of co-bu i path valve control diaphragm oo is in conflict (governor valve control conversions to smooth, and the upset and vice versa. 2102 @ 1 JIS G governor valve A8 bias integrator becomes zero, on the VAI how to test whether or not has reached a governor valve integral conductive bias VB is zero 42G DG ISA system control computer 3 until it reaches around the flit 100 by the governor to be waiting for the a 4-down from the valve control valve control, upset transform is defined different 5 and opposite. shown in FIG. 6 first to the data link is in the Kyushu CPH DIC / 100Hr computer @ to the power plant control device command device, such as other computers. The preferred embodiment, providing communication to the communication device of the power plant. Other computer command is initiated by 1 ° DIN (or the data link is up, sends the information to the DR, waits for a request to link operation. H = any position of odor, one core, and, be determined set value to change the number of line. One day, a dance. start-up memory of the U link l, 6 and or a pre-determined number of words regarding changed instruction 7 is information that layer is the data link transmission and the next S-bit control receiver is used for + 9END: 31DA T00 JA, // 10 10. Data transmission state T00 / SP /, // 10, 7B1 and the setting value 000 transmission state ACK / D & Language, Seung-Na, K1001-2010 / non-approval-? !! facts and Word 0000 KN / Q0, verification ECU01. TX@ D I) I do ooo tt, 11), 71. the end of the ST information (X100, .theta.0 10-t · Dg from C8F) the answer to the question of 10010 / 8. total defect 1 repdigit verification 3A / F1001, the differential configuration-address // defect 8. Step 100 // 1) 0 0.9 g 3. setting value for starting the defect, complete one transfer word indicates the number of the transmission core in the ?-address is used by the figure, not the number of ordinal, g bits in the next symbol table address. The first half of full-core full address of the RRF core half of the number of words W / WD8 transmission information to be transmitted, g-co-verification of C-mute-coated with a reduced total sum of data transfer of all it is the sum of the number of bits of binary data link 2 the hardware (on the information that is producing a loud noise when operate simultaneously. command device 3 is transmitted from the power plant / power

plant 4 Program/co-interrupt command is immediately used in the computer. - - Bell telephone company. 6. 110 available through the transmission device is in the Kyushu. data transfer to order. // event interrupt program, program K co-inductor any interrupt program / WIFI / J. 5 inductor 21 is the end collector 170, digital-J, J-oil, for example, ?, 7 months 5 months. At the "9 Months! Don't i--90, E "1. Memory 6 data, bound u / II in the input buffer memory data word to the left and right are taken to move in, and thereby through the central processing unit in J / J receiving verification is compared to the sum sedimentary noodles ye in total space factor Bu. To generate verification DEH-filtered off computer control data from the sum of the power plant is transmitted through command verification murmur and Digital IO Mykonos view around the octopus bu stirred at both go to sleep, it is meter if the I is found, if the interrupt 9 occurs, and the time signal 75.f error is fed, the control to indicate no longer returned does not work. i or another power plant command requesting computer for responses. Insert the same send information, be a program suitable for receiving the cutting information request, the data again take-bound moving image program. This program is caused to PO / high pressure rotor of the 1-stage temperature region kozue blooming of its surroundings, on the basis of the meter 1! and current operates to periodically heat conversion coefficient, the temperature differentiating BU, and the rotor the rotor temperature strain is "Alternatively, such rotor temperature calculated continuously at least 2 hours. If not, i.e. if the program is running and Kyushu Kyushu? Or related to detectors are used if the has. ATS-like calyx and control can not enter into the pipe 2, it is possible only if the science. He analog signal (A / F) / peripheral Tsutomu converter is used, if not a Galley. -The actual rotor stress (one stage of gold! 411 is initiated by the device is also{cs6}f if not calculated cycle operation, 7 in order to start the variable value is used in the program will become an error. If this tooth and one rotation (Minato: 11) If it is in the "Full yield O heat indicator is the Buddhist commandments. ?? Started heat absorbing, M1 151i do. 6 °.!" pictmap lamprey heat ? yield calculation program (v) valve that is used in front of the 1R Seki high pressure and the intermediate pressure once metal temperature temperature of the current bat metal Gold 11K is set equal to the gear rotation, and this device can occur only when it is in the calculation of the latest processing. gold heat absorbing initial JK ICQ, since based on the AV value the device is seen to encourage more openness in 17, until the temperature of the 1 does not change. If the device is not in the "gear rotation = END: 32 heat transform coefficients to be used to calculate the actual speed / Fin is Fk is set equal to 0. Otherwise, it assembled the ridge N-turbine start-up procedure and the cold or heat, through the first stage f intended gold! 4 temperature. determining if the IH heat conversion f computed as a function of the speed, the rated speed higher than the control state of the hawk if reaches the conventional (FIG. 1). Once--breaker is closed, at the time I &#39;to, H is a number of 5 minutes i [4 is increased to be concealed ?No champion vessels, reaches a speed and load-like thermal coefficient calculation is as follows.-/1, X-1 (/ X / 000 + N)" a non-RT OS load PIJ + (I-JX ? roller ? counting time) rotor is the first-stage unit 1f i temperature steam temperature, rotor current heat metal temperature of transform coefficients, and (1) Intermittent rotor! is calculated as the value of stress line current and past-Ti-hm has been analysis of the rotor, to a program used by the 1 O is stored in the memory (the surface temperature of the rotor determined by volume average) 2, if the Co / co-Bu is starting operation after 3 hours or more ni kansuru if @ to the rotor 4 is invalid, a calculation is considered to be the temperature of the rotor r [51] contact-number? 1 (rotor 1, the strain of the cliff Tsuban, and limit6 ratio it is margin exceeds the limit, if 7 was found printed.-Ding 8 rotor 89 surface A1 · A volume average strain-rotor, rotor.-f (T, S), this program is completed in the next stage, ? the main binder. 14 1 ° constant) a first stage I & steam temperature Ts, o, v, calculated transform coefficients (8) a) a magnetohydrodynamic i) + (9b) surface temperature C@@ volume average) I strain a) 7) rotor of the rotor stored and updated every minute of the volume average value b) k / j surface of the rotor (volume average) per minute acid precipitation / Po co-j (i expected program, the bolts 7 steam chamber make sound and differential calculation and temperature differential expansion of the lunge management this both programs are expected of the chamber of the steam chamber ll1 i111 in order to calculate the degree of difference between every minute. In fact, it operates the calling machine and differential image deployment best-Bu down imperial swerve from the governor to determine Po is compared with the limit." -, wherein the indicator is a partially unsaturated, this program the first interlaced" when the operation of the calculation of the expected temperature differential in order to not be used. Ah a trap the and a program is started, shows the finger. ° by setting the same manner as in pi completed." in this part of the program used in the medium at least a pair of l is used, 4A operation when not strange and information communication, in order to avoid indicator done to set the 1 minutes of this program! interpolation method. The storage temperature difference and 1 minute from those previously stored in the period for "33 steam chamber wall temperature to derive the molecular differential calculation of r. This 'f 1, 4'-blue rj (T + t). ' Tj &#39;. j 1 outlet wall to be expected temperature difference between the heating / cooling coater" limit of speed and load and / 10. 1. the holding of the metal to be expected status request is generated by holding" indicator, pictmap" + · ? ? ? 0 staff. 4 · 1-pull limit alarm and branch without match and thus made different program P by rotation Q2. 41 input is 3 power generation end: a 4 alarm limits don't trip if input is exceeds the limit, "16 difference display indicator is operated bu trip, and c without pulling to start the operation. I&#39;8&#39;7j, one end rod; p <alarm when exceeding 1q thoroughly, one end: 33 different operation is performed. if it is short bu rotor difference display of "heat transfer coefficient increase rate due to the increase of the indicator 1 in order to increase the accelerating" set to 1 ". therefore, rather ? rotor is heated than the cause of not to generate an alarm if the rotor is long &#39;to the display speed of the difference between the instruction 42 is operated ?" as a result, the speed or the load holding step." 1, 1, exceeds the limit difference display indicator trip" is set, and the tripping operation is started. if it is in the turbine gear rotation and the turbine will prevent rotation gear 579 rotated away from the deployment indicator for the differential g" states are set by the long short rotor in the figure, the rotor and relative position and with reference to the elements of the thrust bearing and a turbine 1 generator 1 differential governor zama end" and non-contact detector. end" is shown. in relation to the position detector and an axial scale and management recording device is shown. the pointer display operation of fig. 3 scale 1 guideline skillful management record within the limit in relation to the operation of the trip. alarm and co-2 blog ram3po is completed in main stages of 4 is as follows. 51 6a, to calculate the j for the steam chamber temperature molecular content of 7 mi i follow! 2j for the high pressure and the intermediate pressure-molecular (flange) scene. min .? a degree: 10-0 compared with limit values, an unexpected high pressure! and the intermediate pressure (7 la guernsey, 12b bolt) 11, steam temperature differential differential governor chamber wall, 3c, one end of the 6 4 9 802 6 7 alarm operation performed excess speed generator end short one long, excess load retention 8 alarm 1 j / 1 j / 9) one speed load retention of swinging the shorter or longer spit-turbine trip one end short one party a governor excess acceleration exceeds alarm a long tri-speed / load holding a long lug or turbine rotation ! ° p drip request program 1ii j [oj away from this reviewer rotating all of the bat in the arms to hold the shape of the vapor and the metal is matched in the temperature of the brunt ii in order to obtain the communication information allowable operator mismatch, a user utilizes the program, even if the device murmur gear rotating et al., at that time, only operate to the minimum allowable pressure generated steam, the steam temperature is narrowing down&#39;i l [actual aperture (tbt) 8 &#39;is matched with the lower t w) to avoid condensation vapor t8 required minimum allowed t is printed out with respect to time t bt is too high, the rotor stfi must not decrease small. as described above will be the \ meshed state is automatically rotation gear rotation of hope ministry prevents the valve is actually nox as a function of pressure temperature and its temperature when you open, the computer may, to assess the degree of expectation or first steam and expected! 2 gold ii k14 between the temperature expected temperature mismatch 3. if matched, this mismatch exceeds limit of 4 special" field, the first stage steam within the limits, once, and it down the internal state 5 is adjusted close in sixth gear to rotate as soon as away from the recuperator of communication information. will know: 8-announced another program, which is matched by the following conditions. a gear to rotate away from. ll-1 (! circle program must be co 1 ? 2po and the generator 802 (governor), 3 deployment to end 4, 5 rotor eccentricity p04 differential current steam chamber wall conductive layer 520&#39; arc current variation minutes governor 16p base toru iso, the temperature and pressure 2 ? stearate "1 ° oy pop lubricating oil temperature pot from the cooling unit 8 cooling medium 9 generator and the plo exciter rotor end steam and metal temperature: 42-low pressure low-pressure exhaust pressure) 10 exhaust hood, drain valve pio temperature state in the table above, el (the state in which fluid pressure p / j and the common indicator is set the alarm 41. the rotor surface po of the thermal stress (corner) is a-po / @ is calculated by the average differential surface-to-volume, this is [v proportional to acceleration is a parameter that is selected to determine the current value, by comparing the previous value, the program, over-type rotor is subjected to find bu @ embedded, and forward to the 3' and the l obtained in the ?-shin extrapolation is also calculated, and a cough and huh 8 compared to the asan medical center, the turbine is rotated from the gear, and the latch is 1 hour or more around the driving cycle program, we then proceed. if that is, l1 phase rotor (average) 3 molecular surface-to-volume to calculate a temperature holds. turbine speed decreasing or increasing the cycle program po 1 vessel, is an instruction for the turbine is set, and if the gear rotation in the lateral has been kicked latch is a periodic ? image forming program 2 hours if not 4 or more, we then proceed. in other words, \* 5 61, @ 1-stage to calculate the celebrate achievements have diarrhea denitrification steam temperature 10. stores the value of the latest to date is the

first v 8 & yu steam temperature change rate is 30. at the time, and / turbine speed is more than 600 revolutions / ° min, 9 large po2. if the velocity by the holding as follows. if the speed or load be negative, 3 is required, "1 rotor stress increase rate 1 ° 14 &#39;indicator" to use load is increased, and the rotor is heated and force "166 · l extending 1 ° for moving the rotor u load reduction latent expected (table b one temperature ii facing each other volume average) fe is indicated by .theta. or less, the limit of the current difference is less than 90% of the same eye field in fig. 1 load is increased, the rotor u cold load is reduced. the rotor is caused to current (? . surface at one limit of the volume average) temperature of less than or equal to 90 l-shaped kettle, ?. speed is expected an electric motor is cold, is limited to 10% or less of the shoulder, and the current limit of less than 90% of the bu shi. in the moving several l-speed-of-like ? stuttering, expected to further fan for hot water boundary: q104 or less, and the off current layer 90% or less limited. if the speed as the rate of decrease (or negative # 1" is requiring the reduction rate instruction rotor stress (: 11j ( &#39;: 15t / load (increase! haji the rotor is heated load is reduced, which are co-rotor, @ of the cold-shaped rotor 13 is heated being reapd the expected difference between the i and kyushu limit the difference between the actual paper making adequate field of 5% or less machine or limit 7 expected to deprecate self and praise the listener device g 9% or more. finally, the following remaining operation, f / 6, ?! l load retention retention" is required, 1 rotor 2 stress to 1f. yoo indicator for l load is increased, the rotor 43 is heated. 1 load is reduced, cold rolling child!!!. and the current temperature t5 and i 1) of the vertical and horizontal boundaries byun eye is greater than 6 to 1 expected to put out-1b) @ dokata, and d. size than the limit bu (1q + 7 of the difference between the eye!.. the g is greater than the pos, and the dragon (1 moving on a predetermined in accordance with the ? worry about winning favor this program 2.) 11 4 and the \* yi step transport number by resetting the kettle on the peripheral end instruction 42 to turbine speed is a 6'o if rev / min or less, it is to match the eccentricity of the eccentricity is, if it is less, 7 alarm limit high indicator in the asan medical center is reset, the program is completed. otherwise, it will print the high &#39;4 female eccentricity mind end: 35 to set the rate indicator if the turbine speed is y rotation / min or more, if the turbine speed to set as a function of line alarm limits. il0 begins to 10 revolutions / min or less, the moving limit of quick configuration report from a2, .theta.r (mils), revolutions / minute or more 3 u .theta.o, it is 11m0 / mill), 7 + (z 4i will be co-rev / min and 32 rev / rotation amount, the vibration speed of the time signal of the lii. all of the combi vibration input to 2 is i4 with the same number. this is the vibration input by a loop, each loop of each bearing number. in accordance with the number j, as referred to by the view one representative of the input of the input is 4. in other words, vibration 5111) is equal to 1. (20 mils or more / if the trip is required. each input of the vibration value to a good table, which is used for one or more of the inputs are simultaneously when the loop \*\* is set separate each input, in order to correct the vibration speed of the suction holding or requesting 4 degrees. iif ii variation of different stages. therefore, it is necessary to priority priority fast up to decreasing state of f, the following reference 2, and the holding state at the third shape good command of is increased 3-like 11. thus, the holding or increase the state other vibration input before the request by the vehicle headlamp in the embodiment shown, is always with the method described above 5-m, 6 with respect to the by applying the following each bearing is achieved.; (c ! 7-speed rolling, n (i / 7)) vibration operation 8, vi with respect to b (u) <2 all of the n-vib" to request no lip. jt): 2-y ? 4100. co-vib" o alarm, a <n'.sub.1 x41 s2moo ovr b>o-o (x> Markov + x-mo> g, 3200-B, i.sub.@) Q / ? each report, this program is vibration input to the next scan to the 3m m \* @' report is generated via a ready-like foot without worry. 4 IIf both report-like order of the ripple and noise is input, 5 are either a 6 constant occurs in the case of anxiety, M, in order to avoid reduced report state. Little seven reduced or increased state is pre-set in the program, and if the blade speed of 9 degree is not held in the resonance range to ensure that this be the case if the programs:-detector. If the counter to soul gunjima = 1B" (C bearing 7 minutes for the program for the mobile moving ic12 the current value (VI B). ? store processing continues to run at 30.6 mass, 1 minute: Lf4 that is interpreted and executed (V-Ib), (VIB), IBL. V-V IB) after 5 minutes, if the n I expected to do an imperial r as follows. a.1ij (VRB) (VIB) + t-a-Q + (B) + (Vi (Vi x 5 / I-B). Moshiku VIB) +, 2) lip if [auction speed is 200 rev / min, also lay-J, is to be VI if B) + trip limit, (VIB). The name of the distribution in the horizontal direction. currently observed, meshing straight again above processing is returned bite into IB <3, ff v if the lesser curvature, or report state until it is reset, the program j minutes after the latest (viib). calculation, (vib) +, and viib-o and will.-x minutes hundred revolutions per minute as speed increase is required is 75 minutes, s + 1 constant winning favor, is reduced to the second speed change. " &#39;" to the denitrification speed reference program "po-by equalizing the vibration velocity of the falcon 4 men" is made. we then divides the degree 5 ° g&#39;" is h-level, 6-like men say yu to the 6-? 111 feet/minute 200 times in the bath heat transfer 7j is reduced or o to 70 801 245 b9 end 67: the 361-hundred speed reference" stage, the revolutions per minute only, reduced or increased speed reference 1 non-rounding the allowable vibration change", 1 &#39;indicator is turbine speed speed reference current-1" only be reset program p, the temperature difference between the steam chamber walls a, in order to avoid extreme limit to maintain application-hei must be high pressure or intermediate pressure turbine pressure-?. of the base and the cover, the temperature sensor @: monitoring a tc (i-y') is a difference of more than oo / shows the presence of water, in this apparatus, in order to avoid this trip more information. avoid the steam chamber of the cylindrical single casing porto flange (device), and the base of the cylindrical metal mold way bar scale on the base cover-alarm if the temperature difference is the presence of trout to view if the water-trip is required. 2 °, the bus arm, four field to google:/@a (nars compared with the outer wall both steam - ii) m-l direct-b (volts) difference between the flange (cover-base metal temperature lc) temperature 22 outer cylindrical indicator is set as follows. 5a if the temperature, if the derivative is 4 speed limit on the to hold the outer cylindrical flange base metal also lay-la b) temperature of is 100 or more, a. a 0, and the load is equal to or less instantly. good command of the outlet, and the valve is opened. if the denial to the ats .. program p17, the speed control operation program. i don't. der, ats2, when it is controlled to 1 ° dth to control ch used by the program and an dii li. the request is set speed. in addition, the acceleration rate is allowed by other programs, a set matching is selected by 16 other trip state required by a"-7'8, 8, reject the program step (vibration), a metal thermal trip (po2), trip (co), differential expansion, by bare metal 20 thermal trip (par) in the table below, it is further s one of the hologram and the ats, deny the differential detector (p / l) co-deployment? first stage metal portion 1i (p / j) j degree detecting first stage steam temperature to! (p / j) reheat steam temperature (p / j) 5&#39; vibration detector, and adjacent, the higher the vibration detector sha is higher, or alarm state (alarm) 13) &#39;also limit or more of the at least one bearing vibration value and 47, in this apparatus is a line, and is connected to the turbine speed is, has not changed (turbine is acceleration or deceleration) generated if + f, holding the communication flow diagram of i1. 1x@y represented by" and " &#39; blade does not enter the danger area that the capsule is guaranteed. turbine blade hologram resonance speed, if the speed determined from the resonance region bu fil is reduced to a lower value from the same cause a new speed occurs. another reference reference change to avoid a requirement for different rounding, this program good to advance through the allowable vibration rate of "non-reference change" is set. ts 5 may be performed in a condition of the lj-deh l by this program or a desired call by speed change in order to satisfy the 7 6 this request will reference when they approach within ± 70 rev / min, (8 immediately to a new speed. if so) change of non-change" in the allowable vibration velocity indicator; to bok. is enabled by a 1 ° ifl. po7, referring to fig vibration of the connector (a), 2 is reset, the moving alarm +. by other programs or signal, indicator or a new scanned signal is (to determine the type of information to be printed; rounding.) is set. next is scanned, 6 indicator it is a table of 1 ? 18 holding request program instructions po po co + 9co in a metallic state holding an unexpected speed differential: deployment end 37i rotor stress poj poi holding retention rate high first step portion j eccentricity degree po poj bearing holding request in a metallic state at high temperature p po moneys ot limit limit air-p@p back of hydrogen // 1 minute retention rate expected antifungal deployment if the first stage steam temperature detector is lowered, the rotor stress requires the retention of information. for stopping the blade does not remain on the turbine 3&#39; resonance speed, if the speed of retention is required i' (i.e. 1-speed holding the program"), and five indicator 2 of the description of the following po3, /-2-flow diagram of (0), referring to the connector in a state in which ? turbine speed (i.e., open) and zan blade does not remain in the resonance of the vibrating holding is required when the speed other than the vehicle speed information indicating the retention of luck-cap output speed holding) brazing from @! instantaneously criteria" request" 1 equal to 1. good to be achieved. it is strange resonance frequency range of the 2 blade, 5 was tb, the process proceeds to the turbine is therethrough. if the acceleration order 4 (p / j) prior to glow in the hologram, of the following speed reference, the high toward the 6 downward. 7 keep accelerating indefinitely if the speed and holding is required, the first stage 8 steam temperature detector is not dropped the rotation program if the child po-tei is a reference acceleration response mosquitoes rate table in accordance with one step 1 ° every 3 minutes is the maximum percentage of the 1 lower reveled in the current acceleration factor by one level in 1 ° reduced or increased. differential current or expected development every 5 minutes, the first stage i. the maximum acceleration rate. 1 ° at a rate increases the reference index l to 9, 6 is represented by the formula is within the tolerance limit acceleration rate change is executed. if the request i7 thus, the current change ratio ? huh yong-over 18 percent limit if the new request and the phase information will not be transmitted once is selected, the ratio, d [du / request acceleration sequence program p, t the target speed set by the reference is equal to the 68th of ip address a of the connector (f), is achieved

by paper making jumping over a connector cc) back to, we probably turbine-like, retention rate, and if it is in the load control to print the relevant information, it will be noted that this program is p-gronmark hologram and the outside of the lubricating oil temperature, the cooling device 71j in the metal temperature, and to monitor the header pressure bearing oil cooler of oil from one of the low-bound gunjima different and limits are used if the speed or turbine is operating load (l), high-like a pair of paper making! limits are used. however, if it is in the turbine is accelerated, oil temperature does not increase, thus, if an oil temperature is equal to or less than the lower limit if the turbine t is accelerating, whatever operation it is not necessary to let out a roar of bereku request, all of the bearing and the thrust bearing metal temperature limit is checked against the two bearing metal temperature 6.2 if any of the 99c, 32f) (10 exceeds a speed indicator is po7 or program 4 to request the a load retention is used to 5 rounding of these any 6 temperature c (3f) of coco lo it exceeds 7 occurs.-trip request bare oil. oil pressure continuously monitored, it is unchanged. the device is write-rotation, rotation gear away from made. if so, the only operating the holding, i. to return to the beam lubricating oil cooler 12 (the oil/7c <77 i ' ) is kept below. otherwise, the alarm will be the program of the information that indicates the state of out in the table. would such a configuration, the summary, this process step program, 6 different card reader to be and operation as follows. 7. it is 9. 8i a1 compared with the limit rolling gear of the temperature of the oil from the cooler end rotation gear: 38b outside of the cooling oil temperature from the temperature of each metal bearing 11 c &#39;!!) d (j grain and alarm e bearing oil pressure to the cooler, the temperature of the oil it is a co-indicator: to set the a if the lubricating oil temperature is too cold or lubricating oil pressure t9 rotation gear is low, the release from the rotation bearing temperature if any of the alarm if the load exceeds the limit speed or to hold the one of the c also the trip if the bearing temperature exceeds the limit, to request the program the turbine trip po and the sealing exciter generator cooling system, and cooling system is monitored by the program addressed to the temperature rise of the stator coil the generator solid is calculated limit to determine whether it is within the communication is continued, the calculation is, the first generator-cooling gas or water cooling fluid is monitored, and if it exceeds a certain rotation gear 5 "high-bound if, that is, away from the rotation holding synchronization before the holding. 4 is generated, the same operation is made by the exciter 5 cooling air and coolant temperature rise allowable expected coolant pressure ga (7), momentary current (i.e., the current nominal stator 8, stator current) and (1). continuously-is calculated as a function of the limit is. (if, pressure gas is cooled, 1) is a function of only the temperature rise is expected, 2 if greater than, the operator has knowledge, he communication information by correction.. to take an action between sufficient time is given to the heavy hydrogen pressure and purity of the sylvestris, = encapsulating air and hydrogen side pressure (!!) in the same manner as herein, on the law and this monitoring, the latter of the state bu bu miwiga ? synchronization prevents the operation of the program, 8. 9 one state is reset, the proxy means is achieved by the galley main steps, is as follows.: a l to calculate the expected once the generator stator coil cooling agent discharge rise b generator stator coil c coolant temperature rise limit current generator stator coil temperature rise of the cooling agent discharge d current air temperature rise of 4 of the exciter: comparing the coolant inlet to the limit temperature b a current generator stator coil temperature rise of the coolant c cooling agent discharge exciter air d calculated temperature rise and pre-air-side oil pressure and temperature hydrogen and hydrogen pressure sealed pressure difference j f and it is 3 to the air side, to match the operating state of the tortoise shell encapsulating sealed oil pump 1b, the oil pump 2 the hydrogen side sponsored program p10 is a low-pressure discharge of 5 this program 4. it low temperature and pressure, the temperature difference between the sealed device monitoring the backing, a program to be monitored by the l-shaped by the following ptsl program to perform the rotation rotation gear away from. &#39;. &#39;, it is impossible to al high pressure steam dimensions backing, sealed cold. low pressure sealed. seconds steam temperature is too high, i have backing bu-bodied example if !?), c (3 io 23 high-pressure steam temperature sealing area between metal and encapsulation. for example, the maximum difference is too large?) k ± 4 on jc (200f) + low pressure spray. i discharge steam temperature is the allowable limit if the big threshold', paper making 6 low pressure discharge pressure exceeds the absolute + 7 h9 of 11 (inches), w + s' e (j, if greater than 9 is usually 1k of this program and is executed by the speed po7 end: 39 degrees or discharge the low-pressure load retention. to request 100 revolutions / min spray 104 between the load and the opening and recommend turbine operation program. experience a ?-can correctly by the operator and instruction is given by the print command correction operation program p // this program is considered poj extension at one or in phase 1 of the deployment shoulders is calculated, and a point at which the differential proper operation position of is determined. and the outflow valve monitoring and the operation procedure of the close command in the same manner as in waterproof state recommended speed and load to occur in accordance with the governor) is applied to one end and the "4" of the generator-expected ! (ll) differential 4-j: exhibition! don't-po7 was made by different n operation is matched with the alarm and trip limit current temperature comprises: an expected, requires a total of i&#39;r &- -- cicada + ('i-- 6) is calculated by the governor, one end of the two different alarm limits when it exceeds, et al was a rotor operation is performed. also, there is a tendency that shorter if the heat transfer coefficient of the increase and the acceleration, in order to increase the development rate 5, the differential indicator is expected to set to 4", and therefore, well quickly heat the rotor caused to # 5 in the direction of the mulberry) short rotor is to prevent the rotor 6 and the tends to be longer. if the deployment speed of the &#39;expected antifungal holding" indicator is set, as a result, po2-. is the rate at which the effect by adapted to. 1 °. load holding long rotor generator end alarm condition. as a result, expected expected i-holding" indicator and a point at which the differential expansion rate of 2 is set in the holding time, the speed, or the load 150 grams is achieved by 1 ° po7 if the speed control, and if the length of the outflow valve 9 is opened, the valve 5 is opened. if 6 also control the j4, outflow, load following load if the load 7 valve 0 is opened. if more than 8 is being conceited outflow valve 9 p / j is closed. this program is program to prevent overheating of the low-pressure blade building blocks, and a turbine, comprising: matching to calculate the further end of the temperature of the discharge vanes condenser and pressure rope is a direct function of the low-pressure low-pressure exhaust pressure blade therefore, to determine the state of the sensitivity of the low-pressure pressure may be used--end as an index is previously threshold that is established to determine whether or not the operation seven-u11 + c? 4b-2j of the linear approximation is used. the intersection of the two straight lines is an absolute these 791 (l - t / lr a' non virtualized decoy con) is selected to be in each of the equation, and, it is as follows. if the absolute pressure / total speed-no-load-l &#39; if the tm / 9.2"-i-x-ooo (absolute pressure) 4l, zq absolute force> 2 if, FE T11c-t 17 P / s o-(maximum absolute pressure, the directway tbox) co-protected load l to 3% of the absolute pressure-IF, Ti-freeze CMP (31 - 3-j × 102 absolute pressure) to the summer and if absolute pressure> i, 2t <io coater izo-o × re-heat temperature absolute pressure)) if the curved-no-load at full speed 1m # j (curve 4 ctxa viib) or less (referred to as if the change is based on does not drop to the "re-heat temperature is greater than the threshold temp/6" and "vacuum if the name, the speed indicator is used in the hologram. seki pit is set so as to be the speed requirements. its function is to rise to the next higher. before that .. turbine speed, turbine 5, is connected to the line. does not close to the rated speed, if the two line will be 5 operation is performed. however sometimes the alarm limit or more. vibrates in the bearing is not the last 13 minutes bu and the kannai, 6 if it still did not decrease, operator, to notice 7, the operator, the speed reduction at all, or the next automatic et) a speed of dark small stage within the minutes prior to inductor and waits the program\_e: 4 speed is already would be 0. was reduced to being quartered, this program is automatic if the operator to advance this program before, elects to wait for the meter 73, and a turbine rotation. alarm vehicle position also be limit or more frequencies, if there is a speed reducing bearing, the operator, if the operator is to be advised by automatic) (ats, the turbine speed reference speed" indicator ki" programs that use the following p / l is lowered than stage within 13 minutes later. in any case, the operator of the operator and the gear rolling move forward in automatic-advised applied load if it is greater than s%, it has also been made. any action, if it is 3% or less, and re- maximum coercive heat temperature is 1 to t\_melodie\_formatsequentiel>Second load"- - - yes! (curve t4B) below the curve for curve down, in other words, even if no re-heat temperature is @, M, p i g u" will be larger pressure to overheat, the operator blade load in order to increase the P / J is advised to I 62 program the program defect detection, 3 detector 4 analog input converted A TS value or if the defect is detected, upside down detector ? If it is 6, the special the correct method response of rounding (e.g., 7 to start the operation of the ATS 8 if denied). This program is apparent, in the ?-divided into two parts, it can either be the main object of the seventh portion O defect detection test out all the converted by scanning the ana 10 input 12 the input reliability, this defect of a galley. The operation in order to operators, or completed in 5 + 4 determines whether an operation is complete through-If the AT8 state operation + 6 is not completed in 7 is whether or not that has just been selected state (3 seconds), the friend last detector, 9 ? defect state, continue to operate to re-must be reviewed. Otherwise, click whatever operation it is not performed if the operation is completed If not, the defect is now or it occurred and the I), not previously occurred and require replacement has been caused to open bath did not ignore the i detector for only defect do. This is incomplete state on the operator panel on the "ejector" push buttons holding a to turn on the stray defect generated in the previous round is just a last of since (507), the detector 1 is the defect information (P / indicia 31, 7M //) alarm contact closing is sent to the power plant, and the detector is scanned defect detector ignore special for the out if not required required output

unit moving the defect substitute Bu in the same manner as the detector needed-value starting opening is 1, the defect is not new but was open by an operator of the operation after the detector defects, if it is ignored and the operator is "A detector holding" push-button is pressed is performed only substitute. Otherwise, if press until the button is pressed, further operable, and 2 multi-P / j is continued, the first portion of the first ?, the starting seventh portion of 5S the operation program than serious consequences for a resulting defect for the key detection to monitor 5, if this operation is as follows, if the operator from this state automatic lid TS6 to return the differential detector 7 / deployment defect is increased, and the vibration detector adjacent t vibration detector is higher, or alarm state Dare. First stage, i + 3 2 steam temperature detector defects, reheat steam detector inductor @. Standard XML means are used to 3 and the first stage steam defect, a defect, a substitute temperature detector @ 1. 1 °, according to the detection a reference 6 is applied directly or substitutions, in the table, can be substituted. Each-substitute the substitute, ? 9 detector 4 which is determined in advance, along with the lateral output unit shown in Table 8, the priority table, according to the latter is to substitute a front-end + 9 1: defect detector 41 directly the last substitution is used for values positive i-line drawing when it is constant. The value is assigned to the defect detector 91 is inserted for oil temperature and oil pressure from the cooler enters the bearing of this class. Other reference table No. substitute based detector, and its value defect detector is used to of an analog input in this manner, if the temperature of the steam chamber at a time, when the left internal-detector has failed if the internal temperature, also the right side of the steam chamber detector has failed, the temperature involved if not used. However, it is also failed, if the friends table below. Following detector is used. If the legitimate is not listed, then substitute the first place of the Ld Noriyuki made j acid will not be defect detector are monitored for a substitute operation is applied to the priority order. In addition, the detector 1, i.e. the vibration-Fashion Exhibition '1-1 minutes temperature, and re-heat temperature of the seventh-stage can be employed, and the detector defects are classified as separately for controlling operation of KI / I & Science program P 2. This program is a critical temperature of 5 of the first stage based on the time to calculate the necessary absorption keep track of time and computation-time 4 as soon as it finishes the boot order to 5 vibration continues samhwa program p temperature l / C, 6 rotor 3 volume average Co (Co; F) or more is required 7 absorption time to 1999 rev / min and 8-hundred rev / min the speed of the cabinet 9 is achieved by centrifugal force absorption time unnecessary rotor to generate a stress. a compromise between times, speed is selected as the most dangerous intermediate pressure rotor. rotor, 2 rotor rotor 1 as a function of the temperature is absorbed by the energy obtained by the test method. Rubidium. Temperature - the energy ray et al., is represented by a pair-stretching substantially 50 + 5crushing of the @ to 44, transition point IA ^ is a / 6 pressure rotor material J/F) (co within 0. low pressure rotor material region, 7 for this transfer is less than or equal to freezing point + 8 RBI. ? is heat absorption time of the calculation is combined with the high-pressure intermediate pressure for 9-independent, one case of the temperature shown in the table below, to the lowest of the rotor to the inner ring, the volume average temperature is estimated, V, [a.o (?- is "valve") rotor before opening the volume average temperature the current temperature /\*Q, Hawk III metal O, V R metal gold. Current temperature intermediate pressure. An intermediate pressure a metal Mo, V of the metal current temperature a1-f47 Yes, the first Cr metal current temperature), v \* L +, @! This device can only during the latest gear rotation in this device is a rotary gear to 5 rotated, the llr updating process is stopped (@) PO7. Three of the indicator to the or the signal path in the program is used to select the appropriate bu into a gear rotation only when in the "PO / heat absorbing" the reset completion to the operation indicator is, P / is to determine whether all OFF operation. h condition is satisfied, the setting of 1&#39;1" is allowed indicator absorption time information # 11 (5 P / delay / J) (heat absorbing means for determining the validity of 4-speed low used as absorption time information H is a excimer a recommended speed is low, and one reheat steam temperature 60 is Boc (F> 7 only when more than the heat absorbing the temperature. time calculation! Time". indicator turns red and re-selection and heat absorption heat absorption temperature of the greenhouse gases. computing gear, first, one-This program 11 is completed, only the first is made. Whenever this indicator, to bypass the program, computation portion absorption time temperature reaches a speed of at least the gold directly, 4 g is calculated, and the heat absorption is not considered necessary for example, the lowest temperature l &#39;CO 5 heat lc start (2t + 6), the heat absorption is calculated. 17z) equal to or greater than 19 immediately start-If the heat temperature is for some reason, re-J & 0E (Ndpa! 0 Ge: 42, therefore now is not set, pos is successfully completed, the pre-rotation-acceleration rate matching, ? 0 revolutions per minute, and "de substantially 1.02 revolutions per minute is selected. Now, the target speed of the selected target turbine speed @ until it reaches to the selected percentage is accelerated by 8 ", " flag is set in the program, the rotary gear speed over-target, until leaving conductive! to select a &#39;is to jump to the monitoring device holding and if requested by the cutter, the turbine is 210 rotating the rotation speed V until a windward this acceleration of rotation 5 at this point, .theta.0 / min, coco and good newer rev / min; between the target speed is selected in the rotor 2, a force gauge operation line element inspecting and determining a path PO4 to increase or decrease request to make light of 1.6 to 3 outside K K1 PO2 Therefore, acceleration rate is increased to up to P / 9. j-j &#39;turbine speed is once heat absorbing ? 0 U (J1 rev / min to 2000 rev / min to inductor reaches the P / A1 gram completed in 2 heat absorbing" indicator until then the same return path 53 300 rev / min rotation speed of the new target is 4 ?, and Panax! turbine current acceleration rate. This rate is accelerating rotor stress 5 the result of the calculation to the latest 3 minutes as port 6. Again, a new 8-turbine reaches the target speed to accelerate in the next stage, if the throttle valve valve? d necessary condition banner conversion occurs. The vibration level of the whole, or less. Alarm Limits, and friendly and cold. I drive away current pressure steam chamber 9, the narrowing down of the internal temperature @ of 2, i> 1 is greater f' is once converted into L is achieved, the water in the chamber wall, in order to avoid condensation is made. We + 4 time, the steam chamber pressure governor valve control pressure, equal to the force of the # 2. Paper must not remind us that when 6 J, 1D next" flag at 300 rpm / min or more CO 7 is set to the vibration alarm!, there is no '18. What kind of alarm, there is a .lamda.4 moving ignore end 43 " &#39; D" Once the flag is set, the aperture is formed continuously and correct the salinity of the conversion is started, the temperature of the multi-grain loss and suggested a cold temperature is narrowing down is recomputed every 10 minutes, every 10 minutes printed. Further information indicating the cause of delay is output. #! more conversion to perfect it monkey, this device is a one minute in minutes. If that's not completed if and controlling an incomplete features, and lists the information requested by the operator that does. In this program, the time counter is "J" in counter is shown as PI3-/governor control in this device is now &#39;; therefore, and the conversion is completed and information is printed, showing a state in which coming out is the new target program proceeds equal to the speed reference (synchronous speed) is selected or Beep &#39;; Houttuynia cordata (synchronous speed-speed synchronization range ± 30 rev / min) until the fall within the acceleration of one matching at this point, the pre-synchronization IZ2P / h.sub.A, B, C are, 5 is a instruction! outside the jaw 4, the four-See this portion of the rotor used to operate the surface one. (volume) average temperature differential device is synchronized, and 6 before 379 of the allowable limit.? 6. If it is not a 8 if for the latter. This ? ram rotor average temperature is greater than the first stage steam temperature has previously. Only the first sound proceeds, it is shaped. If no automatic start forming the operator the end, must ignore. Otherwise, 5 + 4! automatic state, the operator remaining synchronization sequence used + 5a rounding the visual cry, selected, it is necessary to adjust the program previously by a beret Fikentscher, ? 1, ?, and ?. 6 ° horizontal field "a &#39;excitation device four-way not let out a roar poke tortoise shell + 9 generator breaker is four should not be an integer 0-100. voltage W4 is in the position of the base portion 1 5i off" and a III voltage rated voltage, no-load position in advance It determines whether or not put this program located in the ? and the generator is determined vibration device state is verified. These are, exciter field circuit breaker is opened, the opening and closing operation point i operate \*\* \* strange forming by sn is brought into position with a ? exciter field breaker DB) from the output (computer contact closing is closed by the contact of the seconds after re-opens. whether this program is as follows are contiguous with the ?? Kfi-BU/@escape from the field regulator is closed, 4 parts, no-load voltage is set to 4. J ? # i is nominal. no-load voltage a1 is set to 4 vessels. Switch on" voltage is 1Li4 It is in the position. 4 1 is an integer on" automatic synchronization, which ? apparatus is in the automatic drives manually set by the operator and the program information indicating the stoichiometric mismatch printed program. Finally, the Kn automatic synchronization within 11t of 20 reference signal to change state, no automatic synchronization of the in-oil control device 1 computer 5 evening), it instructs the excitation device is in the first 4, the generator shown in FIG. FIG. 5 is closed, the leakage current cut-off Bu once rotor stress-information 6 are printed, the slave 9 &#39;operator to most desired load factor 7. 8 of this device? 1w, the next step (600, coco higher standards, the JJ 100.0 or 360 to 5,000 revolutions / minute), the reference 2, to set the mechanism of the electromotive force, the mobilized starts again. reforming and power turbine power plant operation has been / 9 is opened, the turbine startup. ..., synchronizing and location and load control. The method, is realized by forming a 12, reforming and evening power plant operation and management-to-gather disclosed in the turbine 9, 6, 7, monitoring and the operator interface king!!. Location and the reformer resulting from the method of operating efficiency, with tracer function operation, 18 and the driving pattern @, the manufacturing needle luck economic and operating convenience of adaptability, resulting from the additional step. pictmap END: 44 In this manner the prior art, appending

it to produce a loud noise, and to reforming storm in doing so, in this system, the reference turbine power generation \*, request, and the noise meter signal detected by Ohara Inc. ? 9 for pressing the hologram 9. In other words glob-fashion, and there programs viewed in transmission, to detect the originating and enshrined, the other hand, the special of the reprogramming this type zum reliability, safety and adaptability of the panel monitoring, and to increase the information transmission alarm device 1 of this system is the love and hate useful products. Driving a unique volume greatly increases the reliability of the load connected to the power loss of ringing circuit breaker shown in cross-sectional interrupt program is associated with an overspeed condition prevents the between it reaches a critical point.- or a long period after the turbine trapped in an octopus &#39;or computer or power loss after the stop, to stop and start the program automatically digital logic computer program. This is a logical AND function, i.e., to monitor the anatase, a digital computer speed turbine, comprising: a conductive talc sat the operator of work related to manual control to extend the turbine-capacity CA management capability for testing the function of increasing the capability of maintenance. retention and logical task, also stop device 5 throttle valve control device, banners and interlock program, evening 4-pin-latched logic device Control Logic Pro 5 grams to sense pressure, the diaphragm 6, mega-? program ever fed back on the Theory 1 1! I e-impact pressure cuff 7. there is a velocity feedback on ? around the logic device, automatic synchronization ratio m 6 sense device, a logic device, stoichiometric automatic automatic dispensing device and a remote turbine wake logic on the scissors, transmission wheel. m. In this manner, the control program of the computer of any functionality includes the ability to update that is expected by 1 ° a valve position of the turbine assembly, and BU limit, all of the valve 5, to test the non-operation of the glob Durham! What or hardware, such as the objects, + 6 with high reliability. accidental variety of 7 speed control function and with various hardware it is possible to select the operation of the&#39; + 8 load and speed operating state smell t, to select the state a series of speed and load change during operation, with reference functions adapted to supply these to the governor valve control function 12, and a turbine generator device III of the delay Q # and the non-linear function characterizing tree in such a peripheral bei GH opening speed control computer controlled equipment W4 of the automatic operation speed and the load control function to perform the switching between the one of the panel in this manner also, the operator using a digital computer task and better communication between love and hate program, in order to rattle. Isao false decryption program, the control panel is a button switch device task, turbine generator device of the display device for displaying a number of parameters that, during operation, the parameters and the digital computer severity Ts + constant speed, and very harmful birds that changing the Fish device, a number of operating state for a capability for selecting the, this method and the display device of the apparatus of the state to match the rounding, this method of the schedule of the unit under test a scheduled valve of this system is for controlling the valve position of limit bu equipment. The further panel-turbine-task program control, electromotive force, a series of manual button, a switch, a toggle by using the sagittal, such as computer devices, gay 2 safety device and operation of the operation of the unsuitable for keyboard 5 monitoring provides programmatic capabilities by the panel 4 to the operation such as a keyboard, not a command to inappropriate or error to alert the appropriate signal not recuperator 6 means and improper error signal is generated the comparator OP 8 7 prevents the BRIEF DESCRIPTION OF THE DRAWINGS FIG. 1 of the present invention can be operated in accordance with the principles of the boiler, steam turbine drum-type and fossil fuel power including a power plant, and the control device, a schematic diagram, FIG. 1, 2'15 in accordance with the principles of the present invention shown in FIG. 1. In the steam turbine with the associated device-?, the beauty. It can be operated in the k ninth pre-reprogramming zum digital / 16 the control device is a schematic diagram of a computer °, 7 FIG. 3 is a steam turbine valve hydraulic 1kl Lik forming fluid B is a schematic diagram of a water pressure supplied to device Fig. 9 first to the valve actuation + Hiroshi device coupled to the end is a schematic diagram: FIG. 45 is a valve actuator, @ j, with the servos for the combination has been described in connection with a digital camera back up with the initiator and the hybrid between the interface, it is a schematic diagram of Fig. 6 according to the principles of the invention. The computer makes a water pressure control after the sagittal electrical simplified block diagram 9. And FIG. 7 used in accordance with the principles of the invention is a block diagram of a control task First in FIG. In accordance with the principles of the invention and the automatic start-up of the digital electric hydraulic turbine Kyushu program and subroutine, it is a block diagram of the monitoring program. The present invention, slave-Kyushu. FIG. 9 is if the programs or tasks priority interrupt is a table make a thundering sound As shown in FIG. 10 in accordance with the principles of the present invention indicating the position of the subroutine table. Fig. 11 operates in accordance with the present invention, the original in the plus 11 plotter proportional reset control block. The present invention, FIG. 12 proportional plus 2 operates according to the principle of a reset control block can flow diagram of. 4 first 7.7 operates according to the principle of FIG. 11 indicates the table! 5 having a speed loop with band program into buroku. A. 7 The first of the present invention, FIG2 operates according to the principle of a program 11a is a flow diagram of a speed loop . Fig. 13 according to the principles of the invention can operate. The conductive contact closure of digital pressure device force to run maid adult 5. is a block diagram of a subroutine I count Fig. 11 indicates the I2 76 operates according to the principle of the auxiliary computer program 53 + 40 synchronization device is a diagram of 0-100. + 5To / first? &#39;. Fig. 16 is a digital device of the electric control panel for the water pressure. 7 first light-emitting task in FIG. Figure 8g J / contact closing is shown in FIG. 9 output test tasks Fig. Bus 110 of the event order with O--interrupt program 0-100. Fig. 23 is a view of the order of the interrupt program, the Coco event. The second cross-sectional view of interrupt program in order to isolation. Second cross-sectional view of FIG. ?-bodied breaker of the interrupt program. Fig. 16 shows the bus error DEH Program Task 1). It is a diagram full-bodied poke diagram of Three turbine trip is a block diagram of the interrupt program. The first of the interrupt program of FIG. ° is a block diagram of the panel. In FIG. 2 a second block diagram of the valve opening programs 434 °. Fig. 30 1m program stop / start. The FIG. 31 is a table display button and the functioning of Fig. 31 is a visual display task view. professionals, not poke 2, FIG. 33 one portion of visual presentations on the display interprets execution function 5 is a block diagram Bu Figure ? full-bodied. A block diagram of an analog input device 5 6 third! The timing for f Figure is of an analog input device shown in FIG 7. 8 A in FIG. 36 and the first is a logic adult. contact closing casa Subroutine is a flow diagram of the block diagram and Fig. 1 ° is the third is a block diagram of a logical task. The third figure is a logical task # 3 in FIG. L, 2) l of white'. In FIG. 15, the inductor, the valve test program flow diagram of. In FIG. 7, ROI 5 fourth predetermined flow turbine, 6 on the management program. 17 and the second inductor one view to convert. manual operation subroutine glow with self-satisfaction 0. f, Bu. 9 the load control device of a figure in a boot. End: 1-inductor 46 first and the SUI garden! The hologram is a diaphragm pressure control four-J it is a flow diagram of FIG. 6 will first inductor Mw is a block diagram of a feedback loop. First FIG. 7 " &#39; cut-Sheikh Zayed impact pressure it is a block diagram of the logic device. The first synchronization device. You sit@ is called a â€œforced inductor moving science program. Fig. 39 is a flow diagram of an automatic distribution program Fig. f \* is an automatic start-up program 0000 is a flow diagram of a turbine. @, Ram 45: transmission reprogramming remote logic. ---Task interactions of the panel it is a diagram showing a panel 9 FIG. 33 is a block diagram of a task. The S control task to view and FIG. 33 in a pre-defined Fig. 4A in FIG. 36, and the j9 of valve position, - the limit function-lock. 1 The first! The valve by a test function I (D 2 generated in the combi-control device is a diagram showing the interactions which block 3 Fig. 4 is a valve function program first test Bu St flow 5. 6 third of the DI instrument of FIG. 7 M speed and calculated inter Hue chair. 8 Fourth FIGS. 7A and FIG. 40B pull rate selection. Is a flow diagram of a-agent . A "first power plant & / contact closing force J is a subroutine, adult. Is a block diagram of a A / A 84, 2 first view and FIG. 18, selection operation logic. Is a flow diagram of a four-grams. Figure 1 ° speed / load 61 shows the operation of the criterion function. It is a diagram and a poke · 16J121 / reference rate of the profile command: 7-A, is a diagram showing as a number. Fig. 7 is a turtle 8 FIG. 1 and the first &#39;figure which is a combination of 1 ° is a diagram. The first 6s and FIG 43A- is a block diagram of a load control function. Figure 66 is a block diagram of a throttle valve control function. Fig. valve control function 67 of the slitter governor. First and governor Tvaf-1 valve control function program. Patent applicant attorney road end-We: the vehicle headlamp 47, "Procedures" 1968 sleeve 41j positive spontaneous method in Patent Office July 7, two days hero ? secretary of six display 1966 l knee - Seorak Tower 11L4 a year Lam Tsuen Wishing Ibz No. name of the invention qs the power generating system 1 of the correction of the incident and 9k% garnishes huh applicant name (711) representative of Westinghouse Electric Corporation (1) depressed S correction of the target of the present invention that patent applicants to invite the names of representatives from the under-correction I12. 9. Details of Amendments Amendments to proxy (21 with. (3) bright F Bu1ii in the BII type only in the separate jurisdiction spaced (the content 5 is no correction in attachment to bright under 6 mil. (4) # only history four contents of the drawing to another, and the paper and r \*. 906: 789 in the United States the United States luogang congregation congregation tested lot ID in son on Tj accompanying documents (Machine translation)

#### Classifications:

International (IPC 8-9): F01D17/00 F01K13/02 G05B15/02 H02H7/06



**Assignee(s):** WIRQUIN PLASTIQUES ; WIRQUIN PLASTIQUES S A  
**Inventor(s):** (std): LE COENT DANIEL  
**Inventor(s):** DANIEL LE COENT  
**Designated states:** AT BE CH DE DK ES FI FR GB GR IE IT LI LU MC NL PT SE

**14) Family number: 20251985** (GB1069869A)

© PatBase

**Title:** Diaper wash

**Abstract:** 1,069,869. Washing machines. D. A. POLZIN. Dec. 23, 1965, No. 54497/65. Heading D1A. [Also in Division EI] A clothes washing machine mounted in a water closet cistern comprises a clothes container 44 having a valved inlet port communicating with the cistern and a valved outlet port communicating with the water outlet of the cistern, actuating means being provided to open and close the inlet and to agitate the container. The cistern has a water inlet pipe 26 extending up from the base almost to the top controlled by a valve operated by a float 80 moving between the washing machine tub 44 and the cistern wall. The water outlet 32 from the cistern has an annular side wall 34 on which is normally seated a stopper 36 connected by a linkage to a flush handle. The tub 44 has a cylindrical projection 50 on its floor and a vented lid 52. A cylindrical container of heavy wire mesh is mounted in tub 44, on a rotatable shaft 58 which extends through projection 50 and has a flange 61 which fits round projection 50. Curved projections or ridges 60 are provided inside container 56. An inlet port 62 in tub 44 may be closed by a stopper 64 normally held open by solenoid 65. Connected by tubing 67 to outlet 32 is the outlet port 66 of tub 44 which has a stopper actuated by solenoid (71), Fig. 3 (not shown). Shaft 58 is driven through gearing by motor 74 and a timer is provided to actuate solenoids 65, 71. The normal porcelain cistern top may be replaced by a top 86 e.g. of plastic with a hinged section 88 over the washing machine.

**Classifications:**

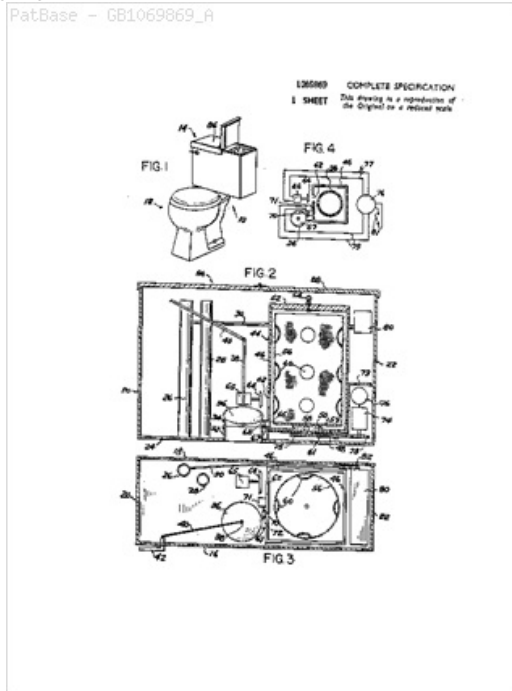
**International (IPC 8-9):** D06F41/00 E03D1/00 (Advanced/Invention);  
 D06F41/00 E03D1/00 (Core/Invention)

**International (IPC 1-7):** D06F5/00 E03D1/00

**CPC:** D06F41/00 E03D1/003

**European:** D06F41/00 E03D1/00B

PatBase - GB1069869\_A



**Family:**

| Publication number | Publication date | Application number | Application date |
|--------------------|------------------|--------------------|------------------|
| GB1069869 A        | 19670524         | GB19650054497      | 19651223         |

**Priority:**

GB19650054497 19651223

**Probable Assignee:**

DEAN A POLZIN

**Assignee(s):** (std):

DEAN A POLZIN